

## Rim4 Rabbit pAb

CatalogNo: YT4143

### Key Features

#### Host Species

- Rabbit

#### Reactivity

- Human, Mouse, Rat

#### Applications

- WB, IHC, IF, ELISA

#### MW

- 30kD (Observed)

#### Isotype

- IgG

### Storage

**Storage\*** -15°C to -25°C/1 year (Do not lower than -25°C)

**Formulation** Liquid in PBS containing 50% glycerol, 0.5% BSA and 0.02% sodium azide.

### Recommended Dilution Ratios

**WB 1:500-1:2000**

**IHC 1:100-1:300**

**ELISA 1:20000**

**IF 1:50-200**

### Basic Information

**Clonality** Polyclonal

### Immunogen Information

**Immunogen** The antiserum was produced against synthesized peptide derived from human RIMS4. AA range:33-82

**Specificity** Rim4 Polyclonal Antibody detects endogenous levels of Rim4 protein.

### Target Information

**Gene name** RIMS4

**Protein Name** Regulating synaptic membrane exocytosis protein 4

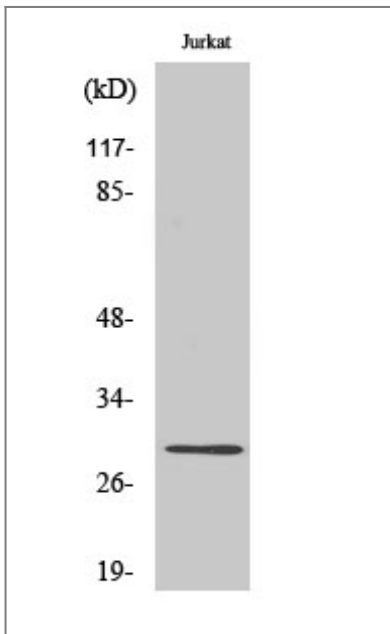
| Organism | Gene ID                  | UniProt ID               |
|----------|--------------------------|--------------------------|
| Human    | <a href="#">140730</a> ; | <a href="#">Q9H426</a> ; |
| Mouse    | <a href="#">241770</a> ; | <a href="#">P60191</a> ; |
| Rat      | <a href="#">266976</a> ; | <a href="#">Q8CIX1</a> ; |

**Cellular Localization** Cell junction, synapse .

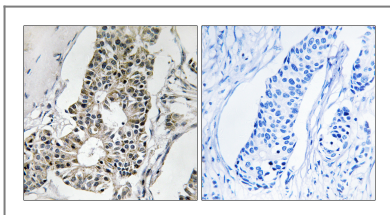
**Tissue specificity** PCR rescued clones,

**Function** Caution:Does not bind Rab-3.,Function:Regulates synaptic membrane exocytosis.,PTM:Phosphorylated upon DNA damage, probably by ATM or ATR.,similarity:Contains 1 C2 domain.,subunit:Binds PPFIA3.,

## Validation Data



Western Blot analysis of various cells using Rim4 Polyclonal Antibody diluted at 1:500



Immunohistochemistry analysis of paraffin-embedded human breast carcinoma tissue, using RIMS4 Antibody. The picture on the right is blocked with the synthesized peptide.

## Contact information

Orders: order@immunoway.com  
Support: tech@immunoway.com  
Telephone: 877-594-3616 (Toll Free), 408-747-0185  
Website: http://www.immunoway.com  
Address: 2200 Ringwood Ave San Jose, CA 95131 USA



Please scan the QR code  
to access additional  
product information:  
**Rim4 Rabbit pAb**

---

For Research Use Only. Not for Use in Diagnostic Procedures.

[Antibody](#) | [ELISA Kits](#) | [Protein](#) | [Reagents](#)