

Ribosomal Protein S4Y1 Rabbit pAb

CatalogNo: YT4136

Key Features

Host Species

- Rabbit

Reactivity

- Human

Applications

- WB,IHC,IF,ELISA

MW

- 29kD (Observed)

Isotype

- IgG

Storage

Storage* -15°C to -25°C/1 year(Do not lower than -25°C)

Formulation Liquid in PBS containing 50% glycerol, 0.5% BSA and 0.02% sodium azide.

Recommended Dilution Ratios

WB 1:500-1:2000

IHC 1:100-1:300

IF 1:200-1:1000

ELISA 1:20000

Not yet tested in other applications.

Basic Information

Clonality Polyclonal

Immunogen Information

Immunogen The antiserum was produced against synthesized peptide derived from human RPS4Y1. AA range:214-263

Specificity Ribosomal Protein S4Y1 Polyclonal Antibody detects endogenous levels of Ribosomal Protein S4Y1 protein.

| Target Information

Gene name RPS4Y1

Protein Name 40S ribosomal protein S4 Y isoform 1

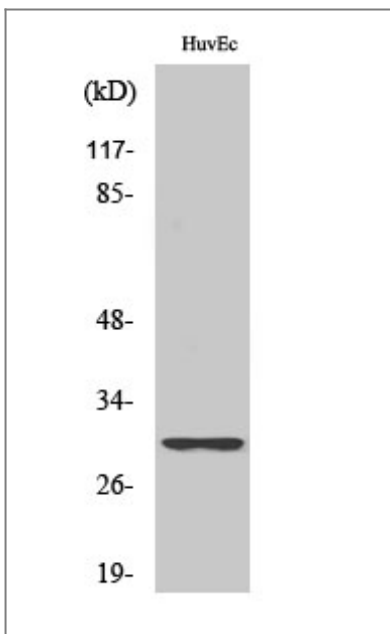
Organism	Gene ID	UniProt ID
Human	6192 ;	P22090 ;

Cellular Localization nucleus,nucleoplasm,cytosol,ribosome,polysome,membrane,cytosolic small ribosomal subunit,

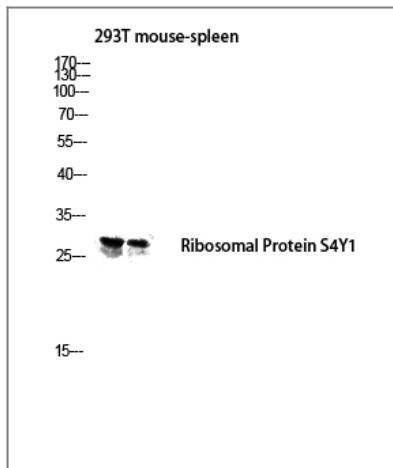
Tissue specificity Coronary artery,Fetal liver,PCR rescued clones,Placenta,

Function miscellaneous:This isoform is encoded on the Y chromosome.,similarity:Belongs to the ribosomal protein S4e family.,similarity:Contains 1 S4 RNA-binding domain.,

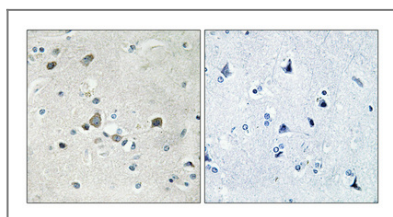
| Validation Data



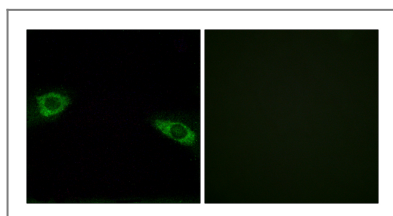
Western Blot analysis of various cells using Ribosomal Protein S4Y1 Polyclonal Antibody diluted at 1:1000



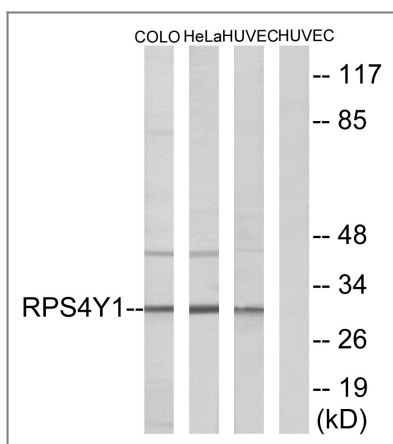
Western blot analysis of 293T mouse-spleen lysis using Ribosomal Protein S4Y1 antibody. Antibody was diluted at 1:1000



Immunohistochemical analysis of paraffin-embedded Human brain. Antibody was diluted at 1:100(4° overnight). High-pressure and temperature Tris-EDTA,pH8.0 was used for antigen retrieval. Negative contrl (right) obtained from antibody was pre-absorbed by immunogen peptide.



Immunofluorescence analysis of HUVEC cells, using RPS4Y1 Antibody. The picture on the right is blocked with the synthesized peptide.



Western blot analysis of lysates from HUVEC, HeLa, and COLO cells, using RPS4Y1 Antibody. The lane on the right is blocked with the synthesized peptide.

Contact information

Orders: order@immunoway.com
 Support: tech@immunoway.com
 Telephone: 877-594-3616 (Toll Free), 408-747-0185
 Website: <http://www.immunoway.com>
 Address: 2200 Ringwood Ave San Jose, CA 95131 USA



Please scan the QR code to access additional product information:
Ribosomal Protein S4Y1 Rabbit pAb

