

Ribosomal Protein S4X Rabbit pAb

CatalogNo: YT4135

Orthogonal Validated 

Key Features

Host Species

- Rabbit

Reactivity

- Human, Mouse, Rat, Cat

Applications

- WB, IF, ELISA, IHC

MW

- 30kD (Observed)

Isotype

- IgG

Recommended Dilution Ratios

WB 1:500-2000**IHC 1:50-300****IF 1:200-1:1000****ELISA 1:2000-20000**

Storage

Storage* -15°C to -25°C/1 year(Do not lower than -25°C)**Formulation** Liquid in PBS containing 50% glycerol, 0.5% BSA and 0.02% sodium azide.

Basic Information

Clonality Polyclonal

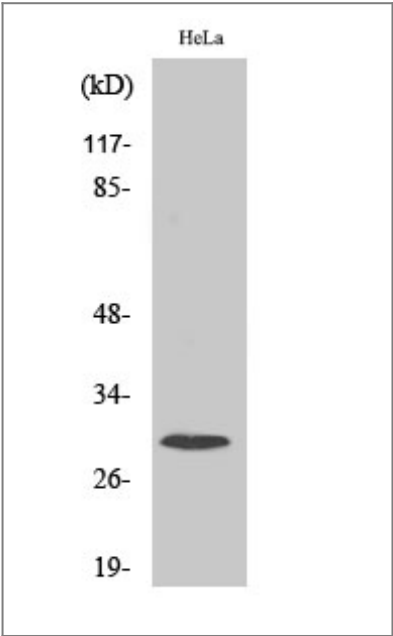
Immunogen Information

Immunogen The antiserum was produced against synthesized peptide derived from human RPS4X. AA range:81-130**Specificity** Ribosomal Protein S4X Polyclonal Antibody detects endogenous levels of Ribosomal Protein S4X protein.

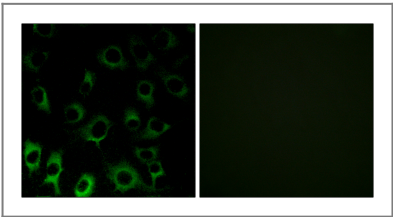
| Target Information

Gene name	RPS4X		
Protein Name	40S ribosomal protein S4 X isoform		
	Organism	Gene ID	UniProt ID
	Human	6191 ;	P62701 ;
	Mouse	20102 ;	P62702 ;
	Rat	100362640 ;	P62703 ;
Cellular Localization	Cytoplasm . Localized in cytoplasmic mRNP granules containing untranslated mRNAs.		
Tissue specificity	Adipose tissue,Brain,Cerebellum,Eye,Muscle,Placenta,Thymus,		
Function	miscellaneous:This isoform is encoded on the X chromosome.,similarity:Belongs to the ribosomal protein S4e family.,similarity:Contains 1 S4 RNA-binding domain.,		

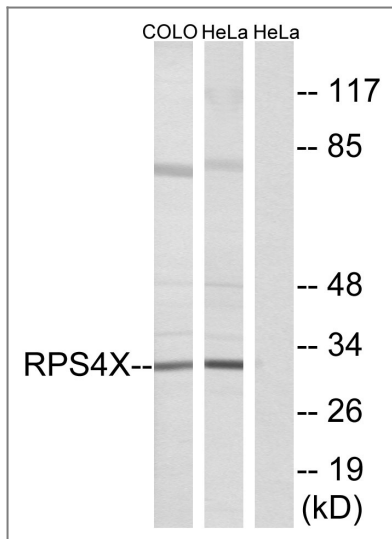
| Validation Data



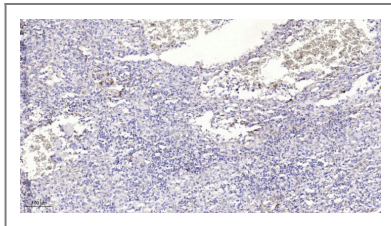
Western Blot analysis of various cells using Ribosomal Protein S4X Polyclonal Antibody diluted at 1:1000



Immunofluorescence analysis of HUVEC cells, using RPS4X Antibody. The picture on the right is blocked with the synthesized peptide.



Western blot analysis of lysates from HeLa and COLO cells, using RPS4X Antibody. The lane on the right is blocked with the synthesized peptide.



Immunohistochemical analysis of paraffin-embedded human spleen. 1, Antibody was diluted at 1:200(4° overnight). 2, Tris-EDTA,pH9.0 was used for antigen retrieval. 3,Secondary antibody was diluted at 1:200(room temperature, 45min).

Contact information

Orders: order@immunoway.com
 Support: tech@immunoway.com
 Telephone: 877-594-3616 (Toll Free), 408-747-0185
 Website: <http://www.immunoway.com>
 Address: 2200 Ringwood Ave San Jose, CA 95131 USA



Please scan the QR code to access additional product information:
Ribosomal Protein S4X Rabbit pAb

For Research Use Only. Not for Use in Diagnostic Procedures.

[Antibody](#) | [ELISA Kits](#) | [Protein](#) | [Reagents](#)