

Ribosomal Protein S27L Rabbit pAb

CatalogNo: YT4133

Key Features

Host Species

- Rabbit

Reactivity

- Human, Mouse

Applications

- WB, IHC, IF, ELISA

MW

- 18kD (Observed)

Isotype

- IgG

Recommended Dilution Ratios

WB 1:500-1:2000

IHC 1:100-1:300

ELISA 1:10000

IF 1:50-200

Storage

Storage*

-15°C to -25°C/1 year (Do not lower than -25°C)

Formulation

Liquid in PBS containing 50% glycerol, 0.5% BSA and 0.02% sodium azide.

Basic Information

Clonality

Polyclonal

Immunogen Information

Immunogen

The antiserum was produced against synthesized peptide derived from human RPS27L. AA range: 1-50

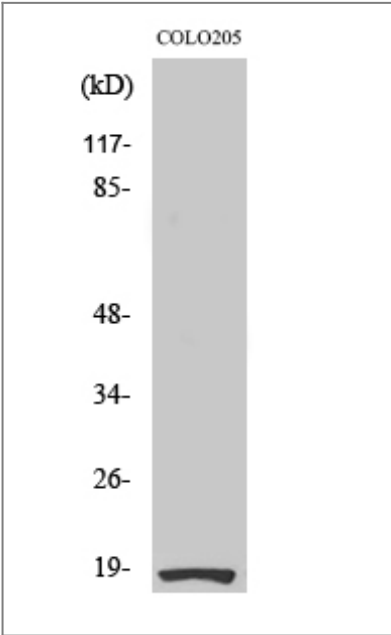
Specificity

Ribosomal Protein S27L Polyclonal Antibody detects endogenous levels of Ribosomal Protein S27L protein.

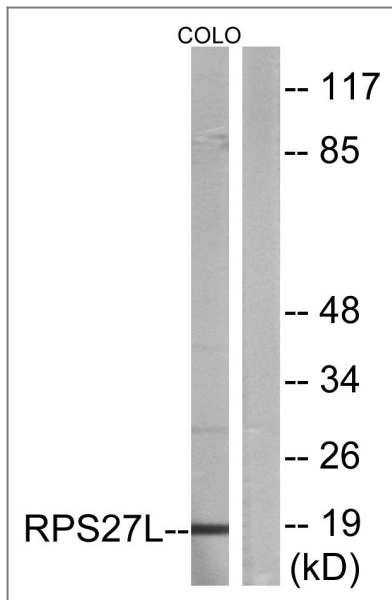
Target Information

Gene name	RPS27L		
Protein Name	40S ribosomal protein S27-like		
	Organism	Gene ID	UniProt ID
	Human	51065 ;	Q71UM5 ;
	Mouse	67941 ;	Q6ZWY3 ;
Cellular Localization	nucleus,nucleoplasm,ribosome,cytosolic small ribosomal subunit,		
Tissue specificity	Kidney,Umbilical cord blood,		
Function	cofactor:Binds 1 zinc ion per subunit .,similarity:Belongs to the ribosomal protein S27e family.,		

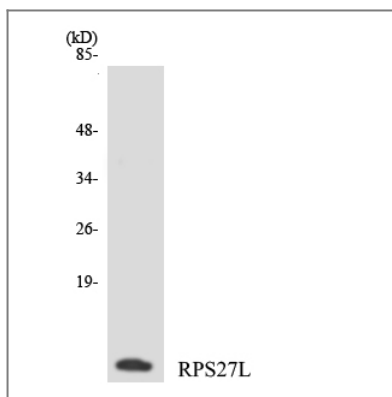
Validation Data



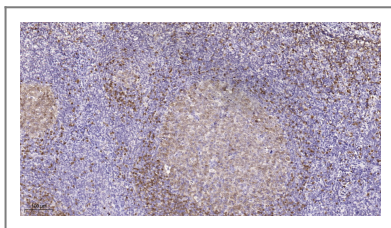
Western Blot analysis of various cells using Ribosomal Protein S27L Polyclonal Antibody



Western blot analysis of lysates from COLO cells, using RPS27L Antibody. The lane on the right is blocked with the synthesized peptide.



Western blot analysis of the lysates from COLO205 cells using RPS27L antibody.



Immunohistochemical analysis of paraffin-embedded human tonsil. 1, Tris-EDTA, pH 9.0 was used for antigen retrieval. 2 Antibody was diluted at 1:200 (4° overnight). 3, Secondary antibody was diluted at 1:200 (room temperature, 45 min).

Contact information

Orders: order@immunoway.com
 Support: tech@immunoway.com
 Telephone: 877-594-3616 (Toll Free), 408-747-0185
 Website: <http://www.immunoway.com>
 Address: 2200 Ringwood Ave San Jose, CA 95131 USA



Please scan the QR code to access additional product information:

Ribosomal Protein S27L Rabbit pAb