

Ribosomal Protein L36 Rabbit pAb

CatalogNo: YT4110

Key Features

Host Species

- Rabbit

Reactivity

- Human, Mouse, Rat

Applications

- WB, IHC, IF, ELISA

MW

- 12kD (Observed)

Isotype

- IgG

Recommended Dilution Ratios

WB 1:500-1:2000

IHC 1:100-1:300

IF 1:200-1:1000

ELISA 1:40000

Not yet tested in other applications.

Storage

Storage*

-15°C to -25°C/1 year (Do not lower than -25°C)

Formulation

Liquid in PBS containing 50% glycerol, 0.5% BSA and 0.02% sodium azide.

Basic Information

Clonality

Polyclonal

Immunogen Information

Immunogen

The antiserum was produced against synthesized peptide derived from human RPL36. AA range: 51-100

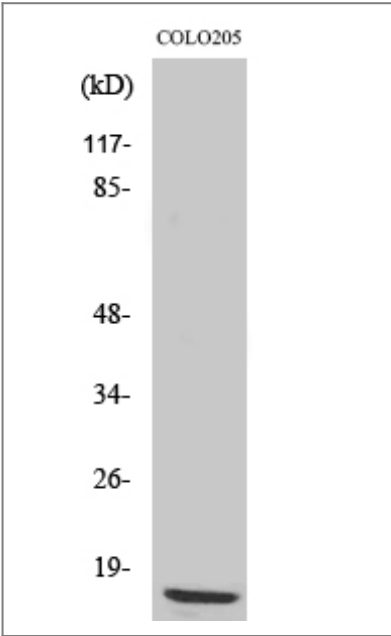
Specificity

Ribosomal Protein L36 Polyclonal Antibody detects endogenous levels of Ribosomal Protein L36 protein.

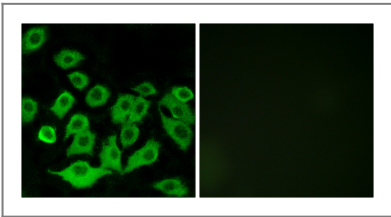
Target Information

| | | | |
|-----------------------|---|-------------------------|--------------------------|
| Gene name | RPL36 | | |
| Protein Name | 60S ribosomal protein L36 | | |
| | Organism | Gene ID | UniProt ID |
| | Human | 25873 ; | Q9Y3U8 ; |
| | Mouse | | P47964 ; |
| | Rat | 58927 ; | P39032 ; |
| Cellular Localization | Cytoplasm, cytosol . Cytoplasm . Detected on cytosolic polysomes (PubMed:25957688). . | | |
| Tissue specificity | Blood,Kidney,Lung carcinoma,Skin,Umbilical cord blood, | | |
| Function | Caution:Could be the product of a pseudogene.,similarity:Belongs to the ribosomal protein L36e family., | | |

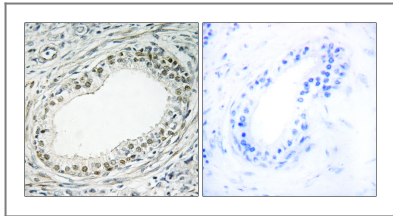
Validation Data



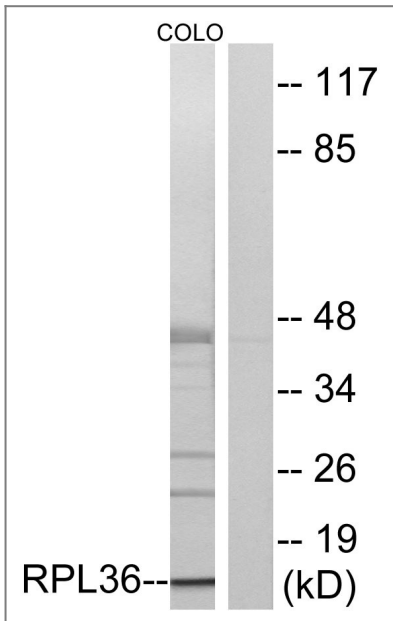
Western Blot analysis of various cells using Ribosomal Protein L36 Polyclonal Antibody diluted at 1:500



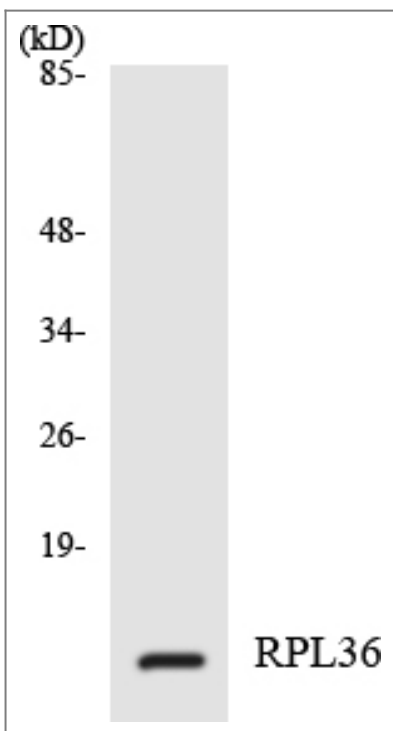
Immunofluorescence analysis of A549 cells, using RPL36 Antibody. The picture on the right is blocked with the synthesized peptide.



Immunohistochemistry analysis of paraffin-embedded human prostate carcinoma tissue, using RPL36 Antibody. The picture on the right is blocked with the synthesized peptide.



Western blot analysis of lysates from COLO cells, using RPL36 Antibody. The lane on the right is blocked with the synthesized peptide.



Western blot analysis of the lysates from 293 cells using RPL36 antibody.

| Contact information

Orders: order@immunoway.com
Support: tech@immunoway.com
Telephone: 877-594-3616 (Toll Free), 408-747-0185
Website: <http://www.immunoway.com>
Address: 2200 Ringwood Ave San Jose, CA 95131 USA



Please scan the QR code
to access additional
product information:
**Ribosomal Protein
L36 Rabbit pAb**

For Research Use Only. Not for Use in Diagnostic Procedures.

[Antibody](#) | [ELISA Kits](#) | [Protein](#) | [Reagents](#)