

Ribosomal Protein L28 Rabbit pAb

CatalogNo: YT4104

Key Features

Host Species

- Rabbit

Reactivity

- Human, Mouse, Rat

Applications

- WB, IHC, IF, ELISA

MW

- 20kD (Observed)

Isotype

- IgG

Recommended Dilution Ratios

WB 1:500-1:2000

IHC 1:100-1:300

ELISA 1:20000

IF 1:50-200

Storage

Storage*

-15°C to -25°C/1 year (Do not lower than -25°C)

Formulation

Liquid in PBS containing 50% glycerol, 0.5% BSA and 0.02% sodium azide.

Basic Information

Clonality

Polyclonal

Immunogen Information

Immunogen

The antiserum was produced against synthesized peptide derived from human RPL28. AA range: 41-90

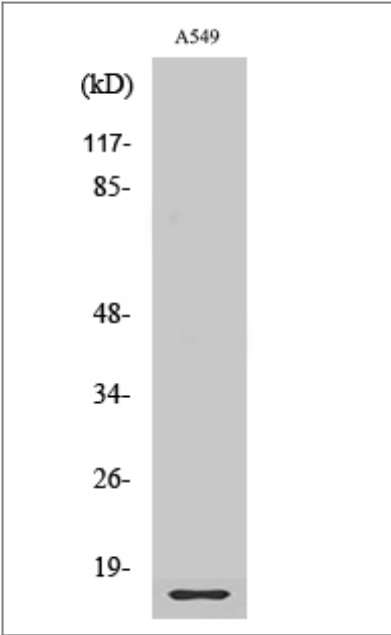
Specificity

Ribosomal Protein L28 Polyclonal Antibody detects endogenous levels of Ribosomal Protein L28 protein.

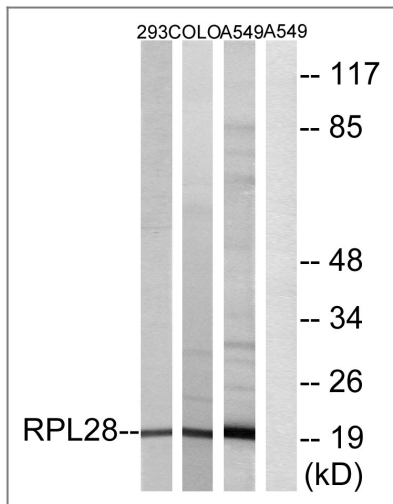
| Target Information

Gene name	RPL28		
Protein Name	60S ribosomal protein L28		
	Organism	Gene ID	UniProt ID
	Human	6158 ;	P46779 ;
	Mouse	19943 ;	P41105 ;
	Rat		P17702 ;
Cellular Localization	cytoplasm,cytosol,ribosome,membrane,cytosolic large ribosomal subunit,dendrite,cytoplasmic ribonucleoprotein granule,cell body,extracellular exosome,		
Tissue specificity	B-cell,Cerebellum,Colon,Hepatoma,Kidney,Ovarian carcinoma,Spleen,Uterus,		
Function	similarity:Belongs to the ribosomal protein L28e family.,		

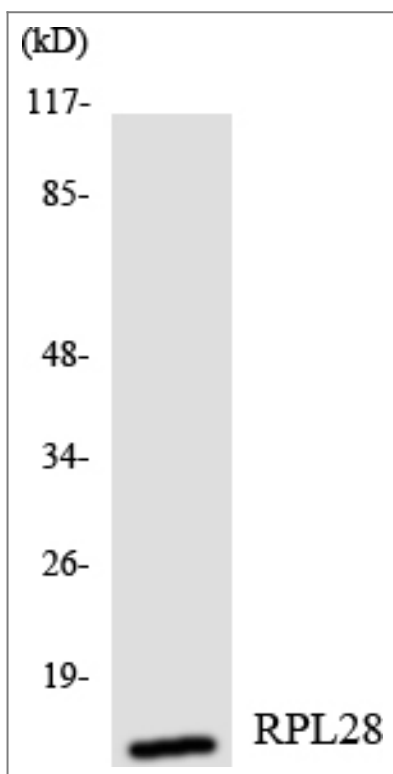
| Validation Data



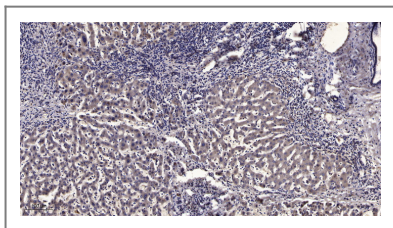
Western Blot analysis of various cells using Ribosomal Protein L28 Polyclonal Antibody diluted at 1:2000



Western blot analysis of lysates from A549, 293, and COLO cells, using RPL28 Antibody. The lane on the right is blocked with the synthesized peptide.



Western blot analysis of the lysates from HeLa cells using RPL28 antibody.



Immunohistochemical analysis of paraffin-embedded human liver cancer. 1, Antibody was diluted at 1:200(4° overnight). 2, Tris-EDTA,pH9.0 was used for antigen retrieval. 3,Secondary antibody was diluted at 1:200(room temperature, 45min).

Contact information

Orders: order@immunoway.com
 Support: tech@immunoway.com
 Telephone: 877-594-3616 (Toll Free), 408-747-0185
 Website: <http://www.immunoway.com>
 Address: 2200 Ringwood Ave San Jose, CA 95131 USA



Please scan the QR code to access additional product information:
Ribosomal Protein L28 Rabbit pAb

