

Ribosomal Protein L17 Rabbit pAb

CatalogNo: YT4098

Orthogonal Validated 

Key Features

Host Species

- Rabbit

Reactivity

- Human, Mouse, Rat, Monkey, Cat

Applications

- WB, IHC, IF, ELISA

MW

- 24kD (Observed)

Isotype

- IgG

Recommended Dilution Ratios

WB 1:500-1:2000**IHC 1:100-1:300****ELISA 1:10000****IF 1:50-200**

Storage

Storage*

-15°C to -25°C/1 year (Do not lower than -25°C)

Formulation

Liquid in PBS containing 50% glycerol, 0.5% BSA and 0.02% sodium azide.

Basic Information

Clonality

Polyclonal

Immunogen Information

Immunogen

The antiserum was produced against synthesized peptide derived from human RPL17. AA range:101-150

Specificity

Ribosomal Protein L17 Polyclonal Antibody detects endogenous levels of Ribosomal Protein L17 protein.

Target Information

Gene name RPL17

Protein Name 60S ribosomal protein L17

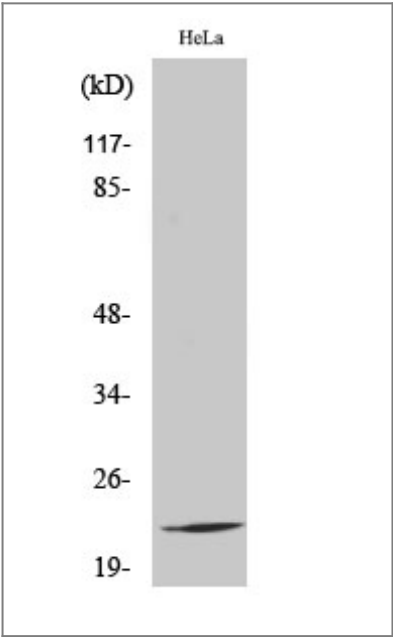
Organism	Gene ID	UniProt ID
Human	6139 ;	P18621 ;
Mouse		Q9CPR4 ;
Rat	291434 ;	P24049 ;

Cellular Localization nucleus,cytosol,large ribosomal subunit,cytosolic large ribosomal subunit,

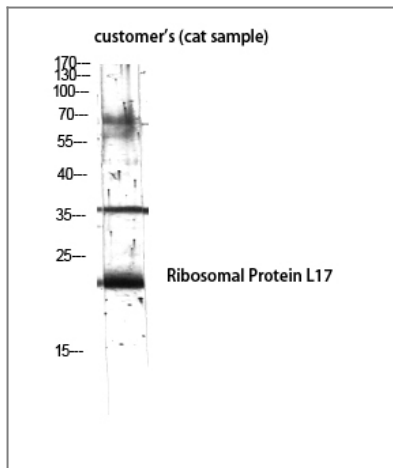
Tissue specificity Expressed in pancreas, lung, colon, cystic duct, gall bladder, kidney and liver. Expressed at high levels in the well differentiated pancreatic tumor cell lines HPAF, COLO 357 and Capan-1, the moderately differentiated pancreatic tumor cell lines T3M-4, AsPc-1 and BxPc-3, the poorly differentiated pancreatic tumor cell line MIA PaCa-2, and the pancreatic tumor cell lines of undefined differentiation status such as SW979. Expressed at lower levels in the poorly differentiated pancreatic tumor cell lines HCG-25 and PANC-1.

Function similarity:Belongs to the ribosomal protein L22P family.,tissue specificity:Expressed in pancreas, lung, colon, cystic duct, gall bladder, kidney and liver. Expressed at high levels in the well differentiated pancreatic tumor cell lines HPAF, Colo 357 and Capan-1, the moderately differentiated pancreatic tumor cell lines T3M4, AsPc-1 and BxPc-3, the poorly differentiated pancreatic tumor cell line Mia Paca, and the pancreatic tumor cell lines of undefined differentiation status Panc 89 and SW 979. Expressed at lower levels in the poorly differentiated pancreatic tumor cell lines HGC 25 and Panc 1.,

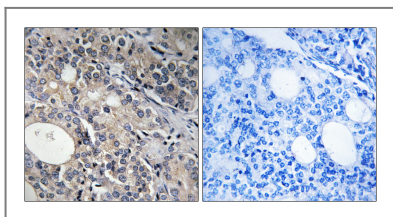
Validation Data



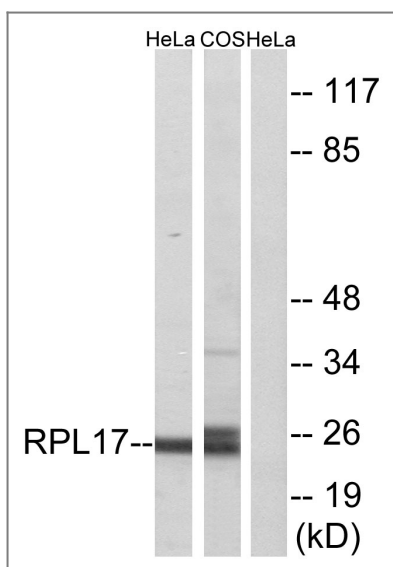
Western Blot analysis of various cells using Ribosomal Protein L17 Polyclonal Antibody diluted at 1:2000



Western Blot analysis of customer's (cat sample) using Ribosomal Protein L17 Polyclonal Antibody diluted at 1:2000



Immunohistochemistry analysis of paraffin-embedded human prostate carcinoma tissue, using RPL17 Antibody. The picture on the right is blocked with the synthesized peptide.



Western blot analysis of lysates from HeLa and COS7 cells, using RPL17 Antibody. The lane on the right is blocked with the synthesized peptide.

Contact information

Orders: order@immunoway.com
 Support: tech@immunoway.com
 Telephone: 877-594-3616 (Toll Free), 408-747-0185
 Website: <http://www.immunoway.com>
 Address: 2200 Ringwood Ave San Jose, CA 95131 USA



Please scan the QR code to access additional product information:
Ribosomal Protein L17 Rabbit pAb