

RGR Rabbit pAb

CatalogNo: YT4069

Key Features

Host Species

- Rabbit

Reactivity

- Human, Mouse

Applications

- IHC, IF, ELISA

MW

- 32kD (Calculated)

Isotype

- IgG

Recommended Dilution Ratios

IHC 1:100-1:300

IF 1:200-1:1000

ELISA 1:5000

Not yet tested in other applications.

Storage

Storage*

-15°C to -25°C/1 year (Do not lower than -25°C)

Formulation

Liquid in PBS containing 50% glycerol, 0.5% BSA and 0.02% sodium azide.

Basic Information

Clonality

Polyclonal

Immunogen Information

Immunogen

The antiserum was produced against synthesized peptide derived from human RGR. AA range: 169-218

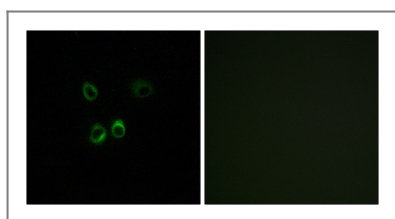
Specificity

RGR Polyclonal Antibody detects endogenous levels of RGR protein.

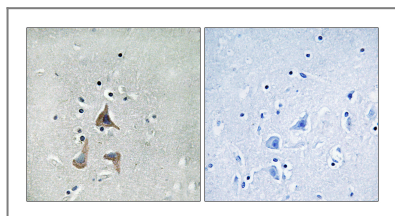
Target Information

Gene name	RGR		
Protein Name	RPE-retinal G protein-coupled receptor		
	Organism	Gene ID	UniProt ID
	Human	5995;	P47804;
	Mouse		Q9Z2B3;
Cellular Localization	Membrane; Multi-pass membrane protein.		
Tissue specificity	Preferentially expressed at high levels in the retinal pigment epithelium (RPE) and Mueller cells of the neural retina.		
Function	<p>Disease:Defects in RGR are a cause of retinitis pigmentosa autosomal recessive (ARRP) [MIM:268000]. RP leads to degeneration of retinal photoreceptor cells. Patients typically have night vision blindness and loss of midperipheral visual field. As their condition progresses, they lose their far peripheral visual field and eventually central vision as well.,Function:Receptor for all-trans- and 11-cis-retinal. Binds preferentially to the former and may catalyze the isomerization of the chromophore by a retinochrome-like mechanism.,online information:Retina International's Scientific Newsletter,PTM:Covalently binds all-trans- and 11-cis-retinal.,similarity:Belongs to the G-protein coupled receptor 1 family. Opsin subfamily.,tissue specificity:Preferentially expressed at high levels in the retinal pigment epithelium (RPE) and Mueller cells of the neural retina.,</p>		

Validation Data



Immunofluorescence analysis of MCF7 cells, using RGR Antibody. The picture on the right is blocked with the synthesized peptide.



Immunohistochemistry analysis of paraffin-embedded human brain tissue, using RGR Antibody. The picture on the right is blocked with the synthesized peptide.

Contact information

Orders: order@immunoway.com
Support: tech@immunoway.com
Telephone: 877-594-3616 (Toll Free), 408-747-0185
Website: <http://www.immunoway.com>
Address: 2200 Ringwood Ave San Jose, CA 95131 USA



Please scan the QR code
to access additional
product information:
RGR Rabbit pAb

For Research Use Only. Not for Use in Diagnostic Procedures.

[Antibody](#) | [ELISA Kits](#) | [Protein](#) | [Reagents](#)