

## RGPD2/3/4/6/8 Rabbit pAb

CatalogNo: YT4068

### | Key Features

#### Host Species

- Rabbit

#### Reactivity

- Human

#### Applications

- WB,ELISA,IHC

#### MW

- 110kD (Observed)

#### Isotype

- IgG

### | Recommended Dilution Ratios

**WB 1:500-2000**

**IHC 1:50-300**

**ELISA 1:2000-20000**

### | Storage

**Storage\*** -15°C to -25°C/1 year(Do not lower than -25°C)

**Formulation** Liquid in PBS containing 50% glycerol, 0.5% BSA and 0.02% sodium azide.

### | Basic Information

**Clonality** Polyclonal

### | Immunogen Information

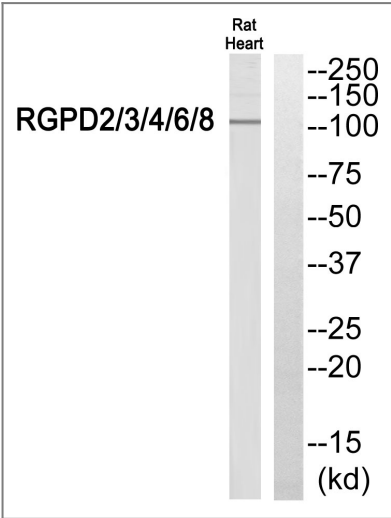
**Immunogen** The antiserum was produced against synthesized peptide derived from human RGPD2/3/4/6/8. AA range:577-626

**Specificity** RGPD2/3/4/6/8 Polyclonal Antibody detects endogenous levels of RGPD2/3/4/6/8 protein.

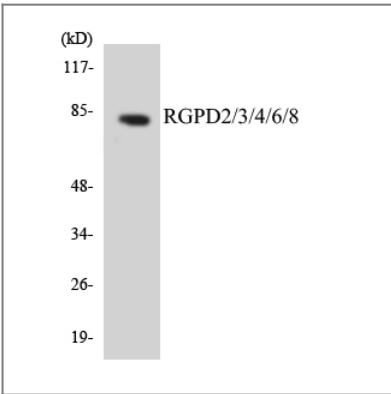
### | Target Information

Gene name	RGP8		
Protein Name	RANBP2-like and GRIP domain-containing protein 8		
	Organism	Gene ID	UniProt ID
	Human	<a href="#">729540</a> ; <a href="#">84220</a> ; <a href="#">729857</a> ;	<a href="#">O14715</a> ; <a href="#">Q53T03</a> ; <a href="#">Q7Z3J3</a> ; <a href="#">A6NKT7</a> ; <a href="#">P0C839</a> ;
Cellular Localization	intracellular,nuclear pore,		
Tissue specificity	Brain,Epithelium,Retina,Testis,		
Function	Caution:The sequence shown here is derived from an Ensembl automatic analysis pipeline and should be considered as preliminary data.,miscellaneous:One of the 8 copies of RANBP2 clustered close to the centromere of chromosome 2.,miscellaneous:One of the 8 copies of RANBP2 clustered close to the chromosome 2 centromere.,similarity:Contains 1 GRIP domain.,similarity:Contains 2 RanBD1 domains.,similarity:Contains 2 TPR repeats.,similarity:Contains 3 TPR repeats.,tissue specificity:Expressed in testis.,		

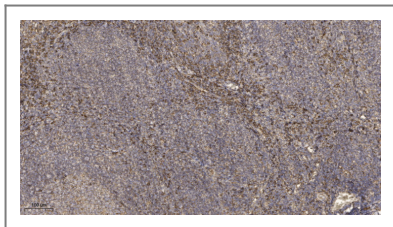
Validation Data



Western blot analysis of RGP8/3/4/6/8 Antibody. The lane on the right is blocked with the RGP8/3/4/6/8 peptide.



Western blot analysis of the lysates from Jurkat cells using RGP8/3/4/6/8 antibody.



Immunohistochemical analysis of paraffin-embedded human tonsil. 1, Antibody was diluted at 1:200(4° overnight). 2, Tris-EDTA,pH9.0 was used for antigen retrieval. 3,Secondary antibody was diluted at 1:200(room temperature, 45min).

## | Contact information

Orders: [order@immunoway.com](mailto:order@immunoway.com)  
Support: [tech@immunoway.com](mailto:tech@immunoway.com)  
Telephone: 877-594-3616 (Toll Free), 408-747-0185  
Website: <http://www.immunoway.com>  
Address: 2200 Ringwood Ave San Jose, CA 95131 USA



Please scan the QR code  
to access additional  
product information:  
**RGP2/3/4/6/8**  
**Rabbit pAb**

---

For Research Use Only. Not for Use in Diagnostic Procedures.

[Antibody](#) | [ELISA Kits](#) | [Protein](#) | [Reagents](#)