

## RFWD3 Rabbit pAb

CatalogNo: YT4064

### Key Features

#### Host Species

- Rabbit

#### Reactivity

- Human, Mouse

#### Applications

- WB, IHC, IF, ELISA

#### MW

- 85kD (Observed)

#### Isotype

- IgG

### Recommended Dilution Ratios

**WB 1:500-1:2000**

**IHC 1:100-1:300**

**ELISA 1:40000**

**IF 1:50-200**

### Storage

#### Storage\*

-15°C to -25°C/1 year (Do not lower than -25°C)

#### Formulation

Liquid in PBS containing 50% glycerol, 0.5% BSA and 0.02% sodium azide.

### Basic Information

#### Clonality

Polyclonal

### Immunogen Information

#### Immunogen

The antiserum was produced against synthesized peptide derived from human RFWD3. AA range: 374-423

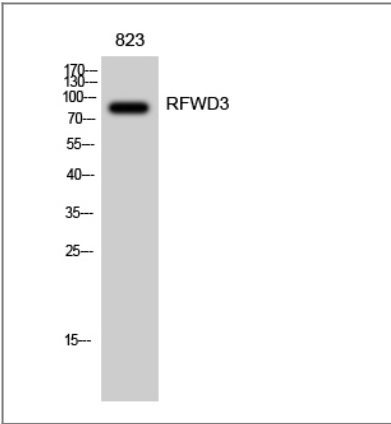
#### Specificity

RFWD3 Polyclonal Antibody detects endogenous levels of RFWD3 protein.

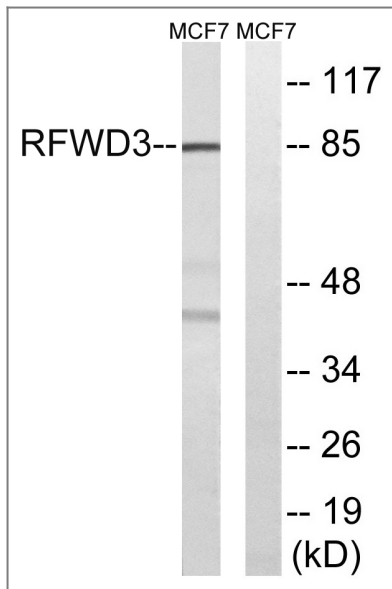
### Target Information

Gene name	RFWD3		
Protein Name	E3 ubiquitin-protein ligase RFWD3		
	Organism	Gene ID	UniProt ID
	Human	<a href="#">55159</a> ;	<a href="#">Q6PCD5</a> ;
	Mouse		<a href="#">Q8CIK8</a> ;
Cellular Localization	Nucleus . Nucleus, PML body . Cytoplasm . In undamaged cells, found both in the cytoplasm and in the nucleus, partially associated with PML nuclear bodies (PubMed:21558276). In response to replication block, such as that caused by hydroxyurea treatment, or to DNA damage caused by ionizing radiations or doxorubicin, recruited to the nucleus, to stalled replication forks or to sites of DNA repair (PubMed:21504906, PubMed:28575657). This recruitment depends upon RPA2 (PubMed:21504906). .		
Tissue specificity	Brain,Teratocarcinoma,Testis,		
Function	PTM:Phosphorylated upon DNA damage, probably by ATM or ATR.,similarity:Contains 1 RING-type zinc finger.,similarity:Contains 3 WD repeats.,		

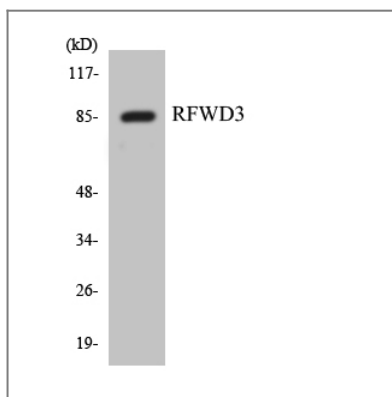
| Validation Data



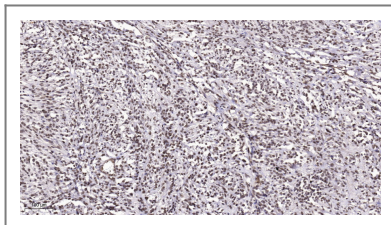
Western Blot analysis of 823 cells using RFWD3 Polyclonal Antibody diluted at 1:2000



Western blot analysis of lysates from MCF-7 cells, using RFWD3 Antibody. The lane on the right is blocked with the synthesized peptide.



Western blot analysis of the lysates from HepG2 cells using RFWD3 antibody.



Immunohistochemical analysis of paraffin-embedded human Small intestinal stromal tumor. 1, Tris-EDTA, pH 9.0 was used for antigen retrieval. 2 Antibody was diluted at 1:200 (4° overnight). 3, Secondary antibody was diluted at 1:200 (room temperature, 45 min).

## Contact information

Orders: [order@immunoway.com](mailto:order@immunoway.com)  
 Support: [tech@immunoway.com](mailto:tech@immunoway.com)  
 Telephone: 877-594-3616 (Toll Free), 408-747-0185  
 Website: <http://www.immunoway.com>  
 Address: 2200 Ringwood Ave San Jose, CA 95131 USA



Please scan the QR code to access additional product information:  
**RFWD3 Rabbit pAb**