

REP-2 Rabbit pAb

CatalogNo: YT4050

Key Features

Host Species

- Rabbit

Reactivity

- Human

Applications

- WB,IHC,IF,ELISA

MW

- 85kD (Observed)

Isotype

- IgG

Recommended Dilution Ratios

WB 1:500-1:2000

IHC 1:100-1:300

ELISA 1:5000

IF 1:50-200

Storage

Storage* -15°C to -25°C/1 year(Do not lower than -25°C)

Formulation Liquid in PBS containing 50% glycerol, 0.5% BSA and 0.02% sodium azide.

Basic Information

Clonality Polyclonal

Immunogen Information

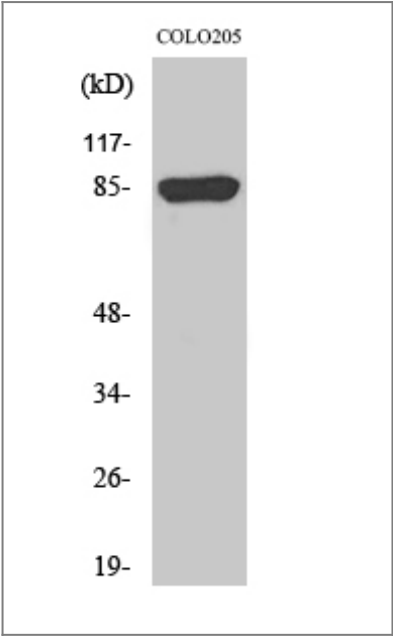
Immunogen The antiserum was produced against synthesized peptide derived from human CHML. AA range:128-177

Specificity REP-2 Polyclonal Antibody detects endogenous levels of REP-2 protein.

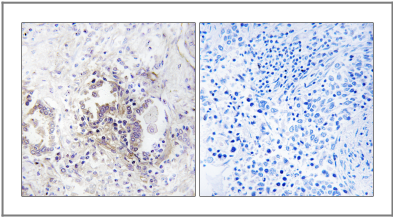
Target Information

Gene name	CHML		
Protein Name	Rab proteins geranylgeranyltransferase component A 2		
	Organism	Gene ID	UniProt ID
	Human	1122 ;	P26374 ;
	Mouse		Q9QZD5 ;
Cellular Localization	Cytoplasm, cytosol .		
Tissue specificity	Brain,		
Function	Function: Binds unprenylated Rab proteins, presents it to the catalytic Rab GGTase dimer, and remains bound to it after the geranylgeranyl transfer reaction. The component A is thought to be regenerated by transferring its prenylated Rab back to the donor membrane. Less effective than REP-1 in supporting prenylation of Rab3 family., miscellaneous: Substitutes for REP-1 thereby preventing widespread tissue abnormalities in patients with choroideremia who lack REP-1., similarity: Belongs to the Rab GDI family., subunit: Monomer. Interacts with Rab and Rab GGTase.,		

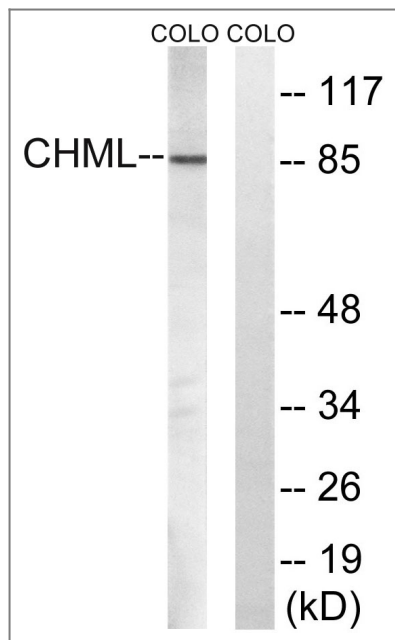
Validation Data



Western Blot analysis of various cells using REP-2 Polyclonal Antibody diluted at 1:1000



Immunohistochemistry analysis of paraffin-embedded human lung carcinoma tissue, using CHML Antibody. The picture on the right is blocked with the synthesized peptide.



Western blot analysis of lysates from COLO cells, using CHML Antibody. The lane on the right is blocked with the synthesized peptide.

Contact information

Orders: order@immunoway.com
 Support: tech@immunoway.com
 Telephone: 877-594-3616 (Toll Free), 408-747-0185
 Website: <http://www.immunoway.com>
 Address: 2200 Ringwood Ave San Jose, CA 95131 USA



Please scan the QR code to access additional product information:
REP-2 Rabbit pAb

For Research Use Only. Not for Use in Diagnostic Procedures.

[Antibody](#) | [ELISA Kits](#) | [Protein](#) | [Reagents](#)