

RECK Rabbit pAb

CatalogNo: YT4036

Key Features

Host Species

- Rabbit

Reactivity

- Human, Mouse

Applications

- IHC, IF, WB, ELISA

MW

- 110kD (Observed)

Isotype

- IgG

Recommended Dilution Ratios

WB 1:500-2000

IHC 1:100-1:300

IF 1:200-1:1000

ELISA 1:20000

Not yet tested in other applications.

Storage

Storage*

-15°C to -25°C/1 year (Do not lower than -25°C)

Formulation

Liquid in PBS containing 50% glycerol, 0.5% BSA and 0.02% sodium azide.

Basic Information

Clonality

Polyclonal

Immunogen Information

Immunogen

The antiserum was produced against synthesized peptide derived from human RECK. AA range: 21-70

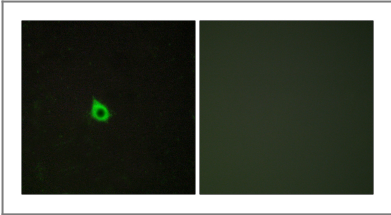
Specificity

RECK Polyclonal Antibody detects endogenous levels of RECK protein.

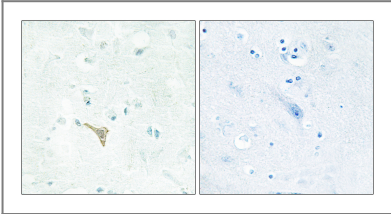
| Target Information

Gene name	RECK		
Protein Name	Reversion-inducing cysteine-rich protein with Kazal motifs		
	Organism	Gene ID	UniProt ID
	Human	8434 ;	O95980 ;
	Mouse	53614 ;	Q9Z0J1 ;
Cellular Localization	Cell membrane ; Lipid-anchor, GPI-anchor .		
Tissue specificity	Expressed in various tissues and untransformed cells (PubMed:9789069). It is undetectable in tumor-derived cell lines and oncogenically transformed cells (PubMed:9789069).		
Function	Function:Negatively regulates matrix metalloproteinase-9 (MMP-9) by suppressing MMP-9 secretion and by direct inhibition of its enzymatic activity. RECK down-regulation by oncogenic signals may facilitate tumor invasion and metastasis. Appears to also regulate MMP-2 and MT1-MMP, which are involved in cancer progression.,PTM:N-glycosylated.,similarity:Contains 3 Kazal-like domains.,subunit:Interacts with MMP-9.,tissue specificity:Expressed in various tissues and untransformed cells. It is undetectable in tumor-derived cell lines and oncogenically transformed cells.,		

| Validation Data



Immunofluorescence analysis of HepG2 cells, using RECK Antibody. The picture on the right is blocked with the synthesized peptide.



Immunohistochemistry analysis of paraffin-embedded human brain tissue, using RECK Antibody. The picture on the right is blocked with the synthesized peptide.

| Contact information

Orders: order@immunoway.com
Support: tech@immunoway.com
Telephone: 877-594-3616 (Toll Free), 408-747-0185
Website: http://www.immunoway.com
Address: 2200 Ringwood Ave San Jose, CA 95131 USA



Please scan the QR code
to access additional
product information:
RECK Rabbit pAb

For Research Use Only. Not for Use in Diagnostic Procedures.

[Antibody](#) | [ELISA Kits](#) | [Protein](#) | [Reagents](#)