

## RASSF6 Rabbit pAb

CatalogNo: YT4013

### Key Features

#### Host Species

- Rabbit

#### Reactivity

- Human,Rat,Mouse,

#### Applications

- WB,ELISA

#### MW

- 45kD (Observed)

#### Isotype

- IgG

### Recommended Dilution Ratios

**WB 1:500-1:2000**

**ELISA 1:10000**

**Not yet tested in other applications.**

### Storage

#### Storage\*

-15°C to -25°C/1 year(Do not lower than -25°C)

#### Formulation

Liquid in PBS containing 50% glycerol, 0.5% BSA and 0.02% sodium azide.

### Basic Information

#### Clonality

Polyclonal

### Immunogen Information

#### Immunogen

The antiserum was produced against synthesized peptide derived from human RASSF6. AA range:129-178

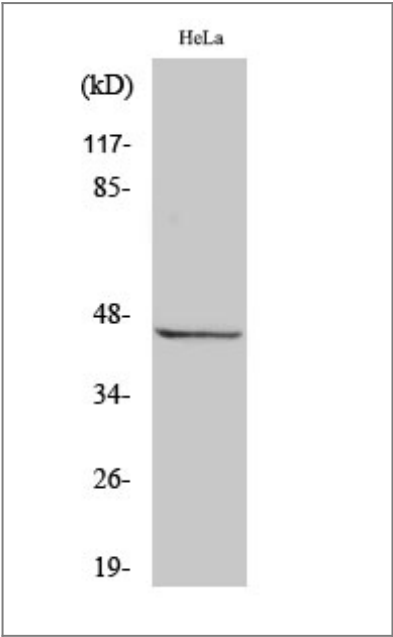
#### Specificity

RASSF6 Polyclonal Antibody detects endogenous levels of RASSF6 protein.

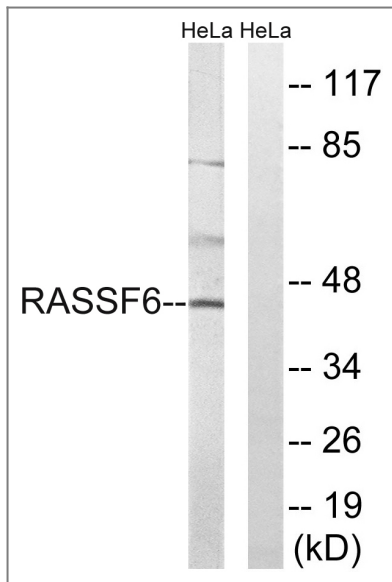
### Target Information

Gene name	RASSF6		
Protein Name	Ras association domain-containing protein 6		
	Organism	Gene ID	UniProt ID
	Human	<a href="#">166824</a> ;	<a href="#">Q6ZTQ3</a> ;
	Mouse		<a href="#">Q80UQ2</a> ;
Tissue specificity	Highest expression in thymus, kidney and placenta. Also detected in colon, small intestine and lung. Tends to be down-regulated in 30-60% of tumors derived from breast, colon, kidney liver, rectum, pancreas, stomach and the thyroid gland compared to the normal counterpart.		
Function	Function:May act as a Ras effector protein.,sequence Caution:Translated as Gln.,similarity:Contains 1 Ras-associating domain.,similarity:Contains 1 SARAH domain.,		

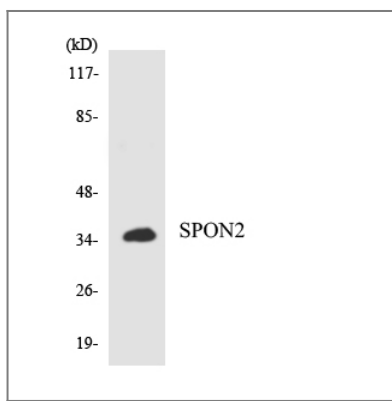
| Validation Data



Western Blot analysis of various cells using RASSF6 Polyclonal Antibody



Western blot analysis of lysates from HeLa cells, using RASSF6 Antibody. The lane on the right is blocked with the synthesized peptide.



Western blot analysis of the lysates from K562 cells using RASSF6 antibody.

## Contact information

Orders: [order@immunoway.com](mailto:order@immunoway.com)  
 Support: [tech@immunoway.com](mailto:tech@immunoway.com)  
 Telephone: 877-594-3616 (Toll Free), 408-747-0185  
 Website: <http://www.immunoway.com>  
 Address: 2200 Ringwood Ave San Jose, CA 95131 USA



Please scan the QR code to access additional product information:  
**RASSF6 Rabbit pAb**

For Research Use Only. Not for Use in Diagnostic Procedures.

[Antibody](#) | [ELISA Kits](#) | [Protein](#) | [Reagents](#)