

Ras-GRF1 Rabbit pAb

CatalogNo: YT4009

Key Features

Host Species

- Rabbit

Reactivity

- Mouse,Rat

Applications

- IHC,IF,WB,ELISA

MW

- 145kD (Calculated)

Isotype

- IgG

Storage

Storage* -15°C to -25°C/1 year(Do not lower than -25°C)

Formulation Liquid in PBS containing 50% glycerol, 0.5% BSA and 0.02% sodium azide.

Recommended Dilution Ratios

WB 1:500-2000

IHC 1:100-1:300

ELISA 1:5000

IF 1:50-200

Basic Information

Clonality Polyclonal

Immunogen Information

Immunogen The antiserum was produced against synthesized peptide derived from human Ras-GRF1. AA range:882-931

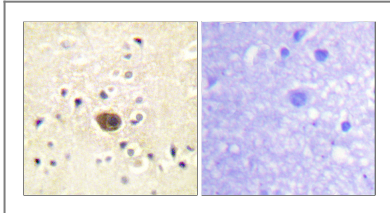
Specificity Ras-GRF1 Polyclonal Antibody detects endogenous levels of Ras-GRF1 protein.

Target Information

Gene name RASGRF1 CDC25 GNRP GRF1
Protein Name Ras-specific guanine nucleotide-releasing factor 1

Organism	Gene ID	UniProt ID
Human	5923 ;	Q13972 ;
Mouse	19417 ;	P27671 ;
Rat	192213 ;	P28818 ;

Validation Data



Immunohistochemistry analysis of paraffin-embedded human brain tissue, using Ras-GRF1 Antibody. The picture on the right is blocked with the synthesized peptide.

Contact information

Orders: order@immunoway.com
Support: tech@immunoway.com
Telephone: 877-594-3616 (Toll Free), 408-747-0185
Website: <http://www.immunoway.com>
Address: 2200 Ringwood Ave San Jose, CA 95131 USA



Please scan the QR code to access additional product information:
Ras-GRF1 Rabbit pAb

For Research Use Only. Not for Use in Diagnostic Procedures.

[Antibody](#) | [ELISA Kits](#) | [Protein](#) | [Reagents](#)