

## RAP1 Rabbit pAb

CatalogNo: YT4005

### | Key Features

#### Host Species

- Rabbit

#### Reactivity

- Human,Rat,Mouse,

#### Applications

- WB,IHC

#### MW

- 55kD (Observed)

#### Isotype

- IgG

### | Recommended Dilution Ratios

WB 1:500-2000

IHC 1:50-300

### | Storage

**Storage\*** -15°C to -25°C/1 year(Do not lower than -25°C)

**Formulation** Liquid in PBS containing 50% glycerol, 0.5% BSA and 0.02% sodium azide.

### | Basic Information

**Clonality** Polyclonal

### | Immunogen Information

**Immunogen** The antiserum was produced against synthesized peptide derived from human RAP1. AA range:203-252

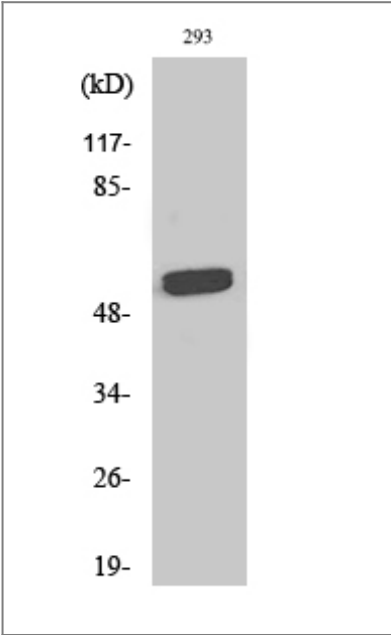
**Specificity** RAP1 Polyclonal Antibody detects endogenous levels of RAP1 protein.

### | Target Information

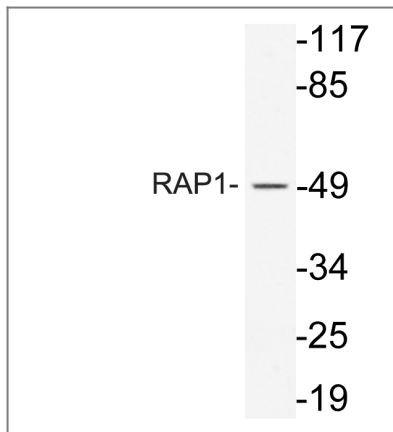
**Gene name** TERF2IP

<b>Protein Name</b>	Telomeric repeat-binding factor 2-interacting protein 1		
	<b>Organism</b>	<b>Gene ID</b>	<b>UniProt ID</b>
	Human	<a href="#">54386;</a>	<a href="#">Q9NYB0;</a>
	Mouse		<a href="#">Q91VL8;</a>
<b>Cellular Localization</b>	Nucleus . Cytoplasm . Chromosome . Chromosome, telomere . Associates with chromosomes, both at telomeres and in extratelomeric sites. Also exists as a cytoplasmic form, where it associates with the IKK complex. .		
<b>Tissue specificity</b>	Ubiquitous. Highly expressed.		
<b>Function</b>	Function:May play a role in telomere length regulation. Component of the shelterin complex (telosome) that is involved in the regulation of telomere length and protection. Shelterin associates with arrays of double-stranded TTAGGG repeats added by telomerase and protects chromosome ends; without its protective activity, telomeres are no longer hidden from the DNA damage surveillance and chromosome ends are inappropriately processed by DNA repair pathways.,miscellaneous:Recruited to telomeres by TRF2; seemingly it does not directly bind to DNA itself.,PTM:Phosphorylated upon DNA damage, probably by ATM or ATR.,sequence Caution:Translated as Glu.,similarity:Contains 1 BRCT domain.,similarity:Contains 1 Myb-like domain.,subcellular location:Colocalizes with telomeric DNA in interphase and metaphase cells.,subunit:Homodimer. Component of the shelterin complex (telosome) composed of TERF1, TERF2, TINF2, TERF2IP ACD and POT1. Binds to TRF2 (but not TRF1) with its C-terminus.,tissue specificity:Ubiquitous. Highly expressed.,		

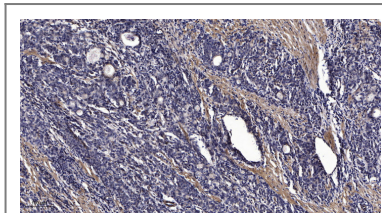
| Validation Data



Western Blot analysis of various cells using RAP1 Polyclonal Antibody diluted at 1:500



Western blot analysis of lysate from 293 cells, using RAP1 antibody.



Immunohistochemical analysis of paraffin-embedded human Gastric adenocarcinoma. 1, Antibody was diluted at 1:200(4° overnight). 2, Tris-EDTA, pH9.0 was used for antigen retrieval. 3, Secondary antibody was diluted at 1:200(room temperature, 45min).

## Contact information

Orders: [order@immunoway.com](mailto:order@immunoway.com)  
 Support: [tech@immunoway.com](mailto:tech@immunoway.com)  
 Telephone: 877-594-3616 (Toll Free), 408-747-0185  
 Website: <http://www.immunoway.com>  
 Address: 2200 Ringwood Ave San Jose, CA 95131 USA



Please scan the QR code to access additional product information:  
**RAP1 Rabbit pAb**

For Research Use Only. Not for Use in Diagnostic Procedures.

[Antibody](#) | [ELISA Kits](#) | [Protein](#) | [Reagents](#)