

Rad23B Rabbit pAb

CatalogNo: YT3962

Key Features

Host Species

- Rabbit

Reactivity

- Human, Mouse, Rat

Applications

- WB, IHC, IF, ELISA

MW

- 58kD (Observed)

Isotype

- IgG

Storage

Storage* -15°C to -25°C/1 year (Do not lower than -25°C)

Formulation Liquid in PBS containing 50% glycerol, 0.5% BSA and 0.02% sodium azide.

Recommended Dilution Ratios

WB 1:500-1:2000

IHC 1:100-1:300

IF 1:200-1:1000

ELISA 1:20000

Not yet tested in other applications.

Basic Information

Clonality Polyclonal

Immunogen Information

Immunogen The antiserum was produced against synthesized peptide derived from human RAD23B. AA range:1-50

Specificity Rad23B Polyclonal Antibody detects endogenous levels of Rad23B protein.

Target Information

Gene name RAD23B

Protein Name UV excision repair protein RAD23 homolog B

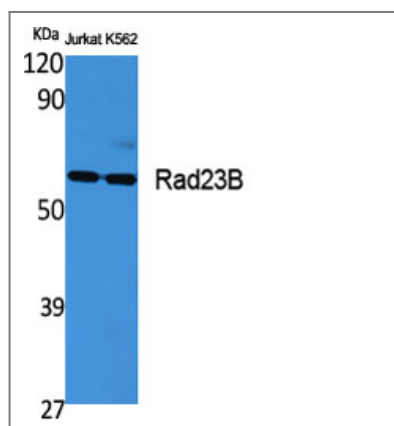
Organism	Gene ID	UniProt ID
Human	5887 ;	P54727 ;
Mouse	19359 ;	P54728 ;
Rat	298012 ;	Q4KMA2 ;

Cellular Localization Nucleus. Cytoplasm. The intracellular distribution is cell cycle dependent. Localized to the nucleus and the cytoplasm during G1 phase. Nuclear levels decrease during S-phase; upon entering mitosis, relocalizes in the cytoplasm without association with chromatin.

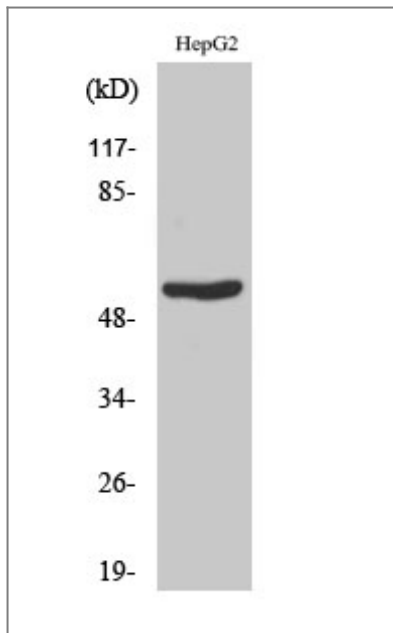
Tissue specificity Epithelium,Testis,Thymus,Uterus,

Function Domain:The ubiquitin-like domain mediates interaction with MJD.,Function:Plays a central role both in proteosomal degradation of misfolded proteins and DNA repair. Central component of a complex required to couple deglycosylation and proteasome-mediated degradation of misfolded proteins in the endoplasmic reticulum that are retrotranslocated in the cytosol. Involved in DNA excision repair by stabilizing XPC protein. May play a part in DNA damage recognition and/or in altering chromatin structure to allow access by damage-processing enzymes.,similarity:Belongs to the RAD23 family.,similarity:Contains 1 STI1 domain.,similarity:Contains 1 ubiquitin-like domain.,similarity:Contains 2 UBA domains.,subunit:Component of a complex required to couple retrotranslocation, ubiquitination and deglycosylation composed of NGLY1, SAKS1, AMFR, VCP and RAD23B (By similarity). Interacts with the 26S proteasome. Interacts directly with NGLY1. Heterodimer of a 125 kDa subunit (p125) and of a 58 kDa subunit (p58). Interacts with MJD and XPC.,

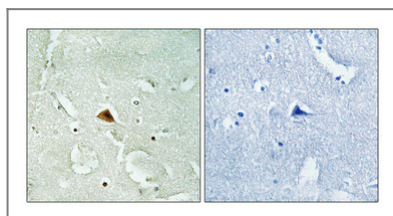
Validation Data



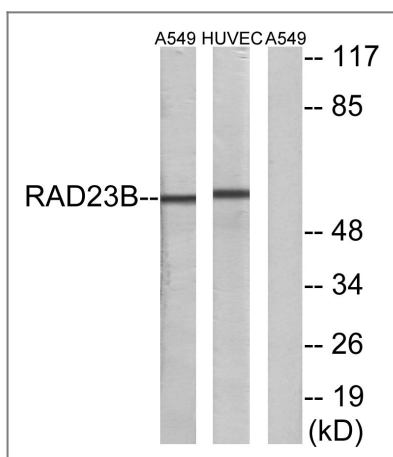
Western Blot analysis of various cells using Rad23B Polyclonal Antibody



Western Blot analysis of HepG2 cells using Rad23B Polyclonal Antibody



Immunohistochemical analysis of paraffin-embedded Human brain. Antibody was diluted at 1:100(4° overnight). High-pressure and temperature Tris-EDTA,pH8.0 was used for antigen retrieval. Negative contrl (right) obtaned from antibody was pre-absorbed by immunogen peptide.



Western blot analysis of lysates from A549 and HUVEC cells, using RAD23B Antibody. The lane on the right is blocked with the synthesized peptide.

Contact information

Orders: order@immunoway.com
 Support: tech@immunoway.com
 Telephone: 877-594-3616 (Toll Free), 408-747-0185
 Website: <http://www.immunoway.com>
 Address: 2200 Ringwood Ave San Jose, CA 95131 USA



Please scan the QR code to access additional product information:
Rad23B Rabbit pAb