

RACK7 Rabbit pAb

CatalogNo: YT3955

Key Features

Host Species

- Rabbit

Reactivity

- Human

Applications

- WB,ELISA,IHC

MW

- 132kD (Observed)

Isotype

- IgG

Recommended Dilution Ratios

WB 1:500-2000

IHC 1:50-300

ELISA 1:2000-20000

Storage

Storage* -15°C to -25°C/1 year(Do not lower than -25°C)

Formulation Liquid in PBS containing 50% glycerol, 0.5% BSA and 0.02% sodium azide.

Basic Information

Clonality Polyclonal

Immunogen Information

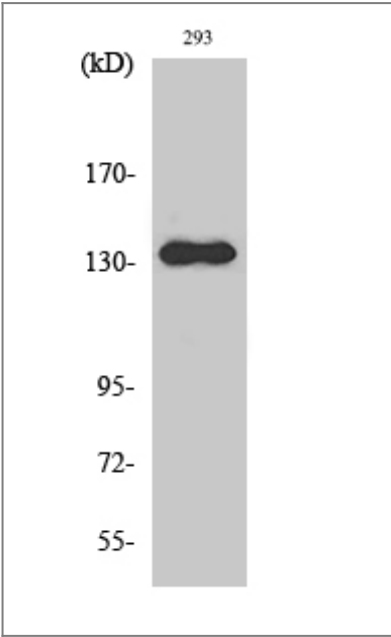
Immunogen The antiserum was produced against synthesized peptide derived from human PKCB1. AA range:581-630

Specificity RACK7 Polyclonal Antibody detects endogenous levels of RACK7 protein.

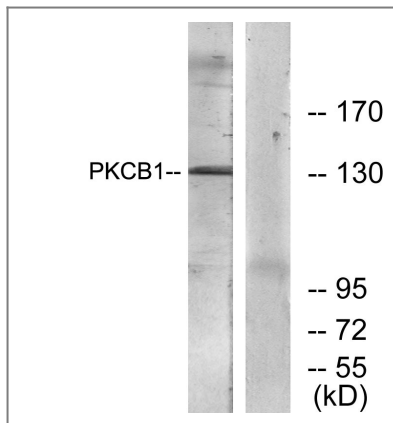
Target Information

Gene name	ZMYND8		
Protein Name	Protein kinase C-binding protein 1		
	Organism	Gene ID	UniProt ID
	Human	23613 ;	Q9ULU4 ;
Cellular Localization	Nucleus . Cytoplasm . Sequestered in the cytoplasm through the interaction with DBN1. .		
Tissue specificity	Expressed in all tissues examined with highest expression in brain, lung, pancreas, and placenta. Expressed in cutaneous T-cell lymphomas (CTCL).		
Function	PTM:Phosphorylated upon DNA damage, probably by ATM or ATR.,similarity:Contains 1 bromo domain.,similarity:Contains 1 MYND-type zinc finger.,similarity:Contains 1 PHD-type zinc finger.,similarity:Contains 1 PWWP domain.,subunit:Interacts in vitro with PRKCB1.,tissue specificity:Expressed in all tissues examined with highest expression in brain, lung, pancreas, and placenta. Expressed in cutaneous T-cell lymphomas (CTCL).,		

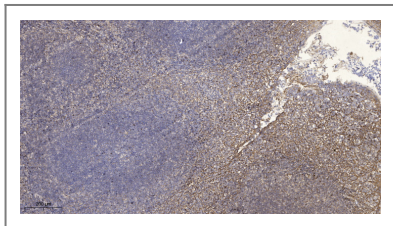
Validation Data



Western Blot analysis of various cells using RACK7 Polyclonal Antibody



Western blot analysis of lysates from 293 cells, using PKCB1 Antibody. The lane on the right is blocked with the synthesized peptide.



Immunohistochemical analysis of paraffin-embedded human tonsil. 1, Antibody was diluted at 1:200(4° overnight). 2, Tris-EDTA,pH9.0 was used for antigen retrieval. 3,Secondary antibody was diluted at 1:200(room temperature, 45min).

Contact information

Orders: order@immunoway.com
 Support: tech@immunoway.com
 Telephone: 877-594-3616 (Toll Free), 408-747-0185
 Website: <http://www.immunoway.com>
 Address: 2200 Ringwood Ave San Jose, CA 95131 USA



Please scan the QR code to access additional product information:
RACK7 Rabbit pAb

For Research Use Only. Not for Use in Diagnostic Procedures.

[Antibody](#) | [ELISA Kits](#) | [Protein](#) | [Reagents](#)