

Rabr Rabbit pAb

CatalogNo: YT3951

Key Features

Host Species

- Rabbit

Reactivity

- Human, Mouse

Applications

- WB, ELISA, IHC

MW

- 49kD (Observed)

Isotype

- IgG

Recommended Dilution Ratios

WB 1:500-2000

IHC 1:50-300

ELISA 1:2000-20000

Storage

Storage* -15°C to -25°C/1 year (Do not lower than -25°C)

Formulation Liquid in PBS containing 50% glycerol, 0.5% BSA and 0.02% sodium azide.

Basic Information

Clonality Polyclonal

Immunogen Information

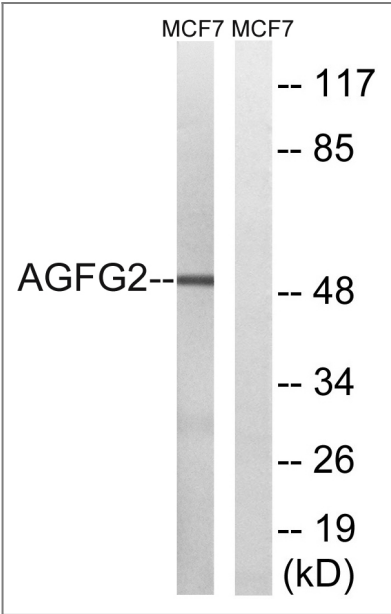
Immunogen The antiserum was produced against synthesized peptide derived from human AGFG2. AA range: 91-140

Specificity Rabr Polyclonal Antibody detects endogenous levels of Rabr protein.

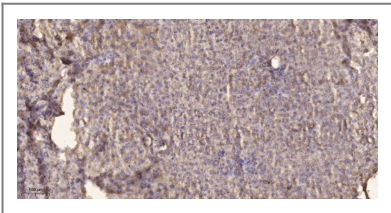
Target Information

Gene name	AGFG2		
Protein Name	Arf-GAP domain and FG repeat-containing protein 2		
	Organism	Gene ID	UniProt ID
	Human	3268;	O95081;
	Mouse	231801;	Q80WC7;
Cellular Localization	membrane,		
Tissue specificity	Brain,Kidney,Placenta,		
Function	Domain:Contains FG repeats and 4 N-P-F repeats.,similarity:Contains 1 Arf-GAP domain.,subunit:Interacts with EPS15R.,		

| Validation Data



Western blot analysis of lysates from MCF-7 cells, using AGFG2 Antibody. The lane on the right is blocked with the synthesized peptide.



Immunohistochemical analysis of paraffin-embedded human liver cancer. 1, Antibody was diluted at 1:200(4° overnight). 2, Tris-EDTA,pH9.0 was used for antigen retrieval. 3,Secondary antibody was diluted at 1:200(room temperature, 45min).

| Contact information

Orders: order@immunoway.com
Support: tech@immunoway.com
Telephone: 877-594-3616 (Toll Free), 408-747-0185
Website: http://www.immunoway.com
Address: 2200 Ringwood Ave San Jose, CA 95131 USA



Please scan the QR code
to access additional
product information:
Rabr Rabbit pAb

For Research Use Only. Not for Use in Diagnostic Procedures.

[Antibody](#) | [ELISA Kits](#) | [Protein](#) | [Reagents](#)