

Rabaptin-5 α Rabbit pAb

CatalogNo: YT3947

Key Features

Host Species

- Rabbit

Reactivity

- Human, Mouse, Rat

Applications

- IHC, IF, ELISA

MW

- 99kD (Calculated)

Isotype

- IgG

Recommended Dilution Ratios

IHC 1:100-1:300

ELISA 1:40000

IF 1:50-200

Storage

Storage*

-15°C to -25°C/1 year(Do not lower than -25°C)

Formulation

Liquid in PBS containing 50% glycerol, 0.5% BSA and 0.02% sodium azide.

Basic Information

Clonality

Polyclonal

Immunogen Information

Immunogen

The antiserum was produced against synthesized peptide derived from human RABEP1. AA range:549-598

Specificity

Rabaptin-5 α Polyclonal Antibody detects endogenous levels of Rabaptin-5 α protein.

Target Information

Gene name RABEP1

Protein Name Rab GTPase-binding effector protein 1

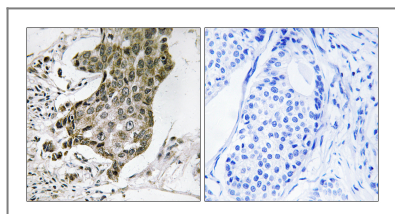
| Organism | Gene ID | UniProt ID |
|----------|------------------------|-------------------------|
| Human | 9135; | Q15276; |
| Mouse | 54189; | Q35551; |
| Rat | 54190; | Q35550; |

Cellular Localization Cytoplasm. Early endosome. Recycling endosome. Cytoplasmic vesicle.

Tissue specificity Cervix carcinoma,Epithelium,Fetal brain cortex,Kidney,Plate

Function Function:Rab effector protein acting as linker between gamma-adaptin, RAB4A and RAB5A. Involved in endocytic membrane fusion and membrane trafficking of recycling endosomes. Stimulates RABGEF1 mediated nucleotide exchange on RAB5A.,PTM:Proteolytic cleavage by caspases in apoptotic cells causes loss of endosome fusion activity.,similarity:Belongs to the rabaptin family.,subunit:Heterodimer with RABGEF1. The heterodimer binds RAB4A and RAB5A that have been activated by GTP-binding. Binds TSC2, GGA1, GGA2, GGA3, AP1G1 and AP1G2.,

Validation Data



Immunohistochemistry analysis of paraffin-embedded human breast carcinoma tissue, using RABEP1 Antibody. The picture on the right is blocked with the synthesized peptide.

Contact information

Orders: order@immunoway.com
Support: tech@immunoway.com
Telephone: 877-594-3616 (Toll Free), 408-747-0185
Website: <http://www.immunoway.com>
Address: 2200 Ringwood Ave San Jose, CA 95131 USA



Please scan the QR code to access additional product information:
Rabaptin-5α Rabbit pAb