

## Rab11-FIP2 Rabbit pAb

CatalogNo: YT3943

### Key Features

#### Host Species

- Rabbit

#### Reactivity

- Human, Mouse

#### Applications

- WB, ELISA, IHC

#### MW

- 58kD (Observed)

#### Isotype

- IgG

### Recommended Dilution Ratios

**WB 1:500-2000**

**IHC 1:50-300**

**ELISA 1:2000-20000**

### Storage

**Storage\*** -15°C to -25°C/1 year (Do not lower than -25°C)

**Formulation** Liquid in PBS containing 50% glycerol, 0.5% BSA and 0.02% sodium azide.

### Basic Information

**Clonality** Polyclonal

### Immunogen Information

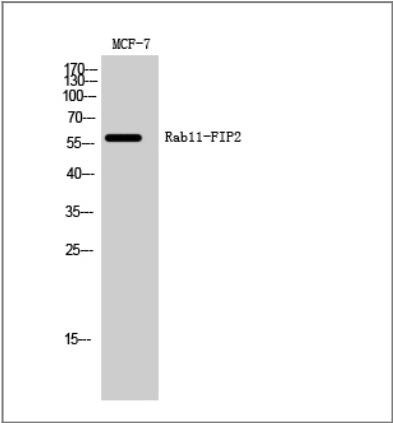
**Immunogen** The antiserum was produced against synthesized peptide derived from human RAB11FIP2. AA range: 340-389

**Specificity** Rab11-FIP2 Polyclonal Antibody detects endogenous levels of Rab11-FIP2 protein.

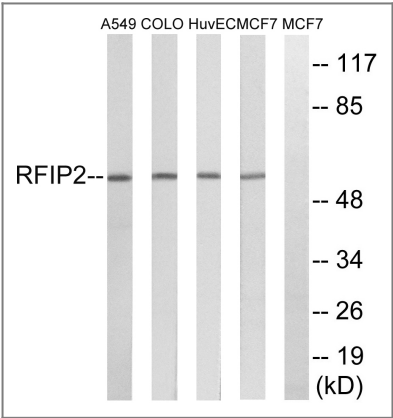
### Target Information

|                       |                                                                                                                                                                                                                                                                                                                                                                                                                                                                                                                                                                                                                                                                                                                                                                                                                                                |                         |                          |
|-----------------------|------------------------------------------------------------------------------------------------------------------------------------------------------------------------------------------------------------------------------------------------------------------------------------------------------------------------------------------------------------------------------------------------------------------------------------------------------------------------------------------------------------------------------------------------------------------------------------------------------------------------------------------------------------------------------------------------------------------------------------------------------------------------------------------------------------------------------------------------|-------------------------|--------------------------|
| Gene name             | RAB11FIP2                                                                                                                                                                                                                                                                                                                                                                                                                                                                                                                                                                                                                                                                                                                                                                                                                                      |                         |                          |
| Protein Name          | Rab11 family-interacting protein 2                                                                                                                                                                                                                                                                                                                                                                                                                                                                                                                                                                                                                                                                                                                                                                                                             |                         |                          |
|                       | Organism                                                                                                                                                                                                                                                                                                                                                                                                                                                                                                                                                                                                                                                                                                                                                                                                                                       | Gene ID                 | UniProt ID               |
|                       | Human                                                                                                                                                                                                                                                                                                                                                                                                                                                                                                                                                                                                                                                                                                                                                                                                                                          | <a href="#">22841</a> ; | <a href="#">Q7L804</a> ; |
| Cellular Localization | Cell projection, phagocytic cup . Cell membrane; Peripheral membrane protein. Recycling endosome membrane; Peripheral membrane protein. Translocates with RAB11A from the vesicles of the endocytic recycling compartment (ERC) to the plasma membrane.                                                                                                                                                                                                                                                                                                                                                                                                                                                                                                                                                                                        |                         |                          |
| Tissue specificity    | Brain,                                                                                                                                                                                                                                                                                                                                                                                                                                                                                                                                                                                                                                                                                                                                                                                                                                         |                         |                          |
| Function              | Function:A Rab11 effector protein acting in the regulation of the transport of vesicles from the endosomal recycling compartment (ERC) to the plasma membrane. Also involved in receptor-mediated endocytosis and membrane trafficking of recycling endosomes, probably originating from clathrin-coated vesicles. Binds preferentially to phosphatidylinositol 3,4,5-trisphosphate (PtdInsP3) and phosphatidic acid (PA).,similarity:Contains 1 C2 domain.,subcellular location:Translocates with RAB11A from the vesicles of the endocytic recycling compartment (ERC) to the plasma membrane.,subunit:Homooligomerizes in a Rab11-independent manner. Forms an heterooligomeric complex with RAB11FIP4. Interacts with AP2A1, MYO5B, RAB11A, RAB11B, RAB25 and REPS1. Interacts with RAB11A/RAB11B that has been activated by GTP binding., |                         |                          |

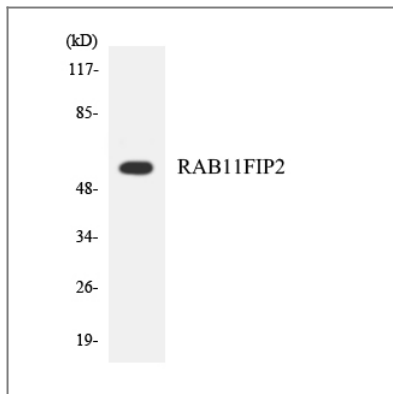
Validation Data



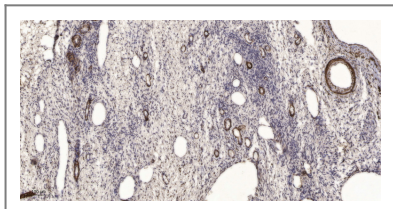
Western Blot analysis of MCF-7 cells using Rab11-FIP2 Polyclonal Antibody



Western blot analysis of lysates from MCF-7, HUVEC, A549, and COLO cells, using RAB11FIP2 Antibody. The lane on the right is blocked with the synthesized peptide.



Western blot analysis of the lysates from HepG2 cells using RAB11FIP2 antibody.



Immunohistochemical analysis of paraffin-embedded human oophoroma. 1, Antibody was diluted at 1:200(4° overnight). 2, Tris-EDTA,pH9.0 was used for antigen retrieval. 3,Secondary antibody was diluted at 1:200(room temperature, 45min).

## Contact information

Orders: [order@immunoway.com](mailto:order@immunoway.com)  
 Support: [tech@immunoway.com](mailto:tech@immunoway.com)  
 Telephone: 877-594-3616 (Toll Free), 408-747-0185  
 Website: <http://www.immunoway.com>  
 Address: 2200 Ringwood Ave San Jose, CA 95131 USA



Please scan the QR code to access additional product information:  
**Rab11-FIP2 Rabbit pAb**

For Research Use Only. Not for Use in Diagnostic Procedures.

[Antibody](#) | [ELISA Kits](#) | [Protein](#) | [Reagents](#)