

Rab L2A Rabbit pAb

CatalogNo: YT3940

Key Features

Host Species

- Rabbit

Reactivity

- Human

Applications

- WB,IHC,IF,ELISA

MW

- 30-34kD (Observed)

Isotype

- IgG

Recommended Dilution Ratios

WB 1:500-1:2000

IHC 1:100-1:300

ELISA 1:20000

IF 1:50-200

Storage

Storage*

-15°C to -25°C/1 year(Do not lower than -25°C)

Formulation

Liquid in PBS containing 50% glycerol, 0.5% BSA and 0.02% sodium azide.

Basic Information

Clonality

Polyclonal

Immunogen Information

Immunogen

The antiserum was produced against synthesized peptide derived from human RABL2A. AA range:179-228

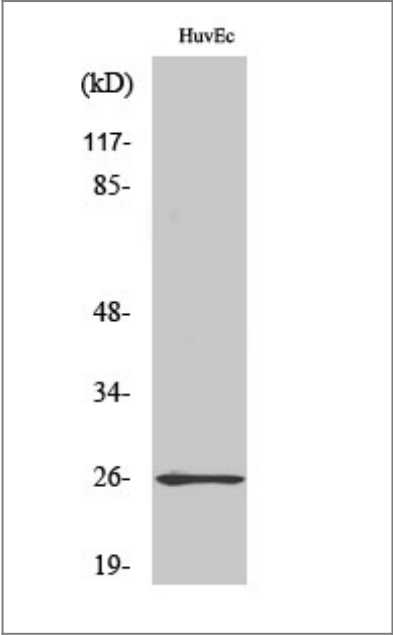
Specificity

Rab L2A Polyclonal Antibody detects endogenous levels of Rab L2A protein.

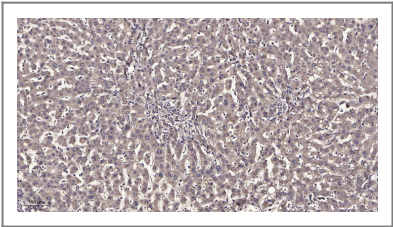
Target Information

Gene name	RABL2A		
Protein Name	Rab-like protein 2A		
	Organism	Gene ID	UniProt ID
	Human	11159 ;	Q9UBK7 ;
Cellular Localization	intracellular,		
Tissue specificity	Expressed in the testis.		
Function	similarity:Belongs to the small GTPase superfamily. Rab family.,		

| Validation Data



Western Blot analysis of COLO205 cells using Rab L2A Polyclonal Antibody diluted at 1:500



Immunohistochemical analysis of paraffin-embedded human liver cancer. 1, Antibody was diluted at 1:200(4° overnight). 2, Tris-EDTA,pH9.0 was used for antigen retrieval. 3,Secondary antibody was diluted at 1:200(room temperature, 45min).

| Contact information

Orders: order@immunoway.com
Support: tech@immunoway.com
Telephone: 877-594-3616 (Toll Free), 408-747-0185
Website: <http://www.immunoway.com>
Address: 2200 Ringwood Ave San Jose, CA 95131 USA



Please scan the QR code
to access additional
product information:
Rab L2A Rabbit pAb

For Research Use Only. Not for Use in Diagnostic Procedures.

[Antibody](#) | [ELISA Kits](#) | [Protein](#) | [Reagents](#)