

Rab 7L1 Rabbit pAb

CatalogNo: YT3939

Key Features

Host Species

- Rabbit

Reactivity

- Human, Mouse, Rat

Applications

- WB, ELISA, IHC

MW

- 28kD (Observed)

Isotype

- IgG

Recommended Dilution Ratios

WB 1:500-2000

IHC 1:50-300

ELISA 1:2000-20000

Storage

Storage* -15°C to -25°C/1 year(Do not lower than -25°C)

Formulation Liquid in PBS containing 50% glycerol, 0.5% BSA and 0.02% sodium azide.

Basic Information

Clonality Polyclonal

Immunogen Information

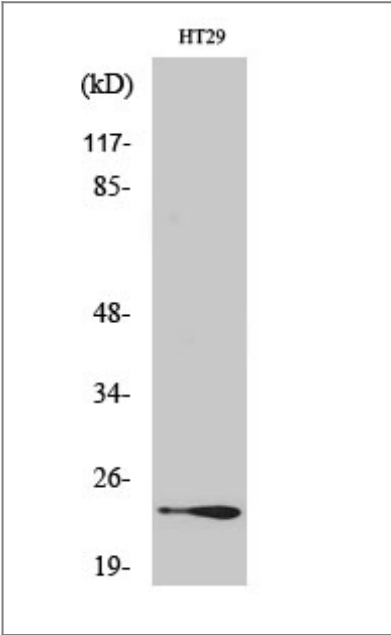
Immunogen The antiserum was produced against synthesized peptide derived from human RAB7L1. AA range:115-164

Specificity Rab 7L1 Polyclonal Antibody detects endogenous levels of Rab 7L1 protein.

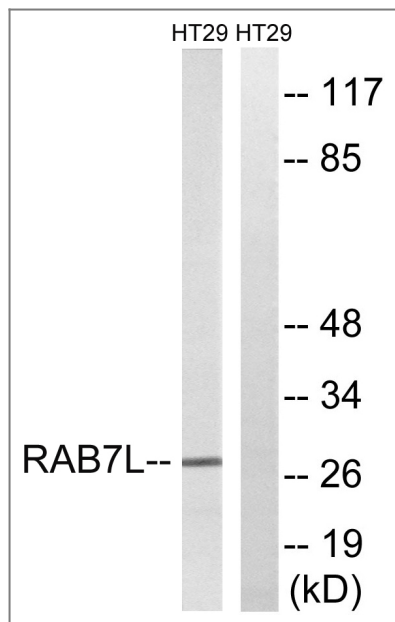
Target Information

Gene name	RAB7L1		
Protein Name	Ras-related protein Rab-7L1		
	Organism	Gene ID	UniProt ID
	Human	8934 ;	O14966 ;
	Mouse		Q91YQ1 ;
	Rat	171122 ;	Q63481 ;
Cellular Localization	Cell membrane ; Lipid-anchor ; Cytoplasmic side . Cytoplasm . Cytoplasm, perinuclear region . Golgi apparatus . Golgi apparatus, trans-Golgi network . Vacuole . Cytoplasm, cytoskeleton . Colocalizes with LRRK2 along tubular structures emerging from Golgi apparatus (PubMed:29212815). Colocalizes with GM130 at the Golgi apparatus (PubMed:22042847). Colocalizes with dynamic tubules emerging from and retracting to the Golgi apparatus (PubMed:22042847). Colocalizes with TGN46 at the trans-Golgi network (TGN) (PubMed:24788816). In Salmonella enterica serovar Typhi (S.Typhi) infected epithelial cells, is recruited and colocalized with both S.Typhi-containing vacuoles and dynamic tubules as well as those emerging from the vacuole toward the cell periphery (PubMed:22042847). .		
Tissue specificity	Ubiquitous.		
Function	similarity:Belongs to the small GTPase superfamily. Rab family.,tissue specificity:Ubiquitous.,		

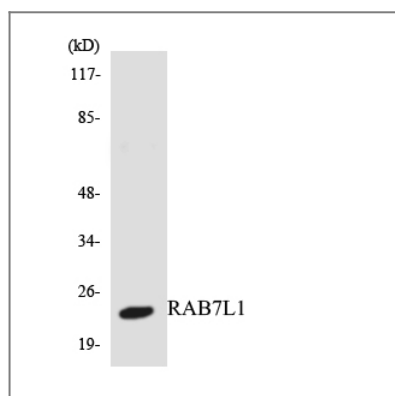
Validation Data



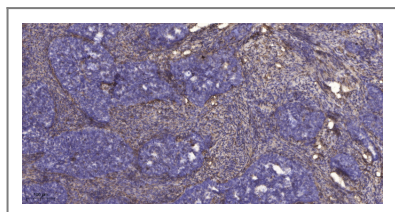
Western Blot analysis of various cells using Rab 7L1 Polyclonal Antibody



Western blot analysis of lysates from HT-29 cells, using RAB7L1 Antibody. The lane on the right is blocked with the synthesized peptide.



Western blot analysis of the lysates from HepG2 cells using RAB7L1 antibody.



Immunohistochemical analysis of paraffin-embedded human cervical carcinoma. 1, Antibody was diluted at 1:200(4° overnight). 2, Tris-EDTA,pH9.0 was used for antigen retrieval. 3,Secondary antibody was diluted at 1:200(room temperature, 45min).

Contact information

Orders: order@immunoway.com
 Support: tech@immunoway.com
 Telephone: 877-594-3616 (Toll Free), 408-747-0185
 Website: <http://www.immunoway.com>
 Address: 2200 Ringwood Ave San Jose, CA 95131 USA



Please scan the QR code to access additional product information:
Rab 7L1 Rabbit pAb