

## Rab 6A Rabbit pAb

CatalogNo: YT3937

### Key Features

#### Host Species

- Rabbit

#### Reactivity

- Human, Mouse, Rat

#### Applications

- WB, IHC, IF, ELISA

#### MW

- 24kD (Observed)

#### Isotype

- IgG

### Recommended Dilution Ratios

**WB 1:500-1:2000**

**IHC 1:100-1:300**

**ELISA 1:20000**

**IF 1:50-200**

### Storage

**Storage\*** -15°C to -25°C/1 year (Do not lower than -25°C)

**Formulation** Liquid in PBS containing 50% glycerol, 0.5% BSA and 0.02% sodium azide.

### Basic Information

**Clonality** Polyclonal

### Immunogen Information

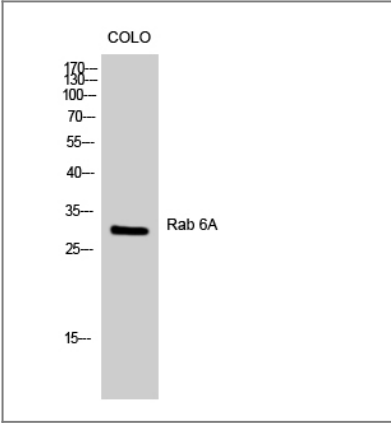
**Immunogen** The antiserum was produced against synthesized peptide derived from human RAB6A. AA range:113-162

**Specificity** Rab 6A Polyclonal Antibody detects endogenous levels of Rab 6A protein.

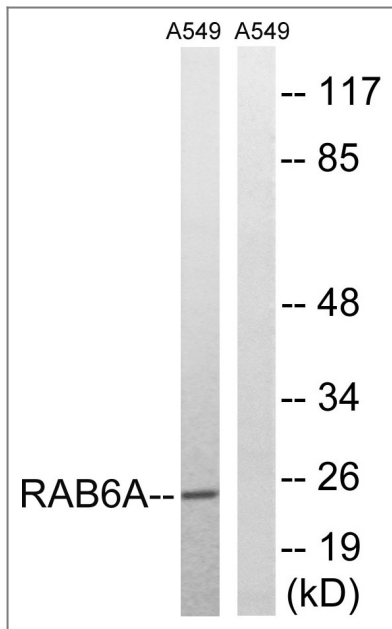
### Target Information

Gene name	RAB6A		
Protein Name	Ras-related protein Rab-6A		
	Organism	Gene ID	UniProt ID
	Human	<a href="#">5870</a> ;	<a href="#">P20340</a> ;
	Mouse	<a href="#">19346</a> ;	<a href="#">P35279</a> ;
	Rat		<a href="#">Q9WVB1</a> ;
Cellular Localization	Golgi apparatus membrane ; Lipid-anchor . BICD2 facilitates its targeting to Golgi apparatus membrane. .; [Isoform 1]: Golgi apparatus membrane ; Lipid-anchor .; [Isoform 2]: Golgi apparatus membrane ; Lipid-anchor .		
Tissue specificity	Ubiquitous.		
Function	Function:Protein transport. Regulator of membrane traffic from the Golgi apparatus towards the endoplasmic reticulum (ER). Has a low GTPase activity.,PTM:Phosphorylated upon DNA damage, probably by ATM or ATR.,similarity:Belongs to the small GTPase superfamily. Rab family.,subunit:Interacts with SCYL1BP1. Interacts with VSP52 and RABGAP1. Isoform 1 interacts with RAB6KIFL but not isoform 2. Isoforms 1 and 2 interact with BICD1 and BICD2. Interacts with TMF1.,tissue specificity:Ubiquitous.,		

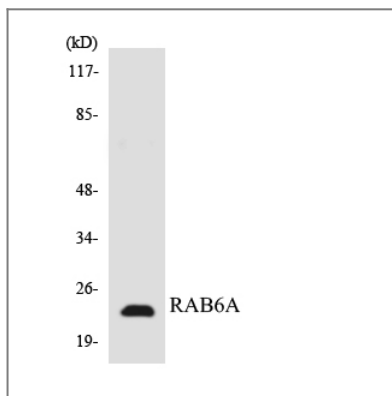
| Validation Data



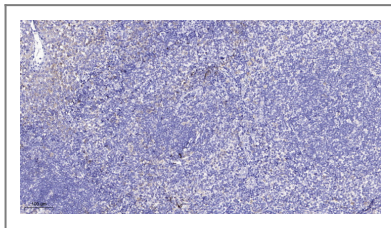
Western Blot analysis of COLO cells using Rab 6A Polyclonal Antibody diluted at 1:1000



Western blot analysis of lysates from A549 cells, using RAB6A Antibody. The lane on the right is blocked with the synthesized peptide.



Western blot analysis of the lysates from HT-29 cells using RAB6A antibody.



Immunohistochemical analysis of paraffin-embedded human tonsil. 1, Antibody was diluted at 1:200(4° overnight). 2, Tris-EDTA,pH9.0 was used for antigen retrieval. 3,Secondary antibody was diluted at 1:200(room temperature, 30min).

## | Contact information

Orders: [order@immunoway.com](mailto:order@immunoway.com)  
Support: [tech@immunoway.com](mailto:tech@immunoway.com)  
Telephone: 877-594-3616 (Toll Free), 408-747-0185  
Website: <http://www.immunoway.com>  
Address: 2200 Ringwood Ave San Jose, CA 95131 USA



Please scan the QR code to access additional product information:  
**Rab 6A Rabbit pAb**