

Rab 5C Rabbit pAb

CatalogNo: YT3936

Key Features

Host Species

- Rabbit

Reactivity

- Human, Mouse, Rat

Applications

- WB, IHC, IF, ELISA

MW

- 30kD (Observed)

Isotype

- IgG

Recommended Dilution Ratios

WB 1:500-1:2000

IHC 1:100-1:300

ELISA 1:5000

IF 1:50-200

Storage

Storage* -15°C to -25°C/1 year (Do not lower than -25°C)

Formulation Liquid in PBS containing 50% glycerol, 0.5% BSA and 0.02% sodium azide.

Basic Information

Clonality Polyclonal

Immunogen Information

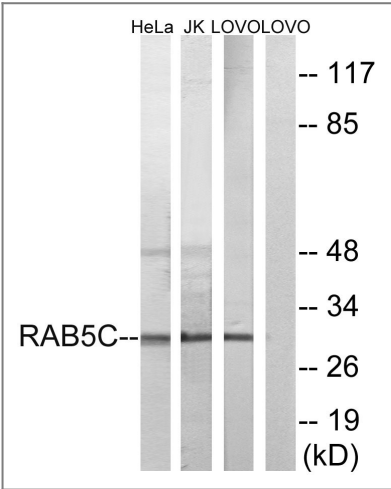
Immunogen The antiserum was produced against synthesized peptide derived from human RAB5C. AA range:122-171

Specificity Rab 5C Polyclonal Antibody detects endogenous levels of Rab 5C protein.

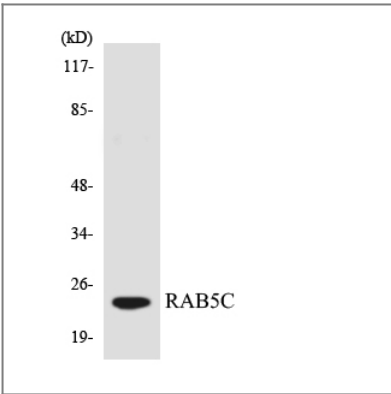
Target Information

Gene name	RAB5C		
Protein Name	Ras-related protein Rab-5C		
	Organism	Gene ID	UniProt ID
	Human	5878 ;	P51148 ;
	Mouse	19345 ;	P35278 ;
Cellular Localization	Cell membrane ; Lipid-anchor ; Cytoplasmic side . Early endosome membrane ; Lipid-anchor . Melanosome . Identified by mass spectrometry in melanosome fractions from stage I to stage IV. .		
Tissue specificity	Brain,Lung,		
Function	Function:Protein transport. Probably involved in vesicular traffic.,similarity:Belongs to the small GTPase superfamily. Rab family.,subcellular location:Identified by mass spectrometry in melanosome fractions from stage I to stage IV.,subunit:Binds EEA1.,		

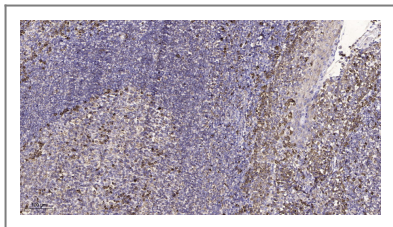
| Validation Data



Western blot analysis of lysates from LOVO, HeLa, and Jurkat cells, using RAB5C Antibody. The lane on the right is blocked with the synthesized peptide.



Western blot analysis of the lysates from 293 cells using RAB5C antibody.



Immunohistochemical analysis of paraffin-embedded human tonsil. 1, Antibody was diluted at 1:200(4° overnight). 2, Tris-EDTA,pH9.0 was used for antigen retrieval. 3,Secondary antibody was diluted at 1:200(room temperature, 45min).

| Contact information

Orders: order@immunoway.com
Support: tech@immunoway.com
Telephone: 877-594-3616 (Toll Free), 408-747-0185
Website: <http://www.immunoway.com>
Address: 2200 Ringwood Ave San Jose, CA 95131 USA



Please scan the QR code
to access additional
product information:
Rab 5C Rabbit pAb

For Research Use Only. Not for Use in Diagnostic Procedures.

[Antibody](#) | [ELISA Kits](#) | [Protein](#) | [Reagents](#)