

## Rab 33A Rabbit pAb

CatalogNo: YT3929

### Key Features

#### Host Species

- Rabbit

#### Reactivity

- Human, Mouse, Rat

#### Applications

- WB, ELISA, IHC

#### MW

- 27kD (Observed)

#### Isotype

- IgG

### Recommended Dilution Ratios

**WB 1:500-2000**

**IHC 1:50-300**

**ELISA 1:2000-20000**

### Storage

**Storage\*** -15°C to -25°C/1 year (Do not lower than -25°C)

**Formulation** Liquid in PBS containing 50% glycerol, 0.5% BSA and 0.02% sodium azide.

### Basic Information

**Clonality** Polyclonal

### Immunogen Information

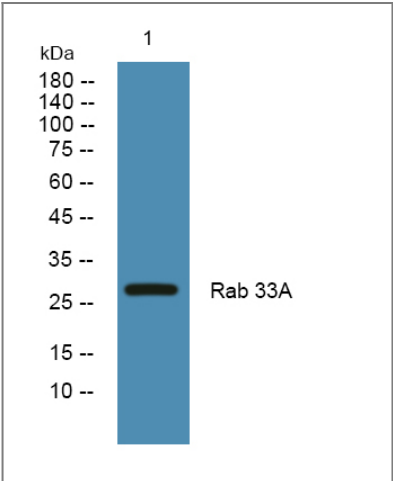
**Immunogen** The antiserum was produced against synthesized peptide derived from human RAB33A. AA range:132-181

**Specificity** Rab 33A Polyclonal Antibody detects endogenous levels of Rab 33A protein.

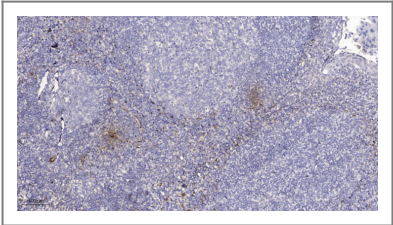
### Target Information

Gene name	RAB33A		
Protein Name	Ras-related protein Rab-33A		
	Organism	Gene ID	UniProt ID
	Human	<a href="#">9363</a> ;	<a href="#">Q14088</a> ;
	Mouse	<a href="#">19337</a> ;	<a href="#">P97950</a> ;
Cellular Localization	Cell membrane ; Lipid-anchor ; Cytoplasmic side .		
Tissue specificity	Expressed only in lymphoid cell lines.		
Function	similarity:Belongs to the small GTPase superfamily. Rab family.,tissue specificity:Expressed only in lymphoid cell lines.,		

Validation Data



Western blot analysis of lysates from SH-SY5Y cells, primary antibody was diluted at 1:1000, 4°over night



Immunohistochemical analysis of paraffin-embedded human tonsil. 1, Antibody was diluted at 1:200(4° overnight). 2, Tris-EDTA,pH9.0 was used for antigen retrieval. 3,Secondary antibody was diluted at 1:200(room temperature, 45min).

Contact information

Orders: order@immunoway.com  
Support: tech@immunoway.com  
Telephone: 877-594-3616 (Toll Free), 408-747-0185  
Website: http://www.immunoway.com  
Address: 2200 Ringwood Ave San Jose, CA 95131 USA



Please scan the QR code  
to access additional  
product information:  
**Rab 33A Rabbit pAb**

---

For Research Use Only. Not for Use in Diagnostic Procedures.

[Antibody](#) | [ELISA Kits](#) | [Protein](#) | [Reagents](#)