

Rab 3 GAP p130 Rabbit pAb

CatalogNo: YT3926

Key Features

Host Species

- Rabbit

Reactivity

- Human,Rat,Mouse,

Applications

- WB,IHC,IF,ELISA

MW

- 117kD (Observed)

Isotype

- IgG

Recommended Dilution Ratios

WB 1:500-1:2000

IHC 1:100-1:300

ELISA 1:40000

IF 1:50-200

Storage

Storage*

-15°C to -25°C/1 year(Do not lower than -25°C)

Formulation

Liquid in PBS containing 50% glycerol, 0.5% BSA and 0.02% sodium azide.

Basic Information

Clonality

Polyclonal

Immunogen Information

Immunogen

The antiserum was produced against synthesized peptide derived from human RAB3GAP1. AA range:538-587

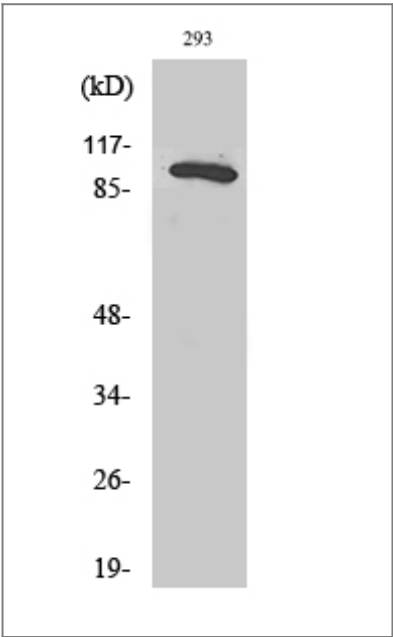
Specificity

Rab 3 GAP p130 Polyclonal Antibody detects endogenous levels of Rab 3 GAP p130 protein.

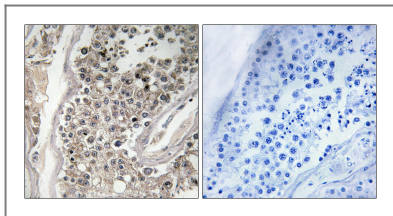
Target Information

| | | | |
|-----------------------|---|-------------------------|--------------------------|
| Gene name | RAB3GAP1 | | |
| Protein Name | Rab3 GTPase-activating protein catalytic subunit | | |
| | Organism | Gene ID | UniProt ID |
| | Human | 22930 ; | Q15042 ; |
| | Mouse | | Q80UJ7 ; |
| Cellular Localization | Cytoplasm . In neurons, it is enriched in the synaptic soluble fraction. | | |
| Tissue specificity | Ubiquitous. | | |
| Function | Disease:Defects in RAB3GAP1 are the cause of Warburg micro syndrome 1 (WARBM1) [MIM:600118]. WARBM1 is a severe autosomal recessive disorder characterized by developmental abnormalities of the eye and central nervous system and by microgenitalia.,Function:Probable catalytic subunit of a GTPase activating protein that has specificity for Rab3 subfamily (RAB3A, RAB3B, RAB3C and RAB3D). Rab3 proteins are involved in regulated exocytosis of neurotransmitters and hormones. Specifically converts active Rab3-GTP to the inactive form Rab3-GDP. Required for normal eye and brain development. May participate in neurodevelopmental processes such as proliferation, migration and differentiation before synapse formation, and non-synaptic vesicular release of neurotransmitters.,similarity:Belongs to the Rab3-GAP catalytic subunit family.,subcellular location:In neurons, it is enriched in the synaptic soluble fraction.,subunit:The Rab3 GTPase-activating complex is a heterodimer composed of RAB3GAP and RAB3-GAP150. The Rab3 GTPase-activating complex interacts with DMXL2.,tissue specificity:Ubiquitous., | | |

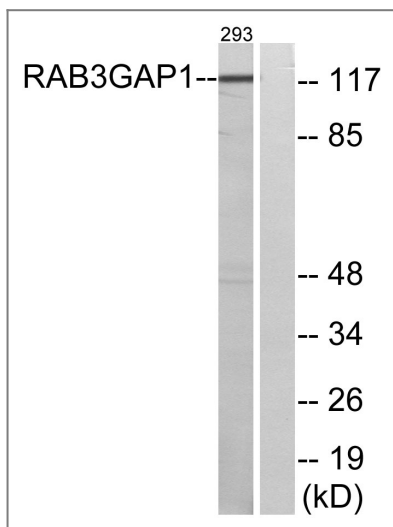
Validation Data



Western Blot analysis of various cells using Rab 3 GAP p130 Polyclonal Antibody diluted at 1:2000



Immunohistochemistry analysis of paraffin-embedded human testis tissue, using RAB3GAP1 Antibody. The picture on the right is blocked with the synthesized peptide.



Western blot analysis of lysates from 293 cells, using RAB3GAP1 Antibody. The lane on the right is blocked with the synthesized peptide.

Contact information

Orders: order@immunoway.com
 Support: tech@immunoway.com
 Telephone: 877-594-3616 (Toll Free), 408-747-0185
 Website: <http://www.immunoway.com>
 Address: 2200 Ringwood Ave San Jose, CA 95131 USA



Please scan the QR code to access additional product information:
Rab 3 GAP p130
Rabbit pAb

For Research Use Only. Not for Use in Diagnostic Procedures.

[Antibody](#) | [ELISA Kits](#) | [Protein](#) | [Reagents](#)