

Rab 11B Rabbit pAb

CatalogNo: YT3919

Key Features

Host Species

- Rabbit

Reactivity

- Human, Mouse, Rat

Applications

- WB, IHC

MW

- 28kD (Observed)

Isotype

- IgG

Recommended Dilution Ratios

WB 1:500-2000

IHC 1:50-300

Storage

Storage* -15°C to -25°C/1 year (Do not lower than -25°C)

Formulation Liquid in PBS containing 50% glycerol, 0.5% BSA and 0.02% sodium azide.

Basic Information

Clonality Polyclonal

Immunogen Information

Immunogen The antiserum was produced against synthesized peptide derived from human RAB11B. AA range: 164-213

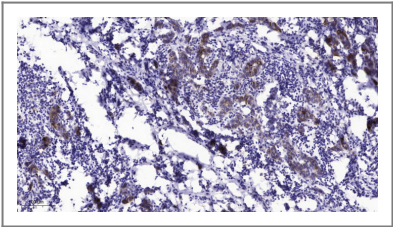
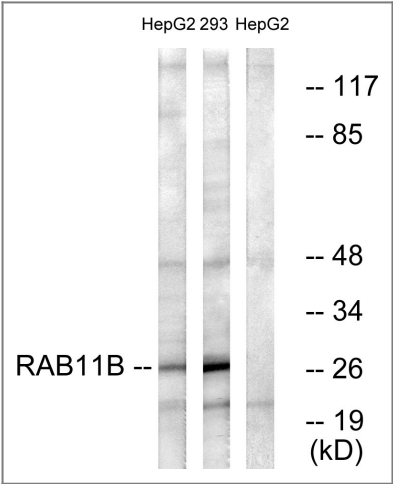
Specificity Rab 11B Polyclonal Antibody detects endogenous levels of Rab 11B protein.

Target Information

Gene name RAB11B

Protein Name	Ras-related protein Rab-11B		
	Organism	Gene ID	UniProt ID
	Human	9230;	Q15907;
	Mouse	19326;	P46638;
	Rat	79434;	O35509;
Cellular Localization	Recycling endosome membrane ; Lipid-anchor ; Cytoplasmic side . Cytoplasmic vesicle, secretory vesicle, synaptic vesicle membrane ; Lipid-anchor ; Cytoplasmic side . Cytoplasmic vesicle, phagosome membrane ; Lipid-anchor ; Cytoplasmic side . Recruited to phagosomes containing S.aureus. .		
Tissue specificity	B-cell lymphoma,Brain,Cerebellum,Muscle,		
Function	Function:Possesses GTPase activity.,similarity:Belongs to the small GTPase superfamily. Rab family.,subunit:Interacts with RAB11FIP1, RAB11FIP2, RAB11FIP3 and RAB11FIP4.,		

| Validation Data



Immunohistochemical analysis of paraffin-embedded human Breast cancer. 1, Antibody was diluted at 1:200(4° overnight). 2, Tris-EDTA,pH9.0 was used for antigen retrieval. 3,Secondary antibody was diluted at 1:200(room temperature, 45min).

| Contact information

Orders: order@immunoway.com
Support: tech@immunoway.com
Telephone: 877-594-3616 (Toll Free), 408-747-0185
Website: <http://www.immunoway.com>
Address: 2200 Ringwood Ave San Jose, CA 95131 USA



Please scan the QR code
to access additional
product information:
Rab 11B Rabbit pAb

For Research Use Only. Not for Use in Diagnostic Procedures.

[Antibody](#) | [ELISA Kits](#) | [Protein](#) | [Reagents](#)