

QSK Rabbit pAb

CatalogNo: YT3918

Key Features

Host Species

- Rabbit

Reactivity

- Human, Mouse

Applications

- WB, IHC, IF, ELISA

MW

- 140kD (Observed)

Isotype

- IgG

Recommended Dilution Ratios

WB 1:500-1:2000

IHC 1:100-1:300

ELISA 1:40000

IF 1:50-200

Storage

Storage* -15°C to -25°C/1 year (Do not lower than -25°C)

Formulation Liquid in PBS containing 50% glycerol, 0.5% BSA and 0.02% sodium azide.

Basic Information

Clonality Polyclonal

Immunogen Information

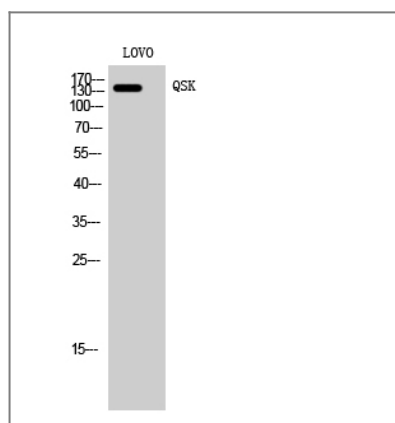
Immunogen The antiserum was produced against synthesized peptide derived from human QSK. AA range: 521-570

Specificity QSK Polyclonal Antibody detects endogenous levels of QSK protein.

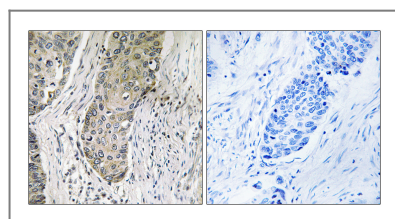
Target Information

Gene name	SIK3		
Protein Name	Serine/threonine-protein kinase SIK3		
	Organism	Gene ID	UniProt ID
	Human	23387;	Q9Y2K2;
	Mouse	70661;	Q6P4S6;
Cellular Localization	Cytoplasm . Locates to punctate structures within the cytoplasm on binding to YWHAZ. .		
Tissue specificity	Expressed in chondrocytes.		
Function	similarity:Belongs to the protein kinase superfamily.,		

Validation Data



Western Blot analysis of LOVO cells using QSK Polyclonal Antibody



Immunohistochemistry analysis of paraffin-embedded human lung carcinoma tissue, using QSK Antibody. The picture on the right is blocked with the synthesized peptide.

Contact information

Orders: order@immunoway.com
 Support: tech@immunoway.com
 Telephone: 877-594-3616 (Toll Free), 408-747-0185
 Website: <http://www.immunoway.com>
 Address: 2200 Ringwood Ave San Jose, CA 95131 USA



Please scan the QR code
 to access additional
 product information:
QSK Rabbit pAb

