

QM Rabbit pAb

CatalogNo: YT3916 **Orthogonal Validated** 

Key Features

Host Species

- Rabbit

Reactivity

- Human, Mouse, Rat, Cat

Applications

- WB, IHC

MW

- 25kD (Observed)

Isotype

- IgG

Storage

Storage* -15°C to -25°C/1 year (Do not lower than -25°C)**Formulation** Liquid in PBS containing 50% glycerol, 0.5% BSA and 0.02% sodium azide.

Recommended Dilution Ratios

WB 1:500-2000**IHC 1:50-300**

Basic Information

Clonality Polyclonal

Immunogen Information

Immunogen The antiserum was produced against synthesized peptide derived from human 60S Ribosomal Protein L10. AA range:1-50**Specificity** QM Polyclonal Antibody detects endogenous levels of QM protein.

Target Information

Gene name RPL10

Protein Name 60S ribosomal protein L10

| Organism | Gene ID | UniProt ID |
|----------|-------------------------|-------------------------|
| Human | 6134; | P27635; |
| Mouse | 110954; | Q6ZWW3; |
| Rat | 81764; | Q6PDV7; |

Cellular Localization

endoplasmic reticulum,cytosol,ribosome,membrane,cytosolic large ribosomal subunit,

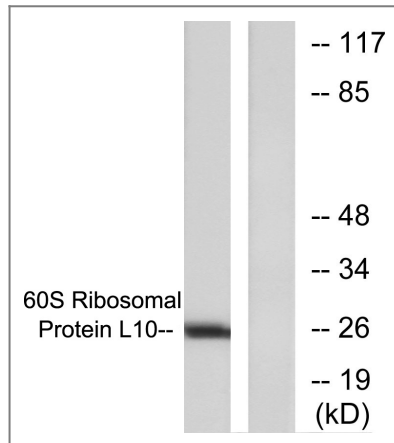
Tissue specificity

Brain,Human lung,Mammary cancer,Mammary gland,Ovarian carcinoma,Pancreatic cancer,P

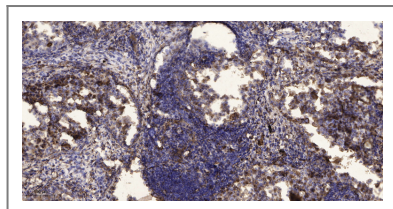
Function

developmental stage:Down-regulated during adipocyte, kidney, and heart differentiation.,Disease:Defects in RPL10 may be the cause of susceptibility to X-linked autism [MIM:209850]. Autism is a pervasive developmental disorder (PDD), prototypically characterized by impairments in reciprocal social interaction and communication, restricted and stereotyped patterns of interests and activities, and the presence of developmental abnormalities by 3 years of age.,similarity:Belongs to the ribosomal protein L10e family.,

Validation Data



Western blot analysis of lysates from K562 cells, treated with Insulin 0.01u/ml 15min, using 60S Ribosomal Protein L10 Antibody. The lane on the right is blocked with the synthesized peptide.



Immunohistochemical analysis of paraffin-embedded human Squamous cell carcinoma of lung. 1, Antibody was diluted at 1:200(4° overnight). 2, Tris-EDTA,pH9.0 was used for antigen retrieval. 3,Secondary antibody was diluted at 1:200(room temperature, 45min).

Contact information

Orders: order@immunoway.com
Support: tech@immunoway.com
Telephone: 877-594-3616 (Toll Free), 408-747-0185
Website: http://www.immunoway.com
Address: 2200 Ringwood Ave San Jose, CA 95131 USA



Please scan the QR code
to access additional
product information:
QM Rabbit pAb

For Research Use Only. Not for Use in Diagnostic Procedures.

[Antibody](#) | [ELISA Kits](#) | [Protein](#) | [Reagents](#)