

PTP ζ Rabbit pAb

CatalogNo: YT3903

Key Features

Host Species

- Rabbit

Reactivity

- Human, Mouse, Rat

Applications

- WB, ELISA, IHC

MW

- 250kD (Observed)

Isotype

- IgG

Recommended Dilution Ratios

WB 1:500-2000

IHC 1:50-300

ELISA 1:2000-20000

Storage

Storage* -15°C to -25°C/1 year (Do not lower than -25°C)

Formulation Liquid in PBS containing 50% glycerol, 0.5% BSA and 0.02% sodium azide.

Basic Information

Clonality Polyclonal

Immunogen Information

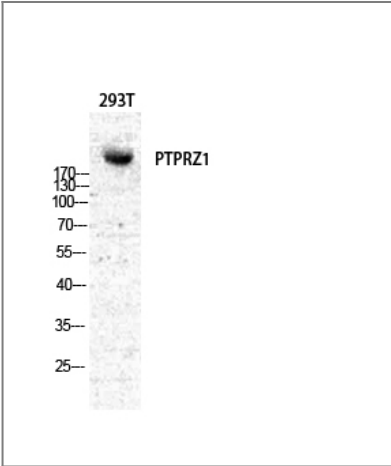
Immunogen The antiserum was produced against synthesized peptide derived from human PTPRZ1. AA range:122-171

Specificity PTP ζ Polyclonal Antibody detects endogenous levels of PTP ζ protein.

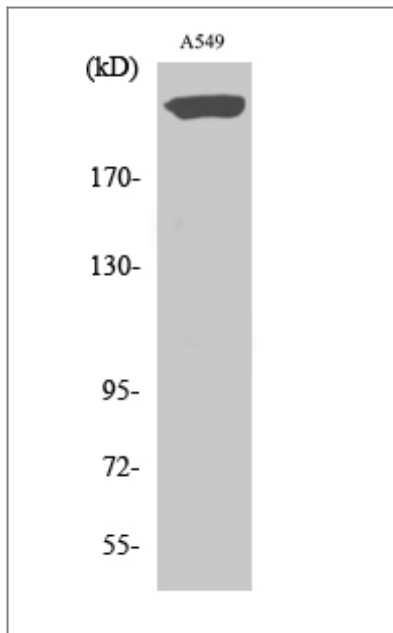
Target Information

Gene name	PTPRZ1		
Protein Name	Receptor-type tyrosine-protein phosphatase zeta		
	Organism	Gene ID	UniProt ID
	Human	5803 ;	P23471 ;
	Rat	25613 ;	Q62656 ;
Cellular Localization	[Isoform 1]: Cell membrane; Single-pass type I membrane protein. Secreted . A secreted form is apparently generated by shedding of the extracellular domain. .; [Isoform 2]: Secreted .		
Tissue specificity	Specifically expressed in the central nervous system, where it is localized in the Purkinje cell layer of the cerebellum, the dentate gyrus, and the subependymal layer of the anterior horn of the lateral ventricle. Developmentally regulated in the brain.		
Function	Catalytic activity:Protein tyrosine phosphate + H(2)O = protein tyrosine + phosphate.,Caution:PubMed:8387522 and PubMed:2170109 have termed this protein RPTPase beta.,Function:May be involved in the regulation of specific developmental processes in the CNS.,sequence Caution:Contaminating sequence. The N-terminus may be contaminated with vector sequence.,similarity:Belongs to the protein-tyrosine phosphatase family. Receptor class 5 subfamily.,similarity:Contains 1 alpha-carbonic anhydrase domain.,similarity:Contains 1 fibronectin type-III domain.,similarity:Contains 2 tyrosine-protein phosphatase domains.,subunit:The carbonic-anhydrase like domain binds to contactin.,tissue specificity:Specifically expressed in the central nervous system, where it is localized in the Purkinje cell layer of the cerebellum, the dentate gyrus, and the subependymal layer of the anterior horn of the lateral ventricle. Developmentally regulated in the brain.,		

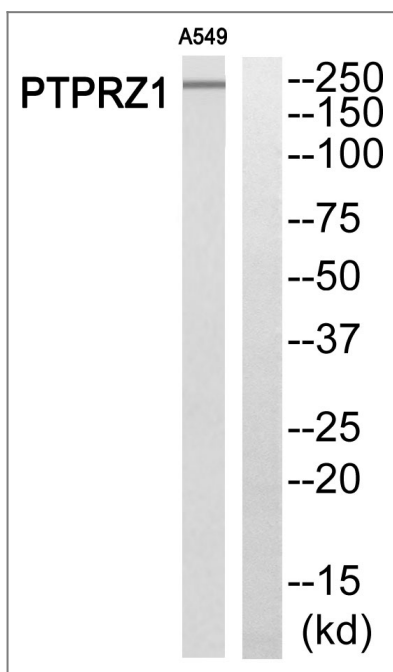
| Validation Data



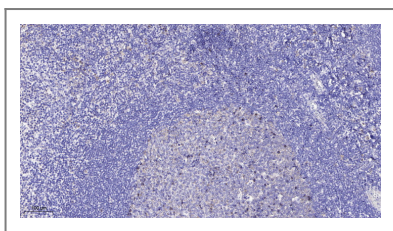
Western Blot analysis of various cells using PTPζ Polyclonal Antibody diluted at 1:500



Western Blot analysis of A549 cells using PTP ζ Polyclonal Antibody diluted at 1:500



Western blot analysis of PTPRZ1 Antibody. The lane on the right is blocked with the PTPRZ1 peptide.



Immunohistochemical analysis of paraffin-embedded human tonsil. 1, Antibody was diluted at 1:200(4° overnight). 2, Tris-EDTA,pH9.0 was used for antigen retrieval. 3,Secondary antibody was diluted at 1:200(room temperature, 45min).

Contact information

Orders: order@immunoway.com
 Support: tech@immunoway.com
 Telephone: 877-594-3616 (Toll Free), 408-747-0185
 Website: <http://www.immunoway.com>
 Address: 2200 Ringwood Ave San Jose, CA 95131 USA



Please scan the QR code to access additional product information:
PTP ζ Rabbit pAb

