

## PTP22 Rabbit pAb

CatalogNo: YT3901

### Key Features

#### Host Species

- Rabbit

#### Reactivity

- Human, Mouse, Rat

#### Applications

- WB, IHC

#### MW

- 91kD (Observed)

#### Isotype

- IgG

### Recommended Dilution Ratios

WB 1:500-2000

IHC 1:50-300

### Storage

**Storage\*** -15°C to -25°C/1 year (Do not lower than -25°C)

**Formulation** Liquid in PBS containing 50% glycerol, 0.5% BSA and 0.02% sodium azide.

### Basic Information

**Clonality** Polyclonal

### Immunogen Information

**Immunogen** Synthesized peptide derived from the N-terminal region of human PTP22.

**Specificity** PTP22 Polyclonal Antibody detects endogenous levels of PTP22 protein.

### Target Information

**Gene name** PTPN22

**Protein Name** Tyrosine-protein phosphatase non-receptor type 22

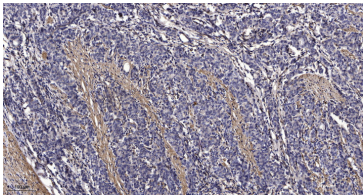
Organism	Gene ID	UniProt ID
Human	<a href="#">26191;</a>	<a href="#">Q9Y2R2;</a>
Mouse	<a href="#">19260;</a>	<a href="#">P29352;</a>

**Cellular Localization** Cytoplasm .

**Tissue specificity** Expressed in bone marrow, B and T-cells, PBMCs, natural killer cells, monocytes, dendritic cells and neutrophils (PubMed:15208781). Both isoform 1 and 4 are predominantly expressed in lymphoid tissues and cells. Isoform 1 is expressed in thymocytes and both mature B and T-cells.

**Function** Catalytic activity:Protein tyrosine phosphate + H(2)O = protein tyrosine + phosphate.,Function:Seems to act on Cbl. May play a role in regulating the function of Cbl and its associated protein kinases.,similarity:Belongs to the protein-tyrosine phosphatase family. Non-receptor class 4 subfamily.,similarity:Contains 1 tyrosine-protein phosphatase domain.,tissue specificity:Predominantly expressed in lymphoid tissues and cells. Isoform 1 is expressed in thymocytes and both mature B and T-cells.,

## Validation Data



Immunohistochemical analysis of paraffin-embedded human Gastric adenocarcinoma. 1, Antibody was diluted at 1:200(4° overnight). 2, Tris-EDTA,pH9.0 was used for antigen retrieval. 3,Secondary antibody was diluted at 1:200(room temperature, 45min).

## Contact information

Orders: [order@immunoway.com](mailto:order@immunoway.com)  
Support: [tech@immunoway.com](mailto:tech@immunoway.com)  
Telephone: 877-594-3616 (Toll Free), 408-747-0185  
Website: <http://www.immunoway.com>  
Address: 2200 Ringwood Ave San Jose, CA 95131 USA



Please scan the QR code to access additional product information:  
**PTP22 Rabbit pAb**