

PSMD12 Rabbit pAb

CatalogNo: YT3887

| Key Features

Host Species

- Rabbit

Reactivity

- Human, Mouse, Rat

Applications

- WB, IHC, IF, ELISA

MW

- 50kD (Observed)

Isotype

- IgG

| Recommended Dilution Ratios

WB 1:500-1:2000

IHC 1:100-1:300

ELISA 1:40000

IF 1:50-200

| Storage

Storage*

-15°C to -25°C/1 year (Do not lower than -25°C)

Formulation

Liquid in PBS containing 50% glycerol, 0.5% BSA and 0.02% sodium azide.

| Basic Information

Clonality

Polyclonal

| Immunogen Information

Immunogen

The antiserum was produced against synthesized peptide derived from human PSMD12. AA range: 151-200

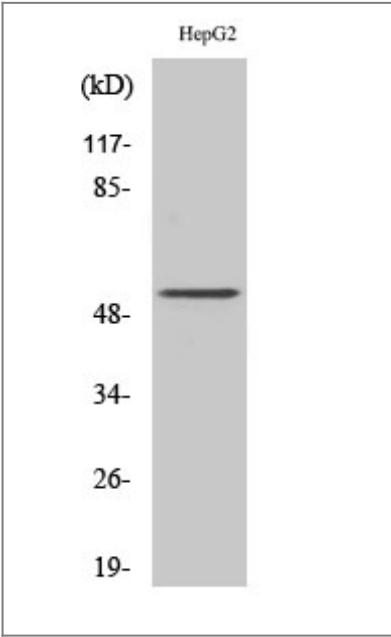
Specificity

PSMD12 Polyclonal Antibody detects endogenous levels of PSMD12 protein.

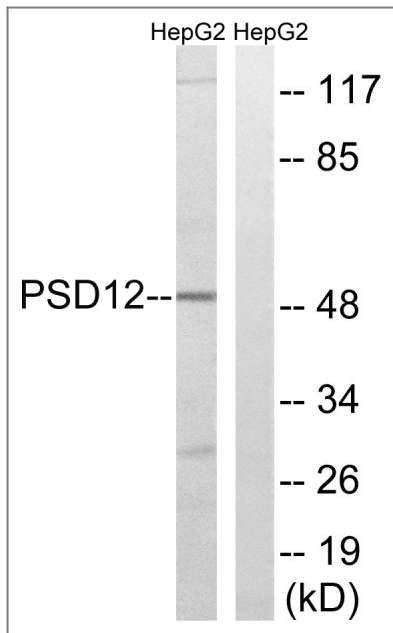
| Target Information

Gene name	PSMD12		
Protein Name	26S proteasome non-ATPase regulatory subunit 12		
	Organism	Gene ID	UniProt ID
	Human	5718;	O00232;
	Mouse	66997;	Q9D8W5;
Cellular Localization	proteasome complex,nucleoplasm,cytoplasm,cytosol,proteasome regulatory particle,proteasome regulatory particle, lid subcomplex,membrane,proteasome accessory complex,nuclear proteasome complex,extracellular exosome,		
Tissue specificity	Brain,Muscle,Platelet,Testis,Tongue,		
Function	Function:Acts as a regulatory subunit of the 26S proteasome which is involved in the ATP-dependent degradation of ubiquitinated proteins.,similarity:Belongs to the proteasome subunit p55 family.,similarity:Contains 1 PCI domain.,subunit:Component of the PA700 complex.,		

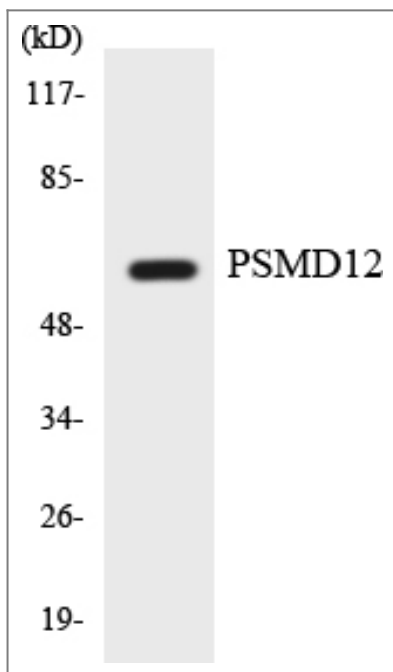
| Validation Data



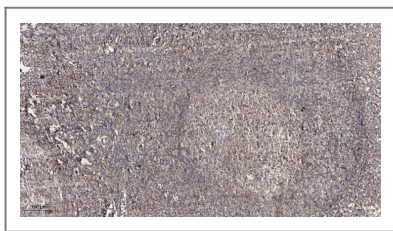
Western Blot analysis of HepG2 cells using PSMD12 Polyclonal Antibody



Western blot analysis of lysates from HepG2 cells, using PSMD12 Antibody. The lane on the right is blocked with the synthesized peptide.



Western blot analysis of the lysates from HT-29 cells using PSMD12 antibody.



Immunohistochemical analysis of paraffin-embedded human tonsil. 1, Antibody was diluted at 1:200(4° overnight). 2, Tris-EDTA,pH9.0 was used for antigen retrieval. 3,Secondary antibody was diluted at 1:200(room temperature, 30min).

Contact information

Orders: order@immunoway.com
 Support: tech@immunoway.com
 Telephone: 877-594-3616 (Toll Free), 408-747-0185
 Website: <http://www.immunoway.com>
 Address: 2200 Ringwood Ave San Jose, CA 95131 USA



Please scan the QR code to access additional product information:
PSMD12 Rabbit pAb

