

PSK-H1 Rabbit pAb

CatalogNo: YT3883

Key Features

Host Species

- Rabbit

Reactivity

- Human, Mouse

Applications

- WB, IHC, IF, ELISA

MW

- 48kD (Observed)

Isotype

- IgG

Recommended Dilution Ratios

WB 1:500-1:2000

IHC 1:100-1:300

ELISA 1:20000

IF 1:50-200

Storage

Storage*

-15°C to -25°C/1 year (Do not lower than -25°C)

Formulation

Liquid in PBS containing 50% glycerol, 0.5% BSA and 0.02% sodium azide.

Basic Information

Clonality

Polyclonal

Immunogen Information

Immunogen

The antiserum was produced against synthesized peptide derived from human KPSH1. AA range: 261-310

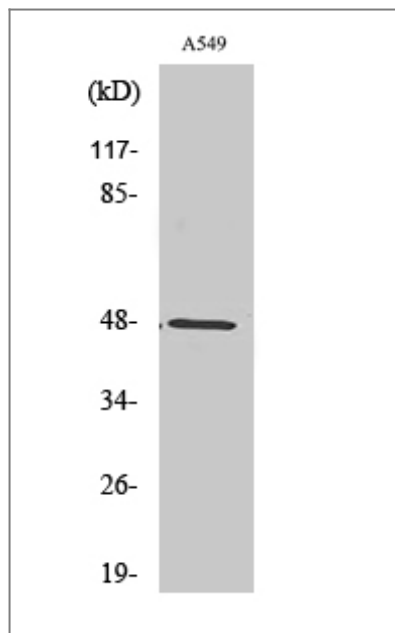
Specificity

PSK-H1 Polyclonal Antibody detects endogenous levels of PSK-H1 protein.

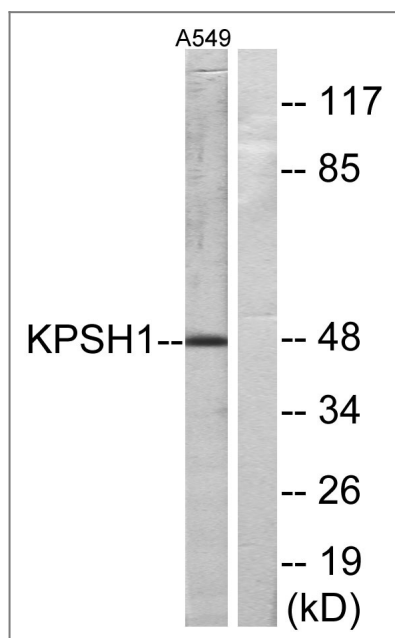
Target Information

Gene name	PSKH1		
Protein Name	Serine/threonine-protein kinase H1		
	Organism	Gene ID	UniProt ID
	Human	5681 ;	P11801 ;
	Mouse	244631 ;	Q91YA2 ;
Cellular Localization	Golgi apparatus. Cytoplasm, cytoskeleton, microtubule organizing center, centrosome. Nucleus speckle. Endoplasmic reticulum membrane; Lipid-anchor. Cell membrane; Lipid-anchor. Cytoplasm. Localized in the brefeldin A-sensitive Golgi compartment, at centrosomes, in the nucleus with a somewhat speckle-like presence, membrane-associated to the endoplasmic reticulum (ER) and the plasma membrane (PM), and more diffusely in the cytoplasm. Found to concentrate in splicing factor compartments (SFCs) within the nucleus of interphase cells. The acylation-negative form may be only cytoplasmic and nuclear. Acylation seems to allow the sequestering to the intracellular membranes. Myristoylation may mediate targeting to the intracellular non-Golgi membranes and palmitoylation may mediate the targeting to the Golgi membranes. Dual acylation is required to stabilize the interaction with Golgi membranes.		
Tissue specificity	Expressed in all tissues and cell lines tested with the highest level of abundance in testis.		
Function	Catalytic activity:ATP + a protein = ADP + a phosphoprotein.,enzyme regulation:Activity depends on Ca(2+) concentration.,Function:May be a SFC-associated serine kinase (splicing factor compartment-associated serine kinase) with a role in intranuclear SR protein (non-snRNP splicing factors containing a serine/arginine-rich domain) trafficking and pre-mRNA processing.,PTM:Autophosphorylated on serine residues.,PTM:Myristoylated. Required for membrane association. Prerequisite for palmitoylation to occur.,PTM:Palmitoylated.,similarity:Belongs to the protein kinase superfamily. CAMK Ser/Thr protein kinase family.,similarity:Contains 1 protein kinase domain.,subcellular location:Localized in the Brefeldin A-sensitive Golgi compartment, at centrosomes, in the nucleus with a somewhat speckle-like presence, membrane-associated to the endoplasmic reticulum (ER) and the plasma membrane (PM), and more diffusely in the cytoplasm. Found to concentrate in splicing factor compartments (SFCs) within the nucleus of interphase cells. The acylation-negative form may be only cytoplasmic and nuclear. Acylation seems to allow the sequestering to the intracellular membranes. Myristoylation may mediate targeting to the intracellular non-Golgi membranes and palmitoylation may mediate the targeting to the Golgi membranes. Dual acylation is required to stabilize the interaction with Golgi membranes.,subunit:Homodimer.,tissue specificity:Expressed in all tissues and cell lines tested with the highest level of abundance in testis.,		

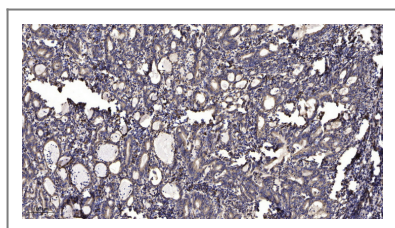
| Validation Data



Western Blot analysis of various cells using PSK-H1 Polyclonal Antibody



Western blot analysis of lysates from A549 cells, using KPSH1 Antibody. The lane on the right is blocked with the synthesized peptide.



Immunohistochemical analysis of paraffin-embedded human Gastric adenocarcinoma. 1, Antibody was diluted at 1:200(4° overnight). 2, Tris-EDTA,pH9.0 was used for antigen retrieval. 3,Secondary antibody was diluted at 1:200(room temperature, 45min).

Contact information

Orders: order@immunoway.com
 Support: tech@immunoway.com
 Telephone: 877-594-3616 (Toll Free), 408-747-0185
 Website: <http://www.immunoway.com>
 Address: 2200 Ringwood Ave San Jose, CA 95131 USA



Please scan the QR code to access additional product information:
PSK-H1 Rabbit pAb

