

## PSGR Rabbit pAb

CatalogNo: YT3881

### Key Features

#### Host Species

- Rabbit

#### Reactivity

- Human,Rat

#### Applications

- WB,IF,ELISA,IHC

#### MW

- 35kD (Observed)

#### Isotype

- IgG

### Recommended Dilution Ratios

**WB 1:500-2000**

**IHC 1:50-300**

**IF 1:200-1:1000**

**ELISA 1:2000-20000**

### Storage

#### Storage\*

-15°C to -25°C/1 year(Do not lower than -25°C)

#### Formulation

Liquid in PBS containing 50% glycerol, 0.5% BSA and 0.02% sodium azide.

### Basic Information

#### Clonality

Polyclonal

### Immunogen Information

#### Immunogen

The antiserum was produced against synthesized peptide derived from human OR51E2. AA range:221-270

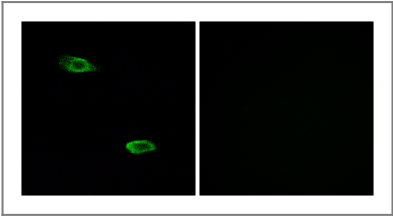
#### Specificity

PSGR Polyclonal Antibody detects endogenous levels of PSGR protein.

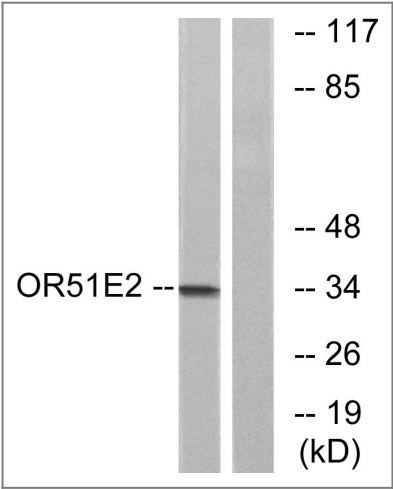
### Target Information

Gene name	OR51E2		
Protein Name	Olfactory receptor 51E2		
	Organism	Gene ID	UniProt ID
	Human	<a href="#">81285;</a>	<a href="#">Q9H255;</a>
	Rat	<a href="#">170816;</a>	<a href="#">O88628;</a>
Cellular Localization	Cell membrane ; Multi-pass membrane protein . Early endosome membrane ; Multi-pass membrane protein .		
Tissue specificity	Highly expressed in the prostate (PubMed:11707321). Also expressed in spleen, liver, olfactory epithelium, retinal pigment epithelium and medulla oblongata (PubMed:29249973, PubMed:11707321, PubMed:16491480). In the retinal pigment epithelium expression is restricted to the pigment cells and choroid (at protein level) (PubMed:29249973). Expressed in epidermal melanocytes (at protein level) (PubMed:27226631).		
Function	Function:Odorant receptor .,similarity:Belongs to the G-protein coupled receptor 1 family.,tissue specificity:Exclusively expressed in the prostate. Up-regulated in prostate cancers.,		

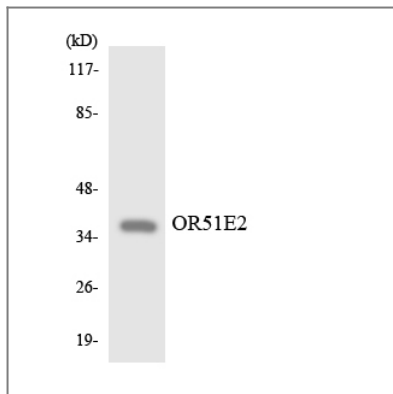
| Validation Data



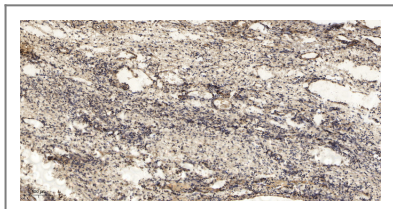
Immunofluorescence analysis of A549 cells, using OR51E2 Antibody. The picture on the right is blocked with the synthesized peptide.



Western blot analysis of lysates from Jurkat cells, using OR51E2 Antibody. The lane on the right is blocked with the synthesized peptide.



Western blot analysis of the lysates from HepG2 cells using OR51E2 antibody.



Immunohistochemical analysis of paraffin-embedded human oophoroma. 1, Antibody was diluted at 1:200(4° overnight). 2, Tris-EDTA,pH9.0 was used for antigen retrieval. 3,Secondary antibody was diluted at 1:200(room temperature, 45min).

## Contact information

Orders: [order@immunoway.com](mailto:order@immunoway.com)  
 Support: [tech@immunoway.com](mailto:tech@immunoway.com)  
 Telephone: 877-594-3616 (Toll Free), 408-747-0185  
 Website: <http://www.immunoway.com>  
 Address: 2200 Ringwood Ave San Jose, CA 95131 USA



Please scan the QR code to access additional product information:  
**PSGR Rabbit pAb**

For Research Use Only. Not for Use in Diagnostic Procedures.

[Antibody](#) | [ELISA Kits](#) | [Protein](#) | [Reagents](#)