

## PRIM1 Rabbit pAb

CatalogNo: YT3858

### Key Features

#### Host Species

- Rabbit

#### Reactivity

- Human, Mouse, Rat

#### Applications

- WB, IHC, IF, ELISA

#### MW

- 50kD (Observed)

#### Isotype

- IgG

### Recommended Dilution Ratios

**WB 1:500-1:2000**

**IHC 1:100-1:300**

**ELISA 1:10000**

**IF 1:50-200**

### Storage

#### Storage\*

-15°C to -25°C/1 year (Do not lower than -25°C)

#### Formulation

Liquid in PBS containing 50% glycerol, 0.5% BSA and 0.02% sodium azide.

### Basic Information

#### Clonality

Polyclonal

### Immunogen Information

#### Immunogen

The antiserum was produced against synthesized peptide derived from human PRIM1. AA range: 371-420

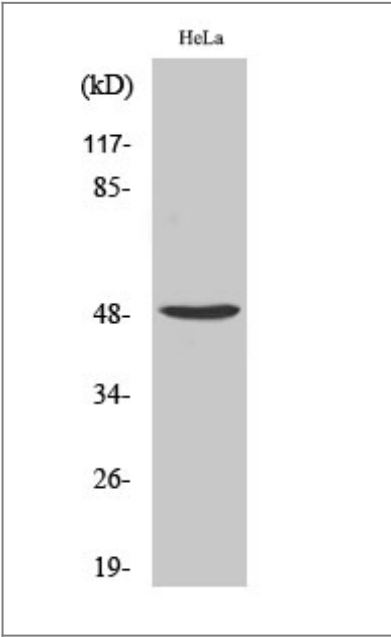
#### Specificity

PRIM1 Polyclonal Antibody detects endogenous levels of PRIM1 protein.

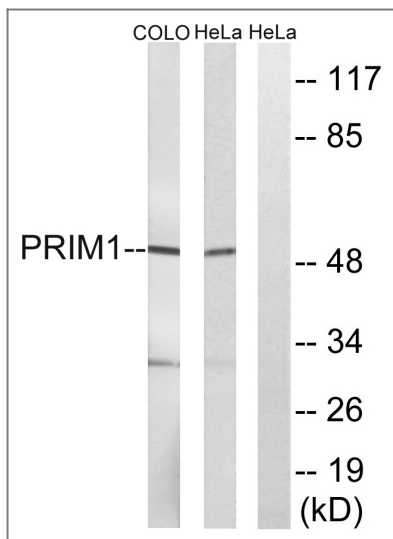
### Target Information

Gene name	PRIM1		
Protein Name	DNA primase small subunit		
	Organism	Gene ID	UniProt ID
	Human	<a href="#">5557;</a>	<a href="#">P49642;</a>
	Mouse	<a href="#">19075;</a>	<a href="#">P20664;</a>
Cellular Localization	nucleoplasm,alpha DNA polymerase:primase complex,membrane,primosome complex,		
Tissue specificity	Bone marrow,Thymus,		
Function	Function:DNA primase is the polymerase that synthesizes small RNA primers for the Okazaki fragments made during discontinuous DNA replication.,miscellaneous:The bound zinc ion is not a cofactor. It is bound to a zinc knuckle motif that may be involved in sequence recognition and the binding of ssDNA.,similarity:Belongs to the eukaryotic-type primase small subunit family.,subunit:Heterodimer of a small subunit and a large subunit.,		

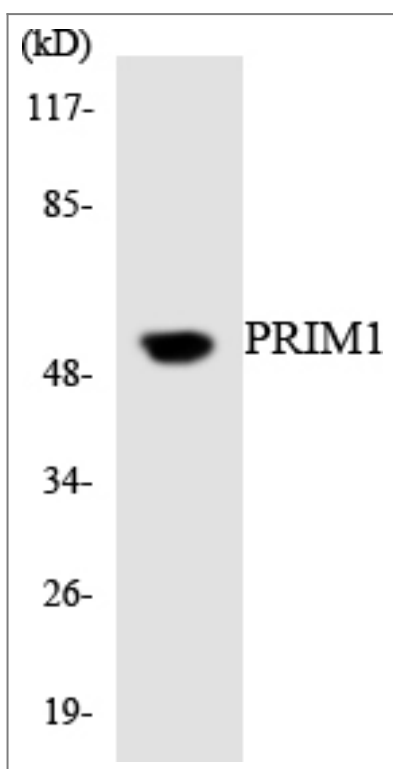
| Validation Data



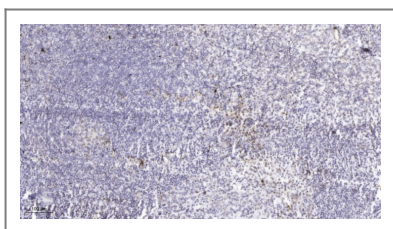
Western Blot analysis of various cells using PRIM1 Polyclonal Antibody cells nucleus extracted by Minute TM Cytoplasmic and Nuclear Fractionation kit (SC-003,Inventbiotech,MN,USA).



Western blot analysis of lysates from COLO and HeLa cells, using PRIM1 Antibody. The lane on the right is blocked with the synthesized peptide.



Western blot analysis of the lysates from K562 cells using PRIM1 antibody.



Immunohistochemical analysis of paraffin-embedded human tonsil. 1, Antibody was diluted at 1:200(4° overnight). 2, Tris-EDTA,pH9.0 was used for antigen retrieval. 3,Secondary antibody was diluted at 1:200(room temperature, 45min).

## Contact information

Orders: order@immunoway.com  
 Support: tech@immunoway.com  
 Telephone: 877-594-3616 (Toll Free), 408-747-0185  
 Website: <http://www.immunoway.com>  
 Address: 2200 Ringwood Ave San Jose, CA 95131 USA



Please scan the QR code to access additional product information:  
**PRIM1 Rabbit pAb**

