

## PP2A-B56- $\alpha$ Rabbit pAb

CatalogNo: YT3828

### Key Features

**Host Species**

- Rabbit

**Reactivity**

- Human, Mouse, Rat

**Applications**

- WB, IHC

**MW**

- 57kD (Observed)

**Isotype**

- IgG

### Storage

**Storage\*** -15°C to -25°C/1 year (Do not lower than -25°C)**Formulation** Liquid in PBS containing 50% glycerol, 0.5% BSA and 0.02% sodium azide.

### Recommended Dilution Ratios

**WB 1:500-2000****IHC 1:50-300**

### Basic Information

**Clonality** Polyclonal

### Immunogen Information

**Immunogen** The antiserum was produced against synthesized peptide derived from human PPP2R5A. AA range: 321-370**Specificity** PP2A-B56- $\alpha$  Polyclonal Antibody detects endogenous levels of PP2A-B56- $\alpha$  protein.

### Target Information

**Gene name** PPP2R5A

**Protein Name** Serine/threonine-protein phosphatase 2A 56 kDa regulatory subunit alpha isoform

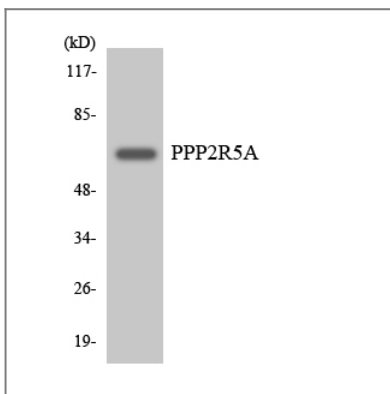
Organism	Gene ID	UniProt ID
Human	<a href="#">5525;</a>	<a href="#">Q15172;</a>
Mouse	<a href="#">226849;</a>	<a href="#">Q6PD03;</a>

**Cellular Localization** Cytoplasm . Nucleus . Chromosome, centromere . From mitotic prophase to metaphase, localizes at the inner centromere between a pair of sister kinetochores. Decreased expression at the onset of anaphase. .

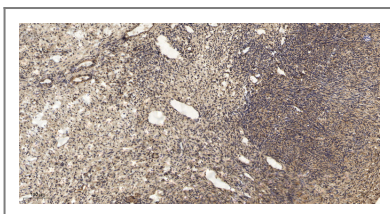
**Tissue specificity** Widely expressed with the highest expression in heart and skeletal muscle.

**Function** Function:The B regulatory subunit might modulate substrate selectivity and catalytic activity, and also might direct the localization of the catalytic enzyme to a particular subcellular compartment.,PTM:Phosphorylated on serine residues.,similarity:Belongs to the phosphatase 2A regulatory subunit B56 family.,subcellular location:From mitotic prophase to metaphase, localizes at the inner centromere between a pair of sister kinetochores. Decreased expression at the onset of anaphase.,subunit:PP2A consists of a common heterodimeric core enzyme, composed of a 36 kDa catalytic subunit (subunit C) and a 65 kDa constant regulatory subunit (PR65 or subunit A), that associates with a variety of regulatory subunits. Proteins that associate with the core dimer include three families of regulatory subunits B (the R2/B/PR55/B55, R3/B''/PR72/PR130/PR59 and R5/B'/B56 families), the 48 kDa variable regulatory subunit, viral proteins, and cell signaling molecules. Interacts with SGOL1.,tissue specificity:Widely expressed with the highest expression in heart and skeletal muscle.,

## Validation Data



Western blot analysis of the lysates from HeLa cells using PPP2R5A antibody.



Immunohistochemical analysis of paraffin-embedded human oophoroma. 1, Antibody was diluted at 1:200(4° overnight). 2, Tris-EDTA,pH9.0 was used for antigen retrieval. 3,Secondary antibody was diluted at 1:200(room temperature, 45min).

## Contact information

Orders: order@immunoway.com  
Support: tech@immunoway.com  
Telephone: 877-594-3616 (Toll Free), 408-747-0185  
Website: http://www.immunoway.com  
Address: 2200 Ringwood Ave San Jose, CA 95131 USA



Please scan the QR code  
to access additional  
product information:  
**PP2A-B56- $\alpha$  Rabbit  
pAb**

---

For Research Use Only. Not for Use in Diagnostic Procedures.

[Antibody](#) | [ELISA Kits](#) | [Protein](#) | [Reagents](#)