

PP2A-A β Rabbit pAb

CatalogNo: YT3826

Key Features

Host Species

- Rabbit

Reactivity

- Human, Mouse, Rat

Applications

- WB, IHC, IF, ELISA

MW

- 66kD (Observed)

Isotype

- IgG

Recommended Dilution Ratios

WB 1:500-1:2000

IHC:1:50-300

ELISA 1:20000

IF 1:50-200

Storage

Storage*

-15°C to -25°C/1 year (Do not lower than -25°C)

Formulation

Liquid in PBS containing 50% glycerol, 0.5% BSA and 0.02% sodium azide.

Basic Information

Clonality

Polyclonal

Immunogen Information

Immunogen

The antiserum was produced against synthesized peptide derived from human PPP2R1B. AA range:552-601

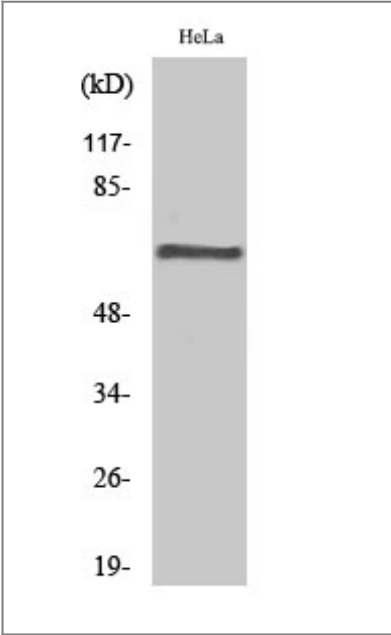
Specificity

PP2A-A β Polyclonal Antibody detects endogenous levels of PP2A-A β protein.

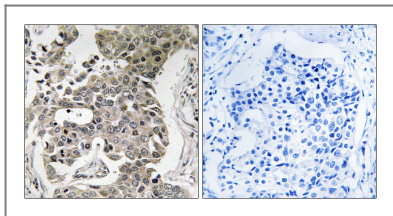
Target Information

Gene name	PPP2R1B		
Protein Name	Serine/threonine-protein phosphatase 2A 65 kDa regulatory subunit A beta isoform		
	Organism	Gene ID	UniProt ID
	Human	5519 ;	P30154 ;
	Mouse	73699 ;	Q7TNP2 ;
	Rat	315648 ;	Q4QQT4 ;
Cellular Localization	membrane raft,extracellular exosome,		
Tissue specificity	Testis,		
Function	<p>Disease:Defects in PPP2R1B might be a cause of some lung and colorectal cancers.,Domain:Each HEAT repeat appears to consist of two alpha helices joined by a hydrophilic region, the intrarepeat loop. The repeat units may be arranged laterally to form a rod-like structure.,Function:The PR65 subunit of protein phosphatase 2A serves as a scaffolding molecule to coordinate the assembly of the catalytic subunit and a variable regulatory B subunit.,sequence Caution:Contaminating sequence. Sequence of unknown origin in the N-terminal part.,similarity:Belongs to the phosphatase 2A regulatory subunit A family.,similarity:Contains 15 HEAT repeats.,subunit:PP2A consists of a common heterodimeric core enzyme, composed of a 36 kDa catalytic subunit (subunit C) and a 65 kDa constant regulatory subunit (PR65 or subunit A), that associates with a variety of regulatory subunits. Proteins that associate with the core dimer include three families of regulatory subunits B (the R2/B/PR55/B55, R3/B''/PR72/PR130/PR59 and R5/B'/B56 families), the 48 kDa variable regulatory subunit, viral proteins, and cell signaling molecules. Interacts with IPO9. Interacts with SGOL1.,</p>		

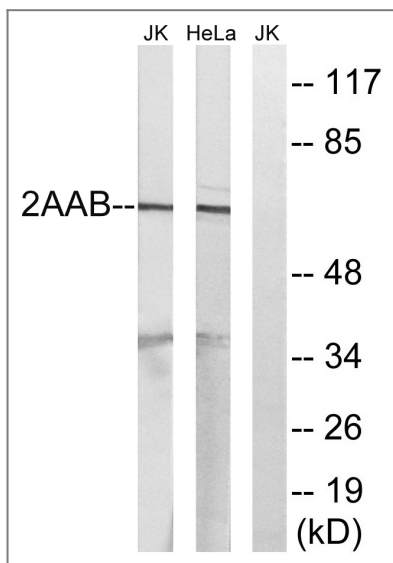
| Validation Data



Western Blot analysis of various cells using PP2A-Aβ Polyclonal Antibody



Immunohistochemistry analysis of paraffin-embedded human breast carcinoma tissue, using PPP2R1B Antibody. The picture on the right is blocked with the synthesized peptide.



Western blot analysis of lysates from HeLa and Jurkat cells, using PPP2R1B Antibody. The lane on the right is blocked with the synthesized peptide.

Contact information

Orders: order@immunoway.com
 Support: tech@immunoway.com
 Telephone: 877-594-3616 (Toll Free), 408-747-0185
 Website: <http://www.immunoway.com>
 Address: 2200 Ringwood Ave San Jose, CA 95131 USA



Please scan the QR code to access additional product information:
PP2A-A β Rabbit pAb

For Research Use Only. Not for Use in Diagnostic Procedures.

[Antibody](#) | [ELISA Kits](#) | [Protein](#) | [Reagents](#)