

POTE14/22 Rabbit pAb

CatalogNo: YT3821

Key Features

Host Species

- Rabbit

Reactivity

- Human

Applications

- WB,IHC,IF,ELISA

MW

- 67kD (Observed)

Isotype

- IgG

Recommended Dilution Ratios

WB 1:500-1:2000

IHC 1:100-1:300

ELISA 1:40000

IF 1:50-200

Storage

Storage*

-15°C to -25°C/1 year(Do not lower than -25°C)

Formulation

Liquid in PBS containing 50% glycerol, 0.5% BSA and 0.02% sodium azide.

Basic Information

Clonality

Polyclonal

Immunogen Information

Immunogen

The antiserum was produced against synthesized peptide derived from human POTE14/22. AA range:401-450

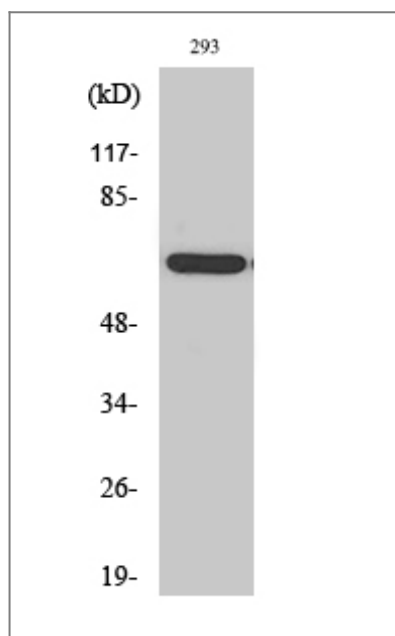
Specificity

POTE14/22 Polyclonal Antibody detects endogenous levels of POTE14/22 protein.

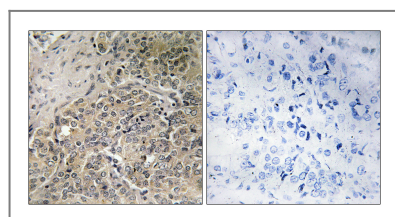
Target Information

Gene name	POTEG		
Protein Name	POTE ankyrin domain family member G		
	Organism	Gene ID	UniProt ID
	Human	404785 ; 23784 ;	Q6S5H5 ; Q6S545 ; A6NI47 ;
Tissue specificity	Prostate,		
Function	similarity:Belongs to the POTE family.,similarity:Contains 5 ANK repeats.,		

Validation Data



Western Blot analysis of various cells using POTE14/22 Polyclonal Antibody



Immunohistochemistry analysis of paraffin-embedded human prostate carcinoma, using A26C2/3 Antibody. The picture on the right is blocked with the synthesized peptide.

Contact information

Orders: order@immunoway.com
 Support: tech@immunoway.com
 Telephone: 877-594-3616 (Toll Free), 408-747-0185
 Website: <http://www.immunoway.com>
 Address: 2200 Ringwood Ave San Jose, CA 95131 USA



Please scan the QR code
 to access additional
 product information:
**POTE14/22 Rabbit
 pAb**

