

POLR3C Rabbit pAb

CatalogNo: YT3815

Key Features

Host Species

- Rabbit

Reactivity

- Human,Rat,Mouse,

Applications

- WB,ELISA,IHC

MW

- 60kD (Observed)

Isotype

- IgG

Recommended Dilution Ratios

WB 1:500-2000

IHC 1:50-300

ELISA 1:2000-20000

Storage

Storage* -15°C to -25°C/1 year(Do not lower than -25°C)

Formulation Liquid in PBS containing 50% glycerol, 0.5% BSA and 0.02% sodium azide.

Basic Information

Clonality Polyclonal

Immunogen Information

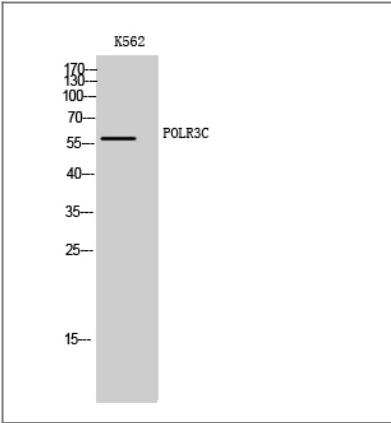
Immunogen The antiserum was produced against synthesized peptide derived from human RPC3. AA range:191-240

Specificity POLR3C Polyclonal Antibody detects endogenous levels of POLR3C protein.

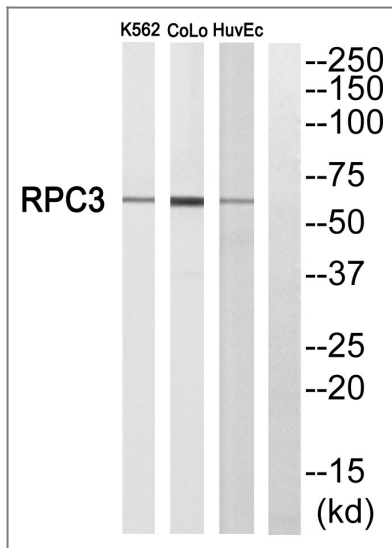
Target Information

Gene name	POLR3C		
Protein Name	DNA-directed RNA polymerase III subunit RPC3		
	Organism	Gene ID	UniProt ID
	Human	10623 ;	Q9BUI4 ;
	Mouse		Q9D483 ;
Cellular Localization	Nucleus .		
Tissue specificity	Cervix carcinoma,Lung,Ovary,		
Function	Disease:Antibodies against POLR3C were found in the sera of patients with systemic sclerosis (SSc).,Function:DNA-dependent RNA polymerase catalyzes the transcription of DNA into RNA using the four ribonucleoside triphosphates as substrates. Specific core component of RNA polymerase III which synthesizes small RNAs, such as 5S rRNA and tRNAs. May direct with other members of the subcomplex RNA Pol III binding to the TFIIIB-DNA complex via the interactions between TFIIIB and POLR3F. May be involved either in the recruitment and stabilization of the subcomplex within RNA polymerase III, or in stimulating catalytic functions of other subunits during initiation.,similarity:Belongs to the eukaryotic RPC3/POLR3C RNA polymerase subunit family.,subunit:Component of the RNA polymerase III (Pol III) complex consisting of 17 subunits (By similarity). RPC3/POLR3C, RPC6/POLR3F and RPC7/POLR3G form a Pol III subcomplex. Interacts with GTF3C4.,		

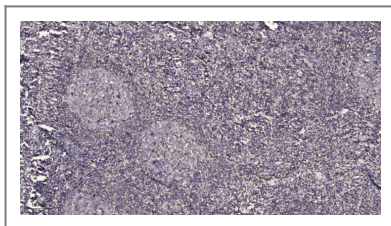
Validation Data



Western Blot analysis of K562 cells using POLR3C Polyclonal Antibody cells nucleus extracted by Minute TM Cytoplasmic and Nuclear Fractionation kit (SC-003,Inventbiotech,MN,USA).



Western blot analysis of RPC3 Antibody. The lane on the right is blocked with the RPC3 peptide.



Immunohistochemical analysis of paraffin-embedded human tonsil. 1, Antibody was diluted at 1:200(4° overnight). 2, Tris-EDTA,pH9.0 was used for antigen retrieval. 3,Secondary antibody was diluted at 1:200(room temperature, 45min).

Contact information

Orders: order@immunoway.com
 Support: tech@immunoway.com
 Telephone: 877-594-3616 (Toll Free), 408-747-0185
 Website: <http://www.immunoway.com>
 Address: 2200 Ringwood Ave San Jose, CA 95131 USA



Please scan the QR code to access additional product information:
POLR3C Rabbit pAb

For Research Use Only. Not for Use in Diagnostic Procedures.

[Antibody](#) | [ELISA Kits](#) | [Protein](#) | [Reagents](#)