

POLR3B Rabbit pAb

CatalogNo: YT3814

Key Features

Host Species

- Rabbit

Reactivity

- Human, Mouse, Rat

Applications

- WB, IHC, IF, ELISA

MW

- 128kD (Observed)

Isotype

- IgG

Storage

Storage* -15°C to -25°C/1 year (Do not lower than -25°C)**Formulation** Liquid in PBS containing 50% glycerol, 0.5% BSA and 0.02% sodium azide.

Recommended Dilution Ratios

WB 1:500-1:2000**IHC 1:100-1:300****ELISA 1:20000****IF 1:50-200**

Basic Information

Clonality Polyclonal

Immunogen Information

Immunogen The antiserum was produced against synthesized peptide derived from human POLR3B. AA range: 321-370**Specificity** POLR3B Polyclonal Antibody detects endogenous levels of POLR3B protein.

Target Information

Gene name POLR3B

Protein Name DNA-directed RNA polymerase III subunit RPC2

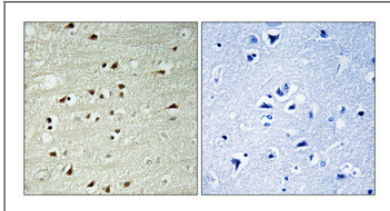
Organism	Gene ID	UniProt ID
Human	55703 ;	Q9NW08 ;
Mouse	70428 ;	P59470 ;

Cellular Localization Nucleus .

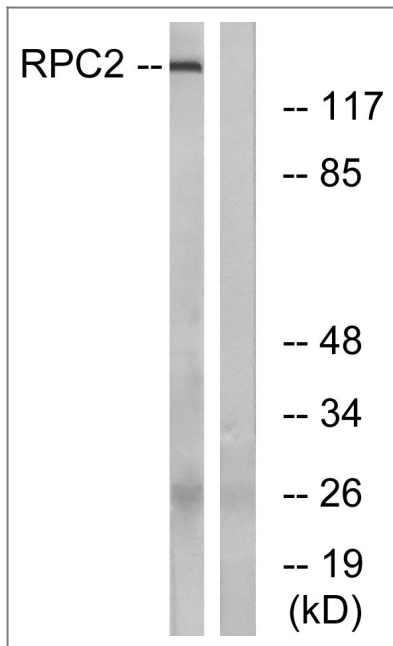
Tissue specificity Muscle, Teratocarcinoma, Tongue, Uterus endothel,

Function Catalytic activity: Nucleoside triphosphate + RNA(n) = diphosphate + RNA(n+1)., Function: DNA-dependent RNA polymerase catalyzes the transcription of DNA into RNA using the four ribonucleoside triphosphates as substrates. Second largest core component of RNA polymerase III which synthesizes small RNAs, such as 5S rRNA and tRNAs. Proposed to contribute to the polymerase catalytic activity and forms the polymerase active center together with the largest subunit. Pol III is composed of mobile elements and RPC2 is part of the core element with the central large cleft and probably a clamp element that moves to open and close the cleft., similarity: Belongs to the RNA polymerase beta chain family., subunit: Component of the RNA polymerase III (Pol III) complex consisting of 17 subunits.,

Validation Data



Immunohistochemical analysis of paraffin-embedded Human brain. Antibody was diluted at 1:100 (4° overnight). High-pressure and temperature Tris-EDTA, pH 8.0 was used for antigen retrieval. Negative control (right) obtained from antibody was pre-absorbed by immunogen peptide.



Western blot analysis of lysates from LOVO cells, using RPC2 Antibody. The lane on the right is blocked with the synthesized peptide.

Contact information

Orders: order@immunoway.com
Support: tech@immunoway.com
Telephone: 877-594-3616 (Toll Free), 408-747-0185
Website: <http://www.immunoway.com>
Address: 2200 Ringwood Ave San Jose, CA 95131 USA



Please scan the QR code to access additional product information:
POLR3B Rabbit pAb

For Research Use Only. Not for Use in Diagnostic Procedures.

[Antibody](#) | [ELISA Kits](#) | [Protein](#) | [Reagents](#)