

## PNPase Rabbit pAb

CatalogNo: YT3807

### Key Features

#### Host Species

- Rabbit

#### Reactivity

- Human, Mouse

#### Applications

- WB, IHC, IF, ELISA

#### MW

- 85kD (Observed)

#### Isotype

- IgG

### Recommended Dilution Ratios

**WB 1:500-1:2000**

**IHC 1:100-1:300**

**ELISA 1:20000**

**IF 1:50-200**

### Storage

#### Storage\*

-15°C to -25°C/1 year (Do not lower than -25°C)

#### Formulation

Liquid in PBS containing 50% glycerol, 0.5% BSA and 0.02% sodium azide.

### Basic Information

#### Clonality

Polyclonal

### Immunogen Information

#### Immunogen

The antiserum was produced against synthesized peptide derived from human PNPT1. AA range: 570-619

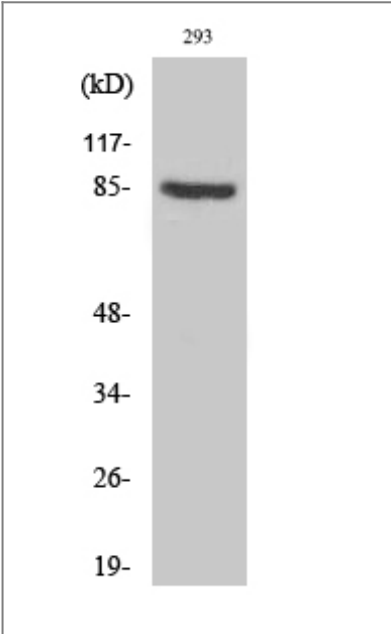
#### Specificity

PNPase Polyclonal Antibody detects endogenous levels of PNPase protein.

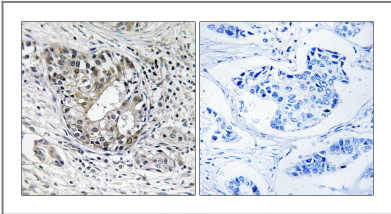
### Target Information

Gene name	PNPT1		
Protein Name	Polyribonucleotide nucleotidyltransferase 1 mitochondrial		
	Organism	Gene ID	UniProt ID
	Human	<a href="#">87178;</a>	<a href="#">Q8TCS8;</a>
	Mouse	<a href="#">71701;</a>	<a href="#">Q8K1R3;</a>
Cellular Localization	Cytoplasm . Mitochondrion matrix . Mitochondrion intermembrane space ; Peripheral membrane protein .		
Tissue specificity	Cervix,Epithelium,Melanoma,Skin,Teratocarcinoma,Urinary bla		
Function	Catalytic activity:RNA(n+1) + phosphate = RNA(n) + a nucleoside diphosphate.,Function:Involved in mRNA degradation. Hydrolyzes single-stranded polyribonucleotides processively in the 3'- to 5'-direction.,induction:Up-regulated in cells upon senescence and terminal differentiation. Up-regulated after treatment with interferon beta (IFN-beta).,PTM:Phosphorylated upon DNA damage, probably by ATM or ATR.,similarity:Belongs to the polyribonucleotide nucleotidyltransferase family.,similarity:Contains 1 KH domain.,similarity:Contains 1 S1 motif domain.,subunit:Homotrimer (Potential). Interacts with TCL1A; the interaction has no effect on PNPT1 exonuclease activity.,		

Validation Data



Western Blot analysis of various cells using PNPase Polyclonal Antibody diluted at 1:1000



Immunohistochemistry analysis of paraffin-embedded human breast carcinoma tissue, using PNPT1 Antibody. The picture on the right is blocked with the synthesized peptide.

## | Contact information

Orders: order@immunoway.com  
Support: tech@immunoway.com  
Telephone: 877-594-3616 (Toll Free), 408-747-0185  
Website: <http://www.immunoway.com>  
Address: 2200 Ringwood Ave San Jose, CA 95131 USA



Please scan the QR code  
to access additional  
product information:

**PNPase Rabbit pAb**

---

For Research Use Only. Not for Use in Diagnostic Procedures.

[Antibody](#) | [ELISA Kits](#) | [Protein](#) | [Reagents](#)