

## Pmp24 Rabbit pAb

CatalogNo: YT3802

### Key Features

#### Host Species

- Rabbit

#### Reactivity

- Human, Monkey

#### Applications

- WB, IHC, IF, ELISA

#### MW

- 24kD (Observed)

#### Isotype

- IgG

### Storage

**Storage\*** -15°C to -25°C/1 year (Do not lower than -25°C)

**Formulation** Liquid in PBS containing 50% glycerol, 0.5% BSA and 0.02% sodium azide.

### Recommended Dilution Ratios

**WB 1:500-1:2000**

**IHC 1:100-1:300**

**ELISA 1:20000**

**IF 1:50-200**

### Basic Information

**Clonality** Polyclonal

### Immunogen Information

**Immunogen** The antiserum was produced against synthesized peptide derived from human PXMP4. AA range:15-64

**Specificity** Pmp24 Polyclonal Antibody detects endogenous levels of Pmp24 protein.

### Target Information

**Gene name** PXMP4

**Protein Name** Peroxisomal membrane protein 4

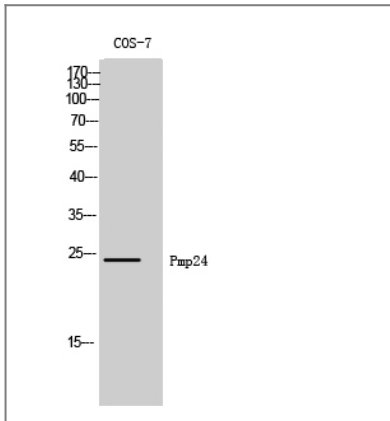
Organism	Gene ID	UniProt ID
Human	<a href="#">11264;</a>	<a href="#">Q9Y6I8;</a>
Mouse		<a href="#">Q9JJW0;</a>

**Cellular Localization** Peroxisome membrane ; Multi-pass membrane protein .

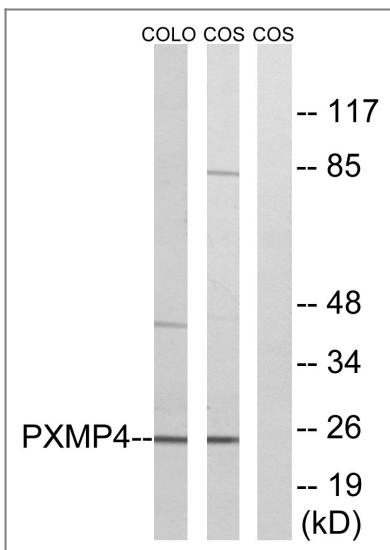
**Tissue specificity** Expressed in normal prostate epithelial cells, and androgen-sensitive prostate adenocarcinoma cells. Not expressed in androgen-insensitive prostate adenocarcinoma cells.

**Function** similarity:Belongs to the peroxisomal membrane protein PXMP2/4 family.,subunit:Interacts with PEX19.,

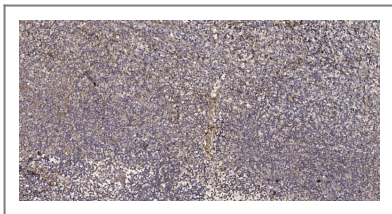
## Validation Data



Western Blot analysis of COS-7 cells using Pmp24 Polyclonal Antibody



Western blot analysis of lysates from COS7 and COLO cells, using PXMP4 Antibody. The lane on the right is blocked with the synthesized peptide.



Immunohistochemical analysis of paraffin-embedded human tonsil. 1, Antibody was diluted at 1:200(4° overnight). 2, Tris-EDTA,pH9.0 was used for antigen retrieval. 3,Secondary antibody was diluted at 1:200(room temperature, 30min).

## | Contact information

Orders: [order@immunoway.com](mailto:order@immunoway.com)  
Support: [tech@immunoway.com](mailto:tech@immunoway.com)  
Telephone: 877-594-3616 (Toll Free), 408-747-0185  
Website: <http://www.immunoway.com>  
Address: 2200 Ringwood Ave San Jose, CA 95131 USA



Please scan the QR code to access additional product information:

**Pmp24 Rabbit pAb**

---

For Research Use Only. Not for Use in Diagnostic Procedures.

[Antibody](#) | [ELISA Kits](#) | [Protein](#) | [Reagents](#)