

## PLC-XD1 Rabbit pAb

CatalogNo: YT3796

### Key Features

#### Host Species

- Rabbit

#### Reactivity

- Human, Mouse

#### Applications

- IHC, IF, ELISA

#### MW

- 37kD (Calculated)

#### Isotype

- IgG

### Recommended Dilution Ratios

IHC 1:100-1:300

ELISA 1:40000

IF 1:50-200

### Storage

**Storage\*** -15°C to -25°C/1 year (Do not lower than -25°C)

**Formulation** Liquid in PBS containing 50% glycerol, 0.5% BSA and 0.02% sodium azide.

### Basic Information

**Clonality** Polyclonal

### Immunogen Information

**Immunogen** The antiserum was produced against synthesized peptide derived from human PLCXD1. AA range: 187-236

**Specificity** PLC-XD1 Polyclonal Antibody detects endogenous levels of PLC-XD1 protein.

### Target Information

**Gene name** PLCXD1

**Protein Name** PI-PLC X domain-containing protein 1

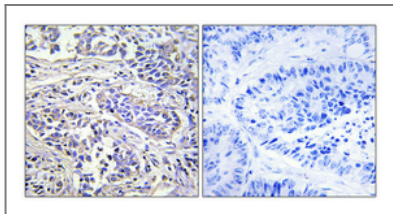
Organism	Gene ID	UniProt ID
Human	<a href="#">55344;</a>	<a href="#">Q9NUJ7;</a>
Mouse		<a href="#">Q8CHS4;</a>

**Cellular Localization** Cytoplasm .

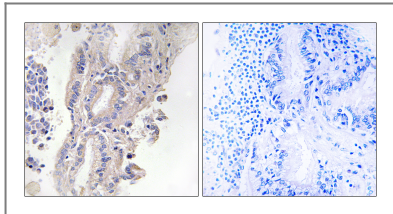
**Tissue specificity** Widely expressed.

**Function** miscellaneous:The gene encoding for this protein is located in the pseudoautosomal region 1 (PAR1) of X and Y chromosomes.,similarity:Contains 1 PI-PLC X-box domain.,

## Validation Data



Immunohistochemical analysis of paraffin-embedded Human lung cancer. Antibody was diluted at 1:100(4° overnight). High-pressure and temperature Tris-EDTA,pH8.0 was used for antigen retrieval. Negative control (right) obtained from antibody was pre-absorbed by immunogen peptide.



Immunohistochemistry analysis of paraffin-embedded human lung carcinoma, using PLCXD1 Antibody. The picture on the right is blocked with the synthesized peptide.

## Contact information

Orders: [order@immunoway.com](mailto:order@immunoway.com)  
Support: [tech@immunoway.com](mailto:tech@immunoway.com)  
Telephone: 877-594-3616 (Toll Free), 408-747-0185  
Website: <http://www.immunoway.com>  
Address: 2200 Ringwood Ave San Jose, CA 95131 USA



Please scan the QR code to access additional product information:  
**PLC-XD1 Rabbit pAb**