

PLC β 3 Rabbit pAb

CatalogNo: YT3790

| Key Features

Host Species

- Rabbit

Reactivity

- Human, Mouse, Rat

Applications

- WB, IHC, IF, ELISA

MW

- 140kD (Observed)

Isotype

- IgG

| Recommended Dilution Ratios

WB 1:500-1:2000

IHC 1:100-1:300

IF 1:200-1:1000

ELISA 1:5000

Not yet tested in other applications.

| Storage

Storage*

-15°C to -25°C/1 year (Do not lower than -25°C)

Formulation

Liquid in PBS containing 50% glycerol, 0.5% BSA and 0.02% sodium azide.

| Basic Information

Clonality

Polyclonal

| Immunogen Information

Immunogen

The antiserum was produced against synthesized peptide derived from human PLC beta3. AA range: 503-552

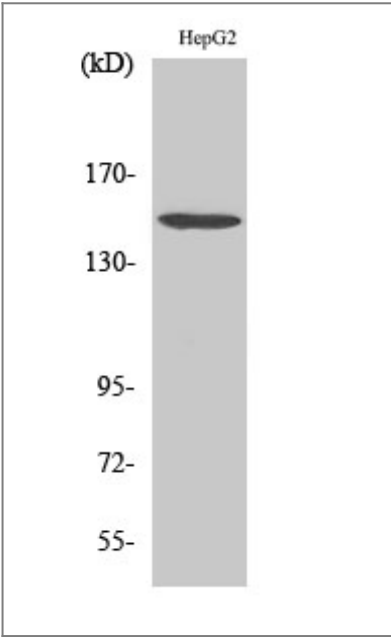
Specificity

PLC β 3 Polyclonal Antibody detects endogenous levels of PLC β 3 protein.

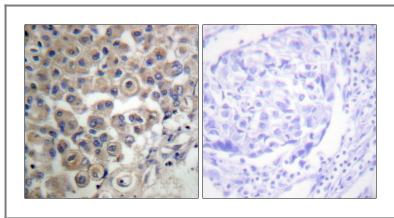
Target Information

Gene name	PLCB3		
Protein Name	1-phosphatidylinositol 4,5-bisphosphate phosphodiesterase beta-3		
	Organism	Gene ID	UniProt ID
	Human	5331 ;	Q01970 ;
	Mouse		P51432 ;
	Rat		Q99JE6 ;
Cellular Localization	Cytoplasm . Membrane . Nucleus . And particulate fractions. .		
Tissue specificity	Epithelium,Uterus,		
Function	Catalytic activity:1-phosphatidyl-1D-myo-inositol 4,5-bisphosphate + H(2)O = 1D-myo-inositol 1,4,5-trisphosphate + diacylglycerol.,cofactor:Calcium.,Function:The production of the second messenger molecules diacylglycerol (DAG) and inositol 1,4,5-trisphosphate (IP3) is mediated by activated phosphatidylinositol-specific phospholipase C enzymes.,similarity:Contains 1 C2 domain.,similarity:Contains 1 PI-PLC X-box domain.,similarity:Contains 1 PI-PLC Y-box domain.,subunit:Interacts with SHANK2 (By similarity). Interacts with LPAR2.,		

Validation Data



Western Blot analysis of various cells using PLC β3 Polyclonal Antibody



Immunohistochemistry analysis of paraffin-embedded human breast carcinoma tissue, using PLC beta3 Antibody. The picture on the right is blocked with the synthesized peptide.

| Contact information

Orders: order@immunoway.com
Support: tech@immunoway.com
Telephone: 877-594-3616 (Toll Free), 408-747-0185
Website: <http://www.immunoway.com>
Address: 2200 Ringwood Ave San Jose, CA 95131 USA



Please scan the QR code
to access additional
product information:

PLCβ3 Rabbit pAb

For Research Use Only. Not for Use in Diagnostic Procedures.

[Antibody](#) | [ELISA Kits](#) | [Protein](#) | [Reagents](#)