

PLB Rabbit pAb

CatalogNo: YT3787

Key Features

Host Species

- Rabbit

Reactivity

- Human, Mouse, Rat

Applications

- WB, IHC, IF

MW

- 6kD (Calculated)

Isotype

- IgG

Recommended Dilution Ratios

WB 1:500-2000

IHC 1:50-300

IF 1:200-1:1000

Storage

Storage*

-15°C to -25°C/1 year (Do not lower than -25°C)

Formulation

Liquid in PBS containing 50% glycerol, 0.5% BSA and 0.02% sodium azide.

Basic Information

Clonality

Polyclonal

Immunogen Information

Immunogen

The antiserum was produced against synthesized peptide derived from human PLB. AA range: 1-50

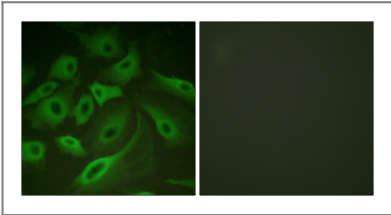
Specificity

PLB Polyclonal Antibody detects endogenous levels of PLB protein.

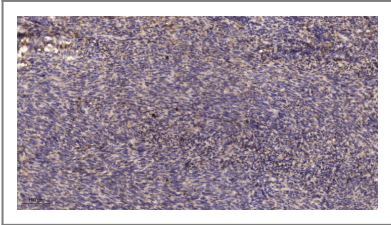
Target Information

Gene name	PLN		
Protein Name	Cardiac phospholamban		
	Organism	Gene ID	UniProt ID
	Human	5350 ;	P26678 ;
	Mouse	18821 ;	P61014 ;
	Rat	64672 ;	P61016 ;
Cellular Localization	Endoplasmic reticulum membrane ; Single-pass membrane protein . Sarcoplasmic reticulum membrane ; Single-pass membrane protein . Mitochondrion membrane ; Single-pass membrane protein . Membrane ; Single-pass membrane protein . Colocalizes with HAX1 at the endoplasmic reticulum (PubMed:17241641). Colocalizes with DMPK a the sarcoplasmic reticulum (PubMed:15598648). .		
Tissue specificity	Heart muscle (at protein level).		
Function	Disease:Defects in PLN are the cause of cardiomyopathy dilated type 1P (CMD1P) [MIM:609909]. Dilated cardiomyopathy is a disorder characterized by ventricular dilation and impaired systolic function, resulting in congestive heart failure and arrhythmia. Patients are at risk of premature death.,Function:Phospholamban has been postulated to regulate the activity of the calcium pump of cardiac sarcoplasmic reticulum.,PTM:Phosphorylated in response to beta-adrenergic stimulation.,similarity:Belongs to the phospholamban family.,subunit:Homopentamer.,tissue specificity:Heart.,		

Validation Data



Immunofluorescence analysis of HeLa cells, using PLB Antibody. The picture on the right is blocked with the synthesized peptide.



Immunohistochemical analysis of paraffin-embedded human uterus. 1, Antibody was diluted at 1:200(4° overnight). 2, Tris-EDTA,pH9.0 was used for antigen retrieval. 3,Secondary antibody was diluted at 1:200(room temperature, 45min).

Contact information

Orders: order@immunoway.com
Support: tech@immunoway.com
Telephone: 877-594-3616 (Toll Free), 408-747-0185
Website: http://www.immunoway.com
Address: 2200 Ringwood Ave San Jose, CA 95131 USA



Please scan the QR code
to access additional
product information:
PLB Rabbit pAb

For Research Use Only. Not for Use in Diagnostic Procedures.

[Antibody](#) | [ELISA Kits](#) | [Protein](#) | [Reagents](#)