

## PKN Rabbit pAb

CatalogNo: YT3778

### Key Features

#### Host Species

- Rabbit

#### Reactivity

- Human, Mouse, Rat

#### Applications

- WB, IHC

#### MW

- 105kD (Observed)

#### Isotype

- IgG

### Recommended Dilution Ratios

WB 1:500-2000

IHC 1:50-300

### Storage

**Storage\*** -15°C to -25°C/1 year (Do not lower than -25°C)

**Formulation** Liquid in PBS containing 50% glycerol, 0.5% BSA and 0.02% sodium azide.

### Basic Information

**Clonality** Polyclonal

### Immunogen Information

**Immunogen** Synthesized peptide derived from the Internal region of human PKN.

**Specificity** PKN Polyclonal Antibody detects endogenous levels of PKN protein.

### Target Information

**Gene name** PKN1

**Protein Name** Serine/threonine-protein kinase N1

Organism	Gene ID	UniProt ID
Human	<a href="#">5585;</a>	<a href="#">Q16512;</a>
Mouse	<a href="#">320795;</a>	<a href="#">P70268;</a>
Rat	<a href="#">29355;</a>	<a href="#">Q63433;</a>

**Cellular Localization**

Cytoplasm . Nucleus . Endosome . Cell membrane ; Peripheral membrane protein . Cleavage furrow . Midbody . Associates with chromatin in a ligand-dependent manner. Localization to endosomes is mediated via its interaction with RHOB. Association to the cell membrane is dependent on Ser-377 phosphorylation. Accumulates during telophase at the cleavage furrow and finally concentrates around the midbody in cytokinesis. .

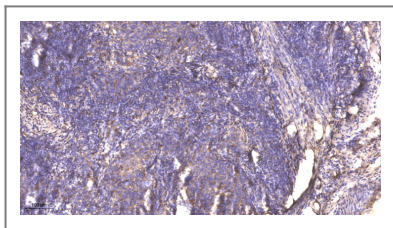
**Tissue specificity**

Found ubiquitously. Expressed in heart, brain, placenta, lung, skeletal muscle, kidney and pancreas. Expressed in numerous tumor cell lines, especially in breast tumor cells.

**Function**

Catalytic activity:ATP + a protein = ADP + a phosphoprotein.,Domain:The C1 domain does not bind the diacylglycerol (DAG).,enzyme regulation:Activated by lipids, particularly cardiolipin and to a lesser extent by other acidic phospholipids. Two specific sites, Thr-774 (activation loop of the kinase domain) and Ser-916 (turn motif), need to be phosphorylated for its full activation.,Function:Can phosphorylate ribosomal protein S6. Mediates GTPase Rho dependent intracellular signaling.,PTM:Activated by limited proteolysis with trypsin.,PTM:Autophosphorylated; preferably on serine.,similarity:Belongs to the protein kinase superfamily.,similarity:Belongs to the protein kinase superfamily. AGC Ser/Thr protein kinase family. PKC subfamily.,similarity:Contains 1 AGC-kinase C-terminal domain.,similarity:Contains 1 C2 domain.,similarity:Contains 1 protein kinase domain.,similarity:Contains 3 REM (Hr1) repeats.,subunit:Interacts with ZA20D3 (By similarity). Interacts with RhoA and Rac1.,tissue specificity:Found ubiquitously. Expressed in heart, brain, placenta, lung, skeletal muscle, kidney and pancreas.,

## | Validation Data



Immunohistochemical analysis of paraffin-embedded human cervical carcinoma. 1, Antibody was diluted at 1:200(4° overnight). 2, Tris-EDTA,pH9.0 was used for antigen retrieval. 3,Secondary antibody was diluted at 1:200(room temperature, 45min).

## | Contact information

Orders: [order@immunoway.com](mailto:order@immunoway.com)  
Support: [tech@immunoway.com](mailto:tech@immunoway.com)  
Telephone: 877-594-3616 (Toll Free), 408-747-0185  
Website: <http://www.immunoway.com>  
Address: 2200 Ringwood Ave San Jose, CA 95131 USA



Please scan the QR code to access additional product information:  
**PKN Rabbit pAb**

