

## Pki $\alpha$ Rabbit pAb

CatalogNo: YT3775

### Key Features

#### Host Species

- Rabbit

#### Reactivity

- Human, Mouse, Rat

#### Applications

- IHC, IF, ELISA

#### MW

- 8kD (Calculated)

#### Isotype

- IgG

### Recommended Dilution Ratios

IHC 1:100-1:300

IF 1:200-1:1000

ELISA 1:20000

Not yet tested in other applications.

### Storage

#### Storage\*

-15°C to -25°C/1 year (Do not lower than -25°C)

#### Formulation

Liquid in PBS containing 50% glycerol, 0.5% BSA and 0.02% sodium azide.

### Basic Information

#### Clonality

Polyclonal

### Immunogen Information

#### Immunogen

The antiserum was produced against synthesized peptide derived from human IPKA. AA range:10-59

#### Specificity

Pki  $\alpha$  Polyclonal Antibody detects endogenous levels of Pki  $\alpha$  protein.

### Target Information

**Gene name** PKIA

**Protein Name** cAMP-dependent protein kinase inhibitor alpha

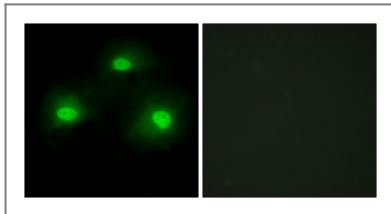
Organism	Gene ID	UniProt ID
Human	<a href="#">5569</a> ;	<a href="#">P61925</a> ;
Mouse	<a href="#">18767</a> ;	<a href="#">P63248</a> ;
Rat	<a href="#">114906</a> ;	<a href="#">P63249</a> ;

**Cellular Localization** nucleus,cytoplasm,

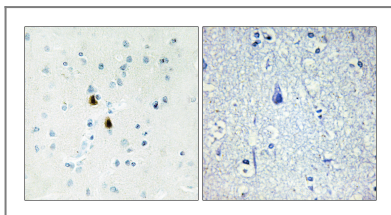
**Tissue specificity** Skeletal muscle,

**Function** Function:Extremely potent competitive inhibitor of cAMP-dependent protein kinase activity, this protein interacts with the catalytic subunit of the enzyme after the cAMP-induced dissociation of its regulatory chains.,miscellaneous:The inhibitory site contains regions very similar to the hinge regions (sites that directly interact with the enzyme active site) and "pseudosubstrate site" of the regulatory chains; but, unlike these chains, PKI does not contain cAMP-binding sites. The arginine residues within the inhibitory site are essential for inhibition and recognition of the enzyme active site.,similarity:Belongs to the PKI family.,

## Validation Data



Immunofluorescence analysis of HeLa cells, using IPKA Antibody. The picture on the right is blocked with the synthesized peptide.



Immunohistochemistry analysis of paraffin-embedded human brain tissue, using IPKA Antibody. The picture on the right is blocked with the synthesized peptide.

## Contact information

Orders: [order@immunoway.com](mailto:order@immunoway.com)  
Support: [tech@immunoway.com](mailto:tech@immunoway.com)  
Telephone: 877-594-3616 (Toll Free), 408-747-0185  
Website: <http://www.immunoway.com>  
Address: 2200 Ringwood Ave San Jose, CA 95131 USA



Please scan the QR code to access additional product information:  
**Pki  $\alpha$  Rabbit pAb**

