

PIG-X Rabbit pAb

CatalogNo: YT3726

Key Features

Host Species

- Rabbit

Reactivity

- Human,Rat,Mouse,

Applications

- WB,IHC,IF,ELISA

MW

- 26kD (Observed)

Isotype

- IgG

Recommended Dilution Ratios

WB 1:500-1:2000

IHC 1:100-1:300

ELISA 1:40000

IF 1:50-200

Storage

Storage* -15°C to -25°C/1 year(Do not lower than -25°C)

Formulation Liquid in PBS containing 50% glycerol, 0.5% BSA and 0.02% sodium azide.

Basic Information

Clonality Polyclonal

Immunogen Information

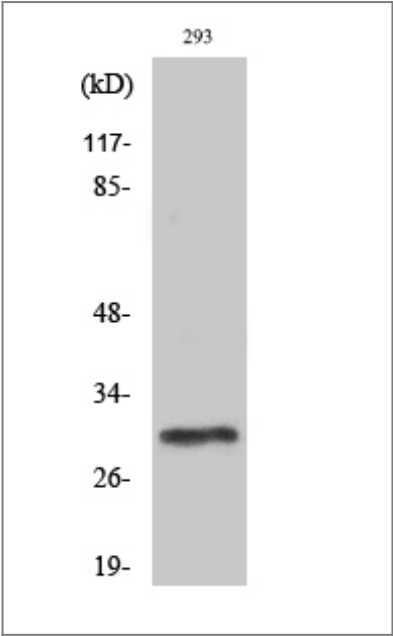
Immunogen The antiserum was produced against synthesized peptide derived from human PIGX. AA range:183-232

Specificity PIG-X Polyclonal Antibody detects endogenous levels of PIG-X protein.

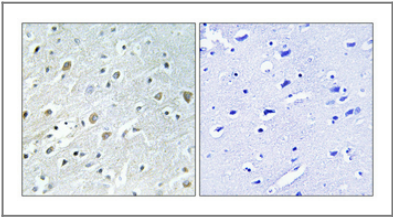
Target Information

Gene name	PIGX		
Protein Name	Phosphatidylinositol-glycan biosynthesis class X protein		
	Organism	Gene ID	UniProt ID
	Human	54965;	Q8TBF5;
	Mouse		Q99LV7;
Cellular Localization	Endoplasmic reticulum membrane ; Single-pass type I membrane protein .		
Tissue specificity	Brain,		
Function	Function:Essential component of glycosylphosphatidylinositol-mannosyltransferase 1 which transfers the first of the 4 mannoses in the GPI-anchor precursors during GPI-anchor biosynthesis. Probably acts by stabilizing the mannosyltransferase PIGM.,pathway:Glycolipid biosynthesis; glycosylphosphatidylinositol-anchor biosynthesis.,PTM:N-glycosylated.,sequence Caution:Unusual initiator. The initiator methionine is coded by a non-canonical CTG leucine codon.,similarity:Belongs to the PIGX family.,subunit:Interacts with PIGM.,		

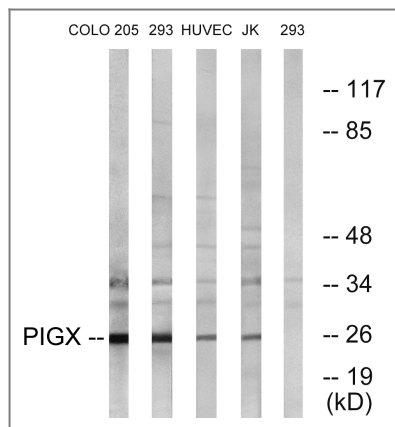
Validation Data



Western Blot analysis of various cells using PIG-X Polyclonal Antibody diluted at 1:1000



Immunohistochemical analysis of paraffin-embedded Human brain. Antibody was diluted at 1:100(4° overnight). High-pressure and temperature Tris-EDTA,pH8.0 was used for antigen retrieval. Negative contrl (right) obtaned from antibody was pre-absorbed by immunogen peptide.



Western blot analysis of lysates from 293, COLO, HUVEC, and Jurkat cells, using PIGX Antibody. The lane on the right is blocked with the synthesized peptide.

Contact information

Orders: order@immunoway.com
 Support: tech@immunoway.com
 Telephone: 877-594-3616 (Toll Free), 408-747-0185
 Website: <http://www.immunoway.com>
 Address: 2200 Ringwood Ave San Jose, CA 95131 USA



Please scan the QR code to access additional product information:
PIG-X Rabbit pAb

For Research Use Only. Not for Use in Diagnostic Procedures.

[Antibody](#) | [ELISA Kits](#) | [Protein](#) | [Reagents](#)