

## PIG3 Rabbit pAb

CatalogNo: YT3723

### Key Features

#### Host Species

- Rabbit

#### Reactivity

- Human

#### Applications

- WB,IHC,IF,ELISA

#### MW

- 36kD (Observed)

#### Isotype

- IgG

### Recommended Dilution Ratios

**WB 1:500-1:2000**

**IHC 1:100-1:300**

**ELISA 1:20000**

**IF 1:50-200**

### Storage

**Storage\*** -15°C to -25°C/1 year(Do not lower than -25°C)

**Formulation** Liquid in PBS containing 50% glycerol, 0.5% BSA and 0.02% sodium azide.

### Basic Information

**Clonality** Polyclonal

### Immunogen Information

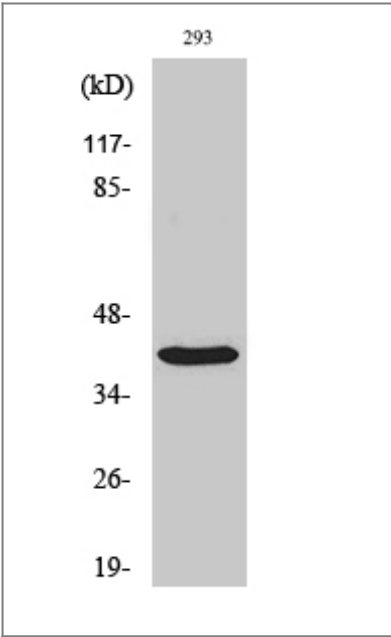
**Immunogen** The antiserum was produced against synthesized peptide derived from human QORX. AA range:241-290

**Specificity** PIG3 Polyclonal Antibody detects endogenous levels of PIG3 protein.

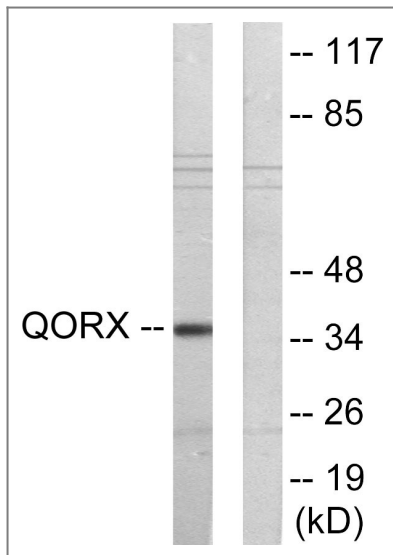
### Target Information

Gene name	TP53I3		
Protein Name	Quinone oxidoreductase PIG3		
	Organism	Gene ID	UniProt ID
	Human	<a href="#">9540</a> ;	<a href="#">Q53FA7</a> ;
Cellular Localization	cytosol,extracellular exosome,		
Tissue specificity	Colon cancer,Gastric mucosa,Lung carcinoma,Mammary tumor,Muscle,		
Function	Alternative products:UV radiation favors the production of isoform 2,Function:May be involved in the generation of reactive oxygen species (ROS).,induction:Isoforms 1 and 2 are both activated by TP53/p53, doxorubicin, etoposide and ionizing radiation. Isoform 2 is highly activated by UV radiation.,similarity:Belongs to the zinc-containing alcohol dehydrogenase family. Quinone oxidoreductase subfamily.,		

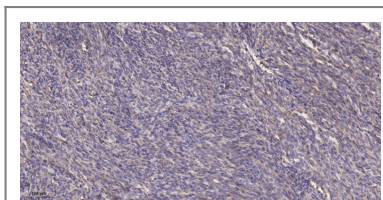
## Validation Data



Western Blot analysis of various cells using PIG3 Polyclonal Antibody



Western blot analysis of lysates from 293 cells, using QORX Antibody. The lane on the right is blocked with the synthesized peptide.



Immunohistochemical analysis of paraffin-embedded human Colon cancer. 1, Antibody was diluted at 1:200(4° overnight). 2, Tris-EDTA,pH9.0 was used for antigen retrieval. 3,Secondary antibody was diluted at 1:200(room temperature, 45min).

## Contact information

Orders: [order@immunoway.com](mailto:order@immunoway.com)  
 Support: [tech@immunoway.com](mailto:tech@immunoway.com)  
 Telephone: 877-594-3616 (Toll Free), 408-747-0185  
 Website: <http://www.immunoway.com>  
 Address: 2200 Ringwood Ave San Jose, CA 95131 USA



Please scan the QR code to access additional product information:  
**PIG3 Rabbit pAb**

For Research Use Only. Not for Use in Diagnostic Procedures.

[Antibody](#) | [ELISA Kits](#) | [Protein](#) | [Reagents](#)