

## Phocein Rabbit pAb

CatalogNo: YT3704

### Key Features

#### Host Species

- Rabbit

#### Reactivity

- Human, Mouse, Rat

#### Applications

- WB, IHC, IF, ELISA

#### MW

- 26kD (Observed)

#### Isotype

- IgG

### Recommended Dilution Ratios

**WB 1:500-1:2000**

**IHC 1:100-1:300**

**IF 1:200-1:1000**

**ELISA 1:20000**

**Not yet tested in other applications.**

### Storage

#### Storage\*

-15°C to -25°C/1 year (Do not lower than -25°C)

#### Formulation

Liquid in PBS containing 50% glycerol, 0.5% BSA and 0.02% sodium azide.

### Basic Information

#### Clonality

Polyclonal

### Immunogen Information

#### Immunogen

The antiserum was produced against synthesized peptide derived from human MOBL3. AA range: 1-50

#### Specificity

Phocein Polyclonal Antibody detects endogenous levels of Phocein protein.

## Target Information

**Gene name** MOB4

**Protein Name** MOB-like protein phocein

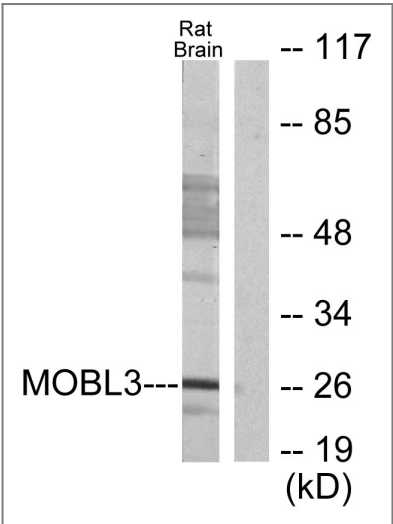
Organism	Gene ID	UniProt ID
Human	<a href="#">25843</a> ;	<a href="#">Q9Y3A3</a> ;
Mouse	<a href="#">19070</a> ;	<a href="#">Q6PEB6</a> ;
Rat	<a href="#">171050</a> ;	<a href="#">Q9QYW3</a> ;

**Cellular Localization** Cytoplasm, perinuclear region . Membrane ; Peripheral membrane protein . Golgi apparatus, Golgi stack membrane ; Peripheral membrane protein . In a perinuclear punctate pattern. Associated with membranes and the Golgi stacks.

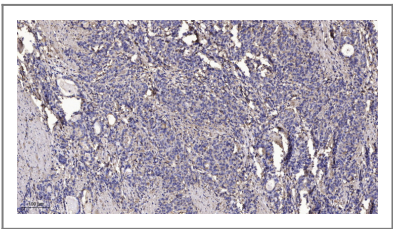
**Tissue specificity** Adrenal gland,Brain,Trachea,Urinary bladder,

**Function** PTM:Phosphorylated on serine residues.,similarity:Belongs to the MOB1/phocein family.,subcellular location:In a perinuclear punctate pattern. Associated with membranes and the Golgi stacks.,subunit:Binds STRN4 (By similarity). Binds STRN and STRN3. Part of a ternary complex containing MOBKL3, STRN and/or STRN3 and PPA2.,

## Validation Data



Western blot analysis of lysates from rat brain cells, using MOBKL3 Antibody. The lane on the right is blocked with the synthesized peptide.



Immunohistochemical analysis of paraffin-embedded human Gastric adenocarcinoma. 1, Antibody was diluted at 1:200(4° overnight). 2, Tris-EDTA,pH9.0 was used for antigen retrieval. 3,Secondary antibody was diluted at 1:200(room temperature, 45min).

## | Contact information

Orders: order@immunoway.com  
Support: tech@immunoway.com  
Telephone: 877-594-3616 (Toll Free), 408-747-0185  
Website: <http://www.immunoway.com>  
Address: 2200 Ringwood Ave San Jose, CA 95131 USA



Please scan the QR code  
to access additional  
product information:  
**Phocein Rabbit pAb**

---

For Research Use Only. Not for Use in Diagnostic Procedures.

[Antibody](#) | [ELISA Kits](#) | [Protein](#) | [Reagents](#)